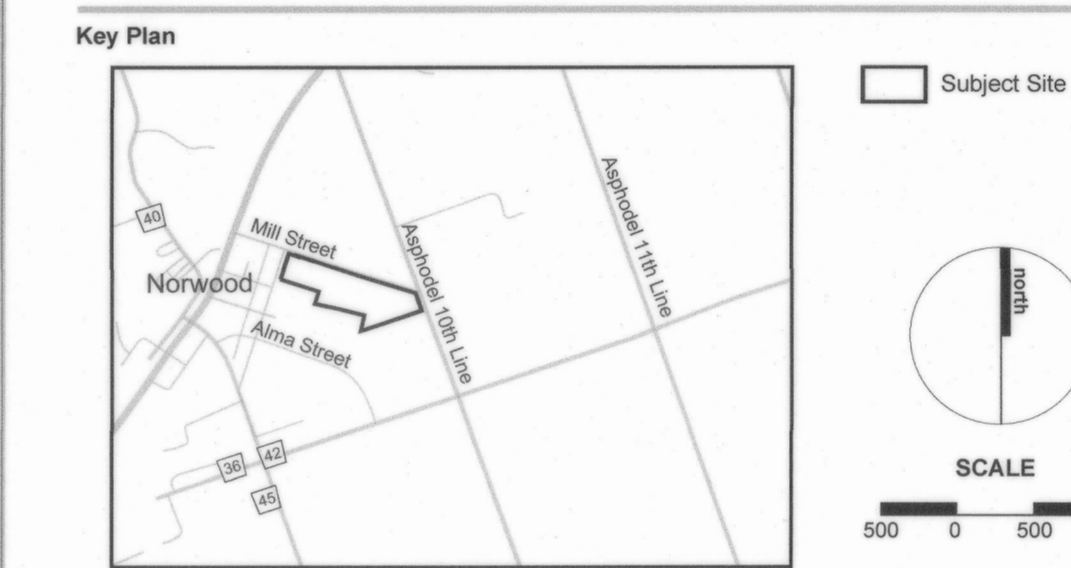


Draft Plan of Subdivision

Legal Description
PART OF LOTS 17 AND 18, CONCESSION 9 AND PART OF LOT J, REGISTERED PLAN 5, TOWNSHIP OF ASPHODEL-NORWOOD, COUNTY OF PETERBOROUGH

Owner's Certificate
I HEREBY AUTHORIZE MACNAUGHTON HERMSEN BRITTON CLARK & ASSOCIATES PLANNING LIMITED TO SUBMIT THIS PLAN FOR APPROVAL.
DATE: April 10, 2024

Surveyor's Certificate
I HEREBY CERTIFY THAT THE BOUNDARIES OF THE LAND TO BE SUBDIVIDED ON THIS PLAN AND THEIR RELATIONSHIP TO THE ADJACENT LANDS ARE ACCURATELY AND CORRECTLY SHOWN.
DATE: APRIL 10, 2024



Notes:
Townhouses are 6.0m deep except at the end and middle of rows where an additional setback of 1.2m has been applied.

Sight triangles are 5m by 5m at local intersections.
Street lengths are as follows:
Street A = 588.19m, Street B = 321.08m, Street C = 132.34m, Street D = 234.92m, Street E = 111.99m

Revision No.	Date	Issued / Revision	By
Additional Information Required Under Section 5(17) of the Planning Act R.S.O. 1990, c P.13 as Amended			
A	As Shown	B	As Shown
C	As Shown	D	As Shown
E	As Shown	F	As Shown
G	As Shown	H	As Shown
I	As Shown	J	As Shown
K	As Shown	L	As Shown

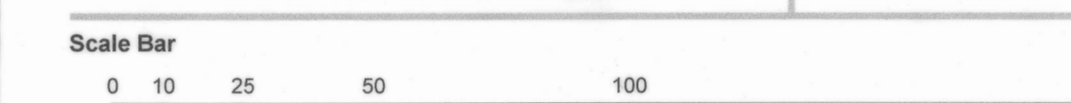
LAND USE SCHEDULE			
LAND USE	LOT/BLOCK	AREA (ha)	UNITS
7.6m SINGLES	BLOCKS 122-126	0.765	31
11.0m SINGLES	LOTS 2-17, 57-69, 76-79 84-85, 90-93, 95-101, 103-104, 106-115, 121	2.072	59
12.2m SINGLES	LOTS 1, 54-55, 80-83 86-89, 116-120	0.598	16
15.24m SINGLES	LOTS 18-53, 70-75, 94, 102, 105	2.370	45
SPECIAL LOT	LOT 56	0.075	1
6.0m TOWNS	BLOCKS 127, 128	0.230	12
LAND SWAP	BLOCK 129	2.895	-
WALKWAY	BLOCKS 130, 131	0.028	-
ROAD WIDENING	BLOCKS 132, 133	0.179	-
DRAINAGE	BLOCKS 134, 135, 136	0.117	-
0.3m RESERVES	BLOCKS 137, 138	0.001	-
SWM	BLOCK 139	1.778	-
ROADS	A-E	2.774	-
TOTAL		13.88	164



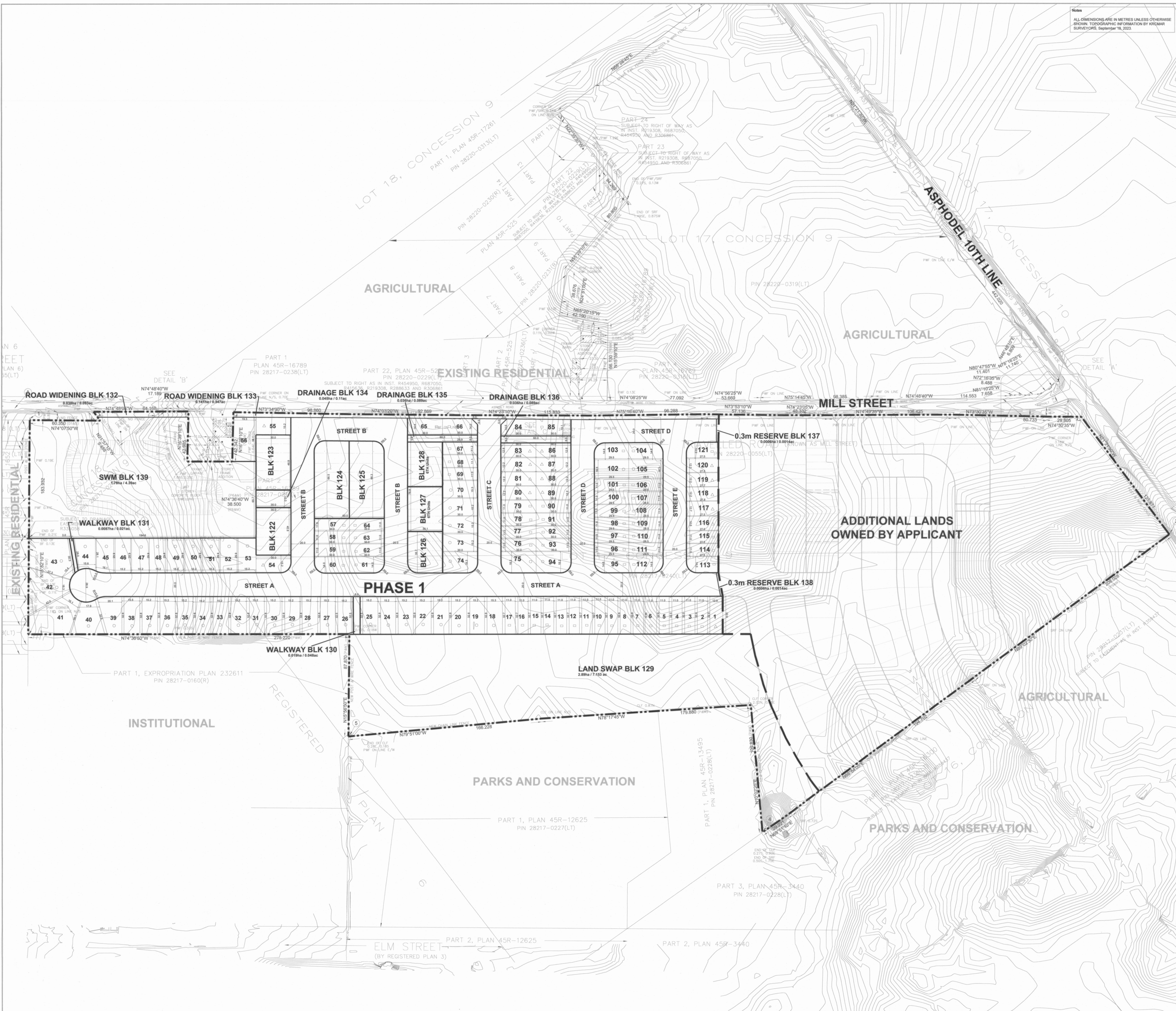
Stamp	Date	April 10, 2024
	File No.	1604D
	Plan Scale	1:1000 (Arch D)
	Drawn By	P.B., Y.Y.
	Checked By	D.M.
	Other	

Project: **Trent Meadows Phase 1**

File Name: **Draft Plan of Subdivision** Dwg No. **1 of 1**



MEASUREMENTS SHOWN ON THIS PLAN ARE IN METRES AND CAN BE CONVERTED TO FEET BY DIVIDING BY 0.3048
N11604D - Crowley Farms, Norwood - Tech Production/CAD



SEE DETAIL 'B'
SEE DETAIL 'A'

REGISTERED PLAN 3
REGISTERED PLAN 4
REGISTERED PLAN 5
REGISTERED PLAN 6