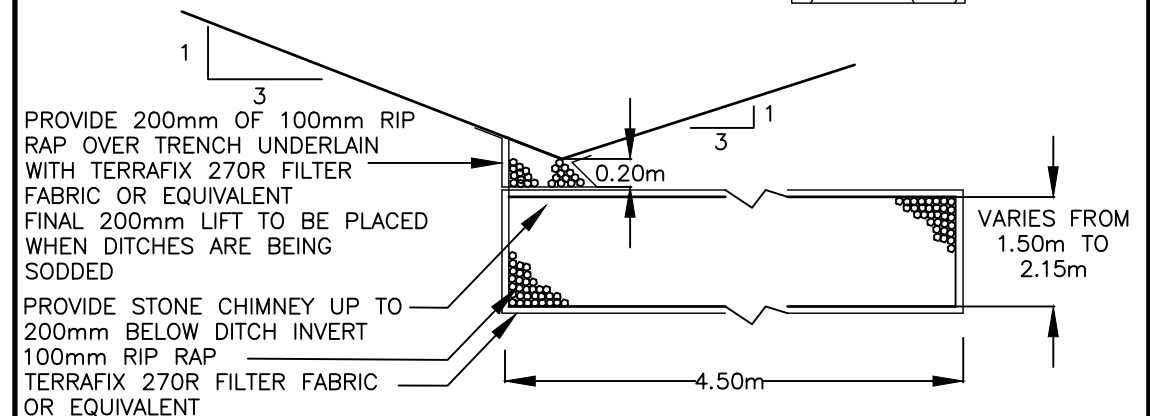
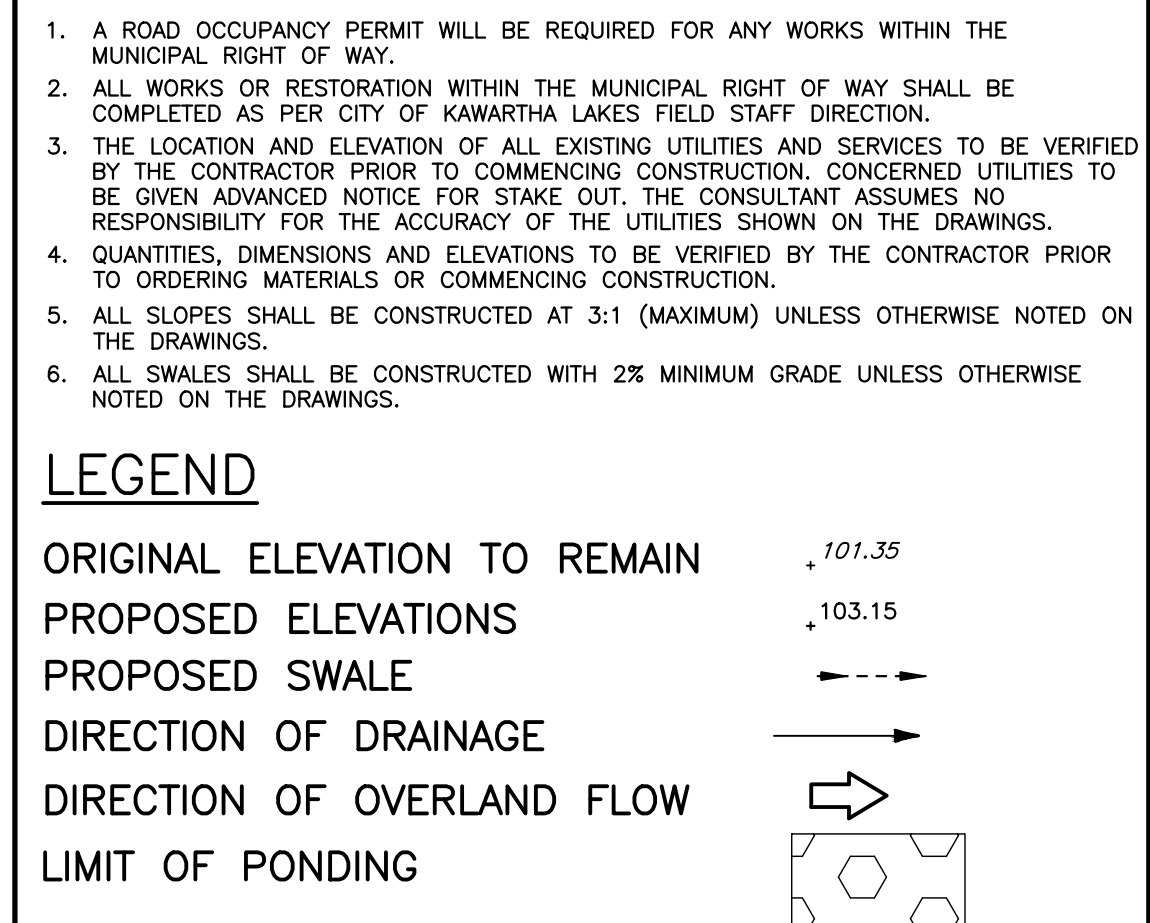


BENCH MARK
BENCHMARKS SHOWN HEREON ARE GEODETIC IN ORIGIN DERIVED FROM CVD2013 BENCHMARK No. 6033306, IRON PIPE WITH BRASS CAP ON TOP OF SAND CUT ON COUNTY ROAD 36, 76 CM SOUTHEAST OF WIRE FENCE ALONG NORTHWEST LIMIT OF RIGHT-OF-WAY, AS SHOWN ON A TOPOGRAPHIC SURVEY BY A PRIVATE OLS, DATED 20231217. ELEV = 277.33.

SITE GRADING NOTES

1. A ROAD OCCUPANCY PERMIT WILL BE REQUIRED FOR ANY WORKS WITHIN THE MUNICIPAL RIGHT OF WAY.
2. ALL WORKS OR RESTORATION WITHIN THE MUNICIPAL RIGHT OF WAY SHALL BE COMPLETED AS PER CITY OF KAWARTHA LAKES FIELD STAFF DIRECTION.
3. THE LOCATION AND ELEVATION OF ALL EXISTING UTILITIES AND SERVICES TO BE VERIFIED BY THE CONTRACTOR PRIOR TO COMMENCING CONSTRUCTION. CONCERNED UTILITIES TO BE GIVEN ADVANCED NOTICE FOR STAKE OUT. THE CONSULTANT ASSUMES NO RESPONSIBILITY FOR THE ACCURACY OF THE UTILITIES SHOWN ON THE DRAWINGS.
4. QUANTITIES, DIMENSIONS AND ELEVATIONS TO BE VERIFIED BY THE CONTRACTOR PRIOR TO ORDERING MATERIALS OR COMMENCING CONSTRUCTION.
5. ALL SLOPES SHALL BE CONSTRUCTED AT 3:1 (MAXIMUM) UNLESS OTHERWISE NOTED ON THE DRAWINGS.
6. ALL SWALES SHALL BE CONSTRUCTED WITH 2% MINIMUM GRADE UNLESS OTHERWISE NOTED ON THE DRAWINGS.



TYPICAL INFILTRATION GALLERY DETAIL
SCALE: NOT TO SCALE

NO.	DATE	REVISION	BY
2	20241216	REVISED AS PER CONSERVATION AUTHORITY COMMENTS	C.J.
1	20241203	REVISED AS PER MUNICIPAL COMMENTS	B.A.

APPROVED		APPROVED	
DIRECTOR, ENGINEERING SERVICES MUNICIPALITY OF TRENT LAKES		DIRECTOR, ENGINEERING SERVICES REGION OF BOBCAYGEON	
DATE		DATE	

TRENT LAKES
ENGINEERING SERVICES DEPARTMENT

JEFFERY SUBDIVISION
BOBCAYGEON

CONCEPTUAL GRADING AND SERVICING PLAN

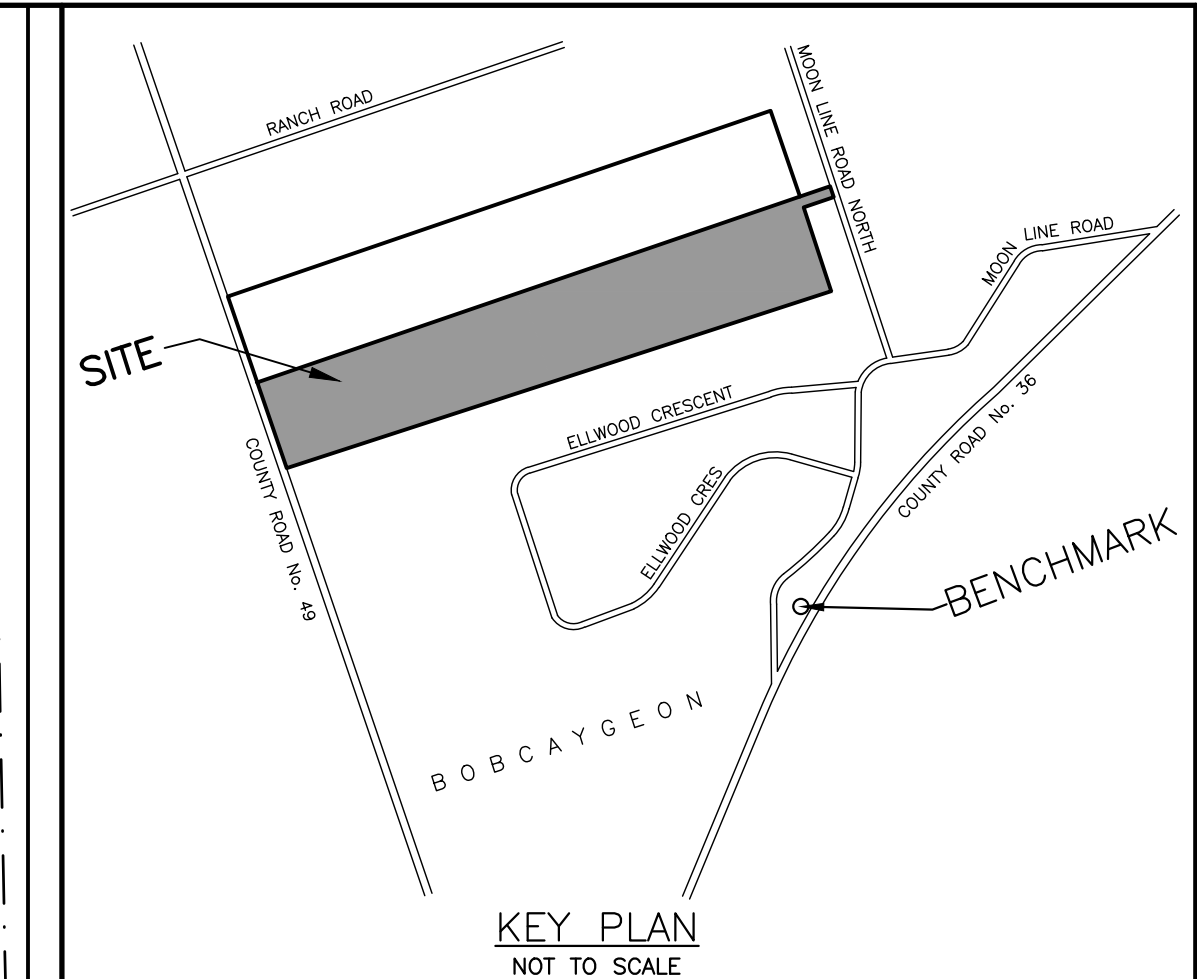
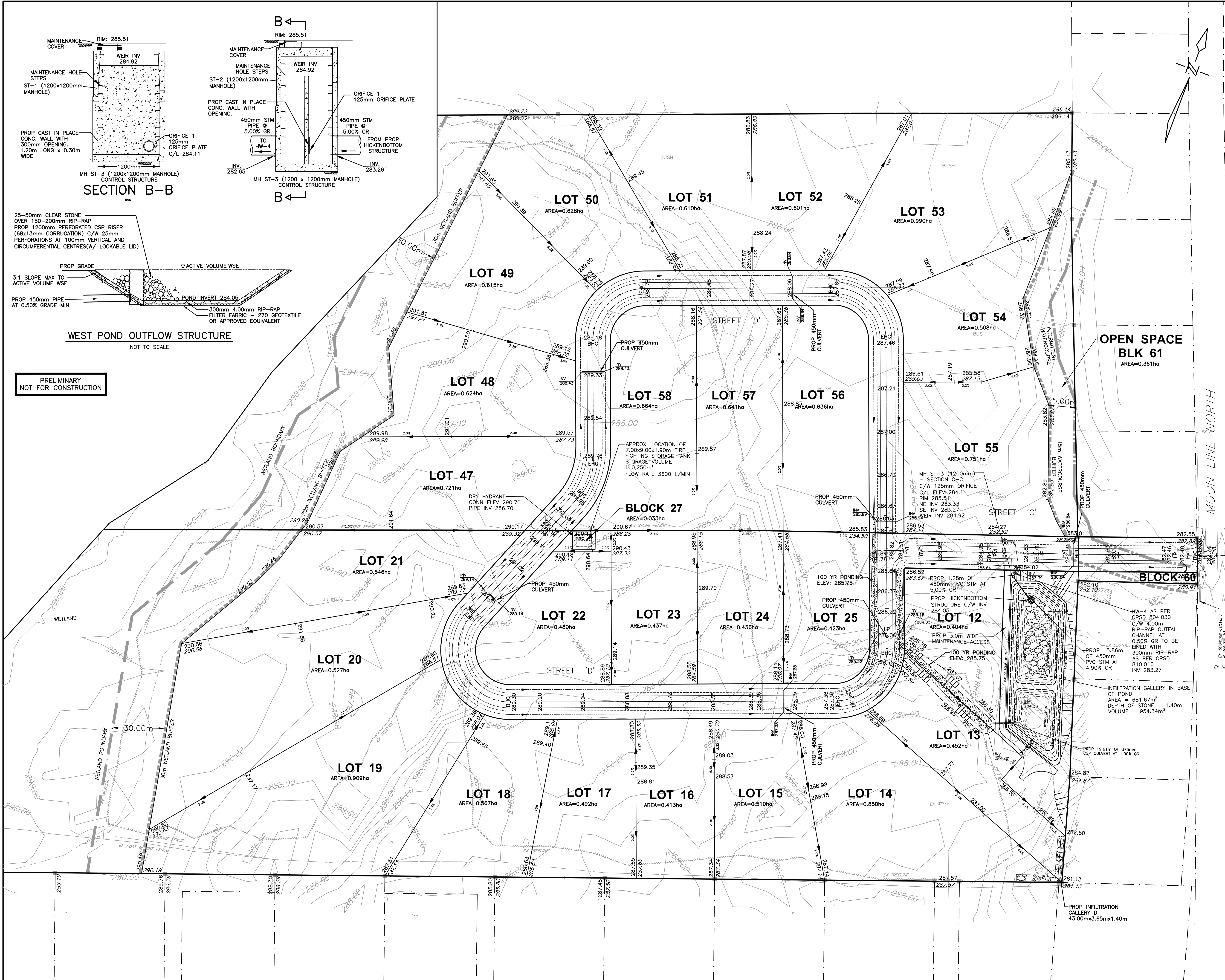
D.G. BIDDLE & ASSOCIATES
CONSULTING ENGINEERS & PLANNERS

96 King Street East
Oshawa, Ontario, L1H 1B6

Phone: 905-576-8500

info@dgbiddle.com
dgbiddle.com

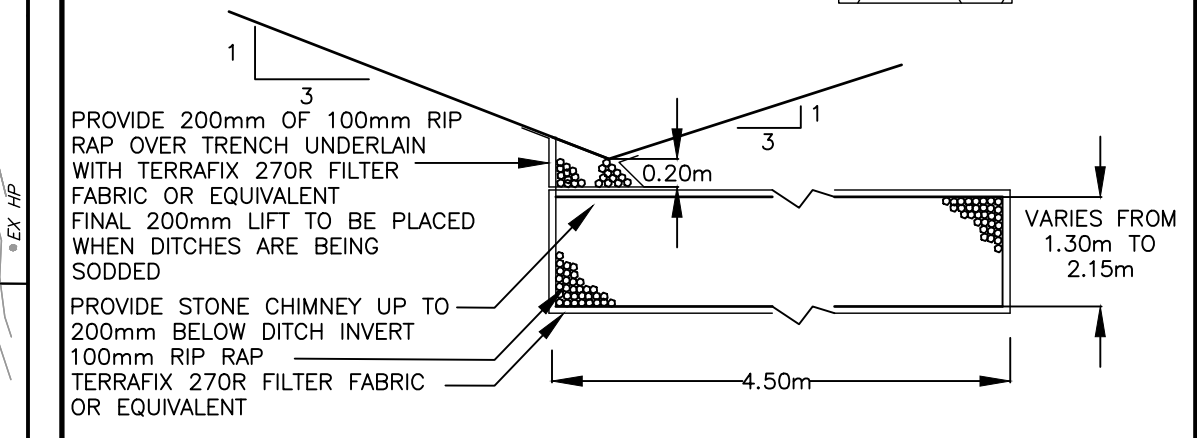
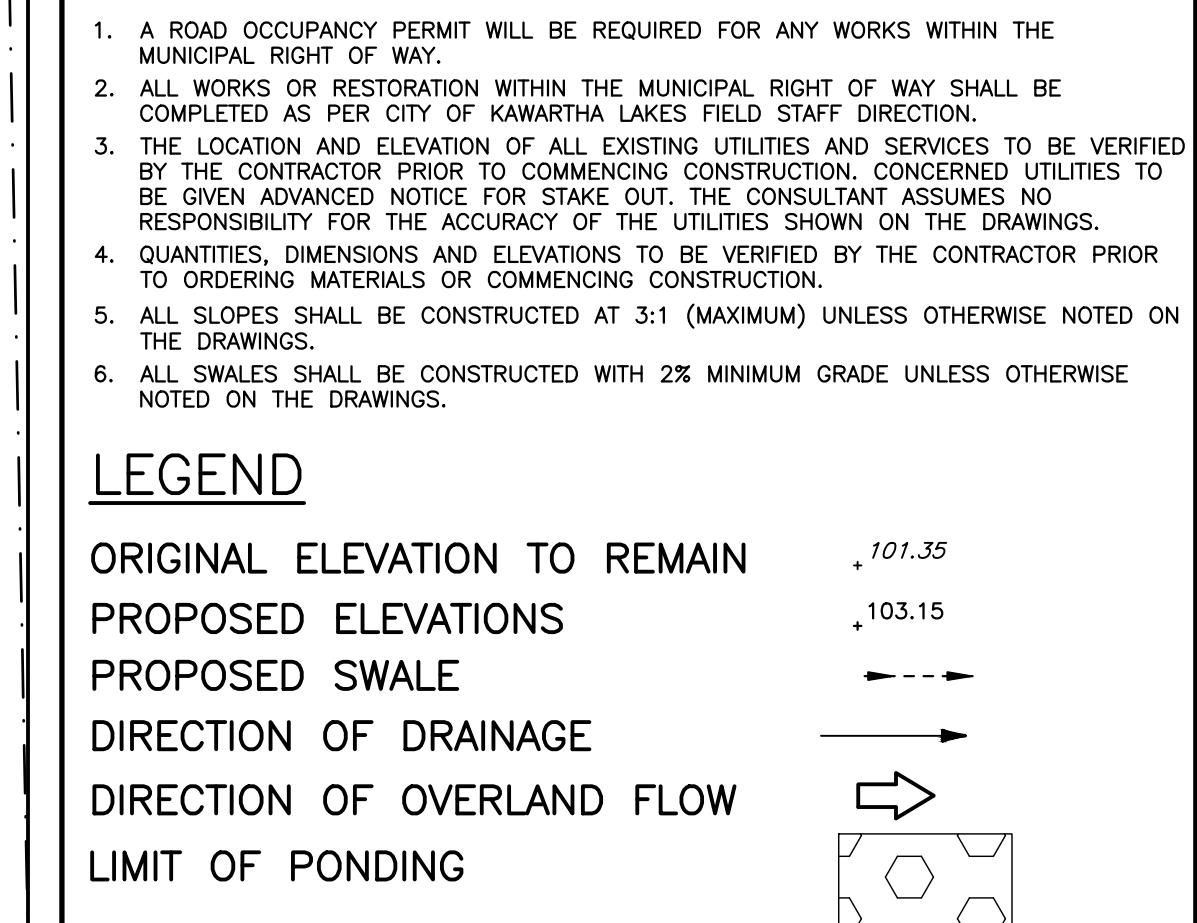
SCALE: 1:1000	PROJECT NO. 122169
DRAWN BY: M.J.H.	DRAWING NO. LG-1
DESIGN BY: M.J.H.	
CHECKED BY: D.D.M.	
DATE: JAN 2024	



BENCH MARK
BENCHMARKS SHOWN HEREON ARE GEODETIC IN ORIGIN DERIVED FROM CGVD2013 BENCHMARK No. 603306, IRON PIPE WITH BRASS CAP ON TOP OF SAND CUT ON COUNTY ROAD 36, 76 CM SOUTHEAST OF WIRE FENCE ALONG NORTHWEST LIMIT OF RIGHT-OF-WAY, AS SHOWN ON A TOPOGRAPHIC SURVEY BY A PRIVATE OLS, DATED 20231217. ELEV = 277.33.

SITE GRADING NOTES

1. A ROAD OCCUPANCY PERMIT WILL BE REQUIRED FOR ANY WORKS WITHIN THE MUNICIPAL RIGHT OF WAY.
2. ALL WORKS OR RESTORATION WITHIN THE MUNICIPAL RIGHT OF WAY SHALL BE COMPLETED AS PER CITY OF KAWARTHA LAKES FIELD STAFF DIRECTION.
3. THE LOCATION AND ELEVATION OF ALL EXISTING UTILITIES AND SERVICES TO BE VERIFIED BY THE CONTRACTOR PRIOR TO COMMENCING CONSTRUCTION. CONCERNED UTILITIES TO BE GIVEN ADVANCED NOTICE FOR STAKE OUT. THE CONSULTANT ASSUMES NO RESPONSIBILITY FOR THE ACCURACY OF THE UTILITIES SHOWN ON THE DRAWINGS.
4. QUANTITIES, DIMENSIONS AND ELEVATIONS TO BE VERIFIED BY THE CONTRACTOR PRIOR TO ORDERING MATERIALS OR COMMENCING CONSTRUCTION.
5. ALL SLOPES SHALL BE CONSTRUCTED AT 3:1 (MAXIMUM) UNLESS OTHERWISE NOTED ON THE DRAWINGS.
6. ALL SWALES SHALL BE CONSTRUCTED WITH 2% MINIMUM GRADE UNLESS OTHERWISE NOTED ON THE DRAWINGS.



REVISIONS			
NO.	DATE	REVISION	BY
1	20241216	REVISED AS PER CONSERVATION AUTHORITY COMMENTS	C.J.
2	20241203	REVISED AS PER MUNICIPAL COMMENTS	B.A.

APPROVED		APPROVED	
DIRECTOR, ENGINEERING SERVICES MUNICIPALITY OF		DIRECTOR, ENGINEERING SERVICES REGION OF	
DATE		DATE	

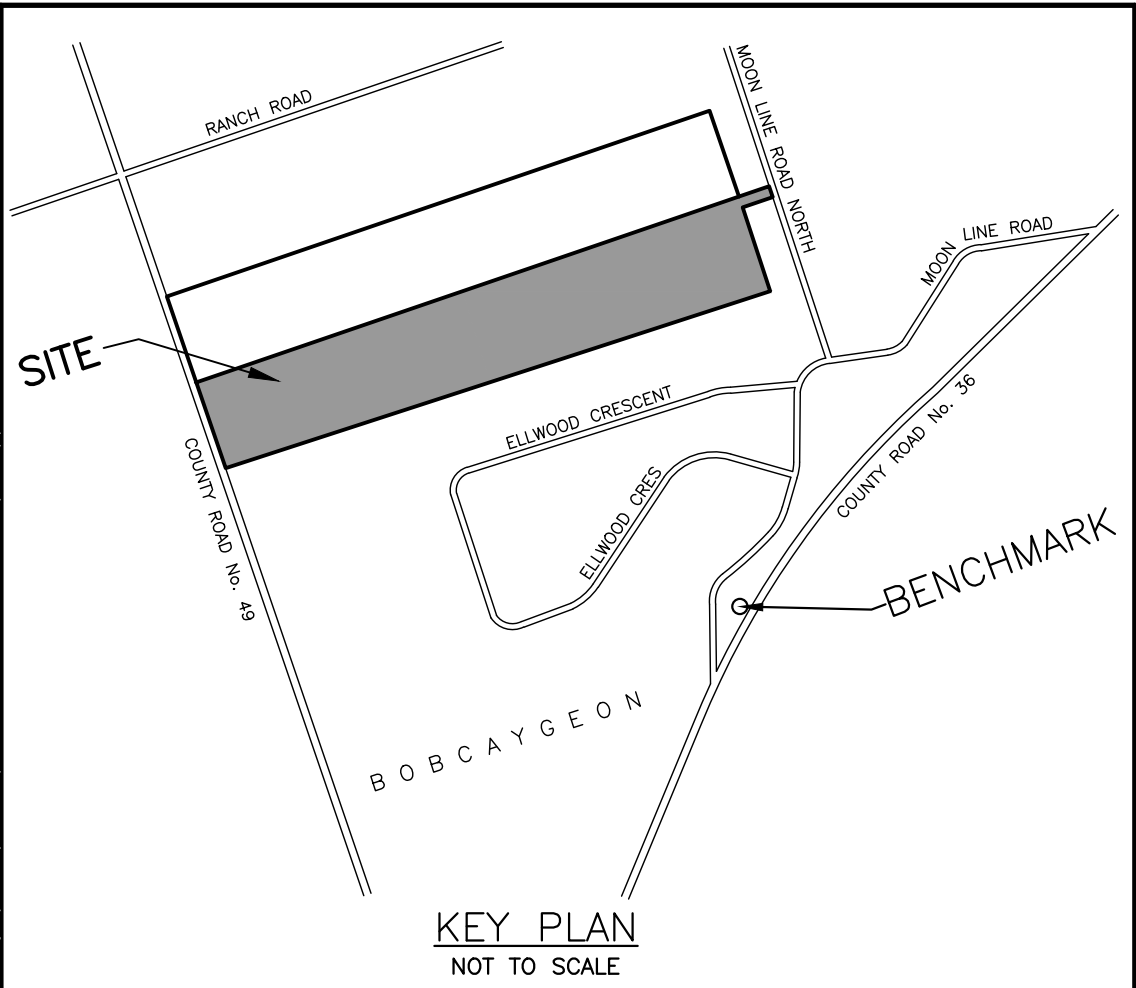
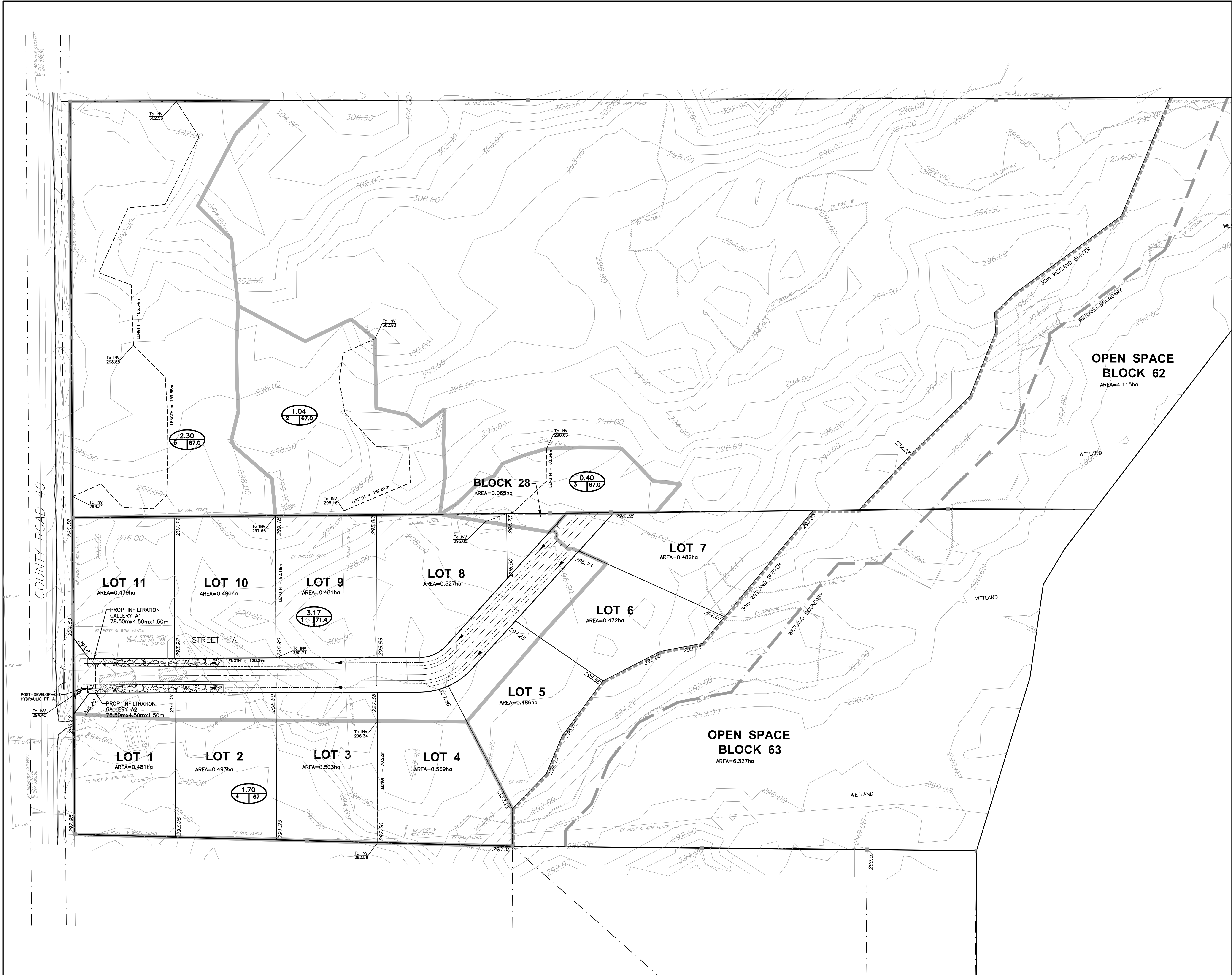
TRENT LAKES
ENGINEERING SERVICES DEPARTMENT
JEFFERY SUBDIVISION
BOBCAYGEON

CONCEPTUAL GRADING AND SERVICING PLAN

D.G. BIDDLE & ASSOCIATES
CONSULTING ENGINEERS & PLANNERS

96 King Street East
Oshawa, Ontario, L1H 1B6
Phone: 905-576-8500
info@dgibiddle.com
dgibiddle.com

	SCALE: 1:1000	PROJECT NO. 122169
	DRAWN BY: M.J.H.	DRAWING NO. LG-2
	DESIGN BY: M.J.H.	
	CHECKED BY: D.D.M.	
DATE: JAN 2024		



BENCH MARK
BENCHMARKS SHOWN HEREON ARE GEODETIC IN ORIGIN DERIVED FROM CSD2013 BENCHMARK No. 60U3306, IRON PIPE WITH BRASS CAP ON TOP OF SAND CUT ON COUNTY ROAD 36, 76 CM SOUTHEAST OF WIRE FENCE ALONG NORTHWEST LIMIT OF RIGHT-OF-WAY, AS SHOWN ON A TOPOGRAPHIC SURVEY BY A PRIVATE OLS, DATED 20231217. ELEV = 277.33.

LEGEND

- DRAINAGE BOUNDARY
- DRAINAGE AREA
- ID/CURVE NUMBER
- OVERLAND FLOW DIRECTION
- WETLAND BOUNDARY
- 30m WETLAND BOUNDARY OFFSET

NOTE: THIS PLAN IS FOR STORM DRAINAGE AREAS ONLY

PRELIMINARY
NOT FOR CONSTRUCTION

NO.	DATE	REVISION	BY
1	20241216	REVISED AS PER CONSERVATION AUTHORITY COMMENTS	C.J.

APPROVED	APPROVED
DIRECTOR, ENGINEERING SERVICES MUNICIPALITY OF	DIRECTOR, ENGINEERING SERVICES REGION OF
DATE	DATE

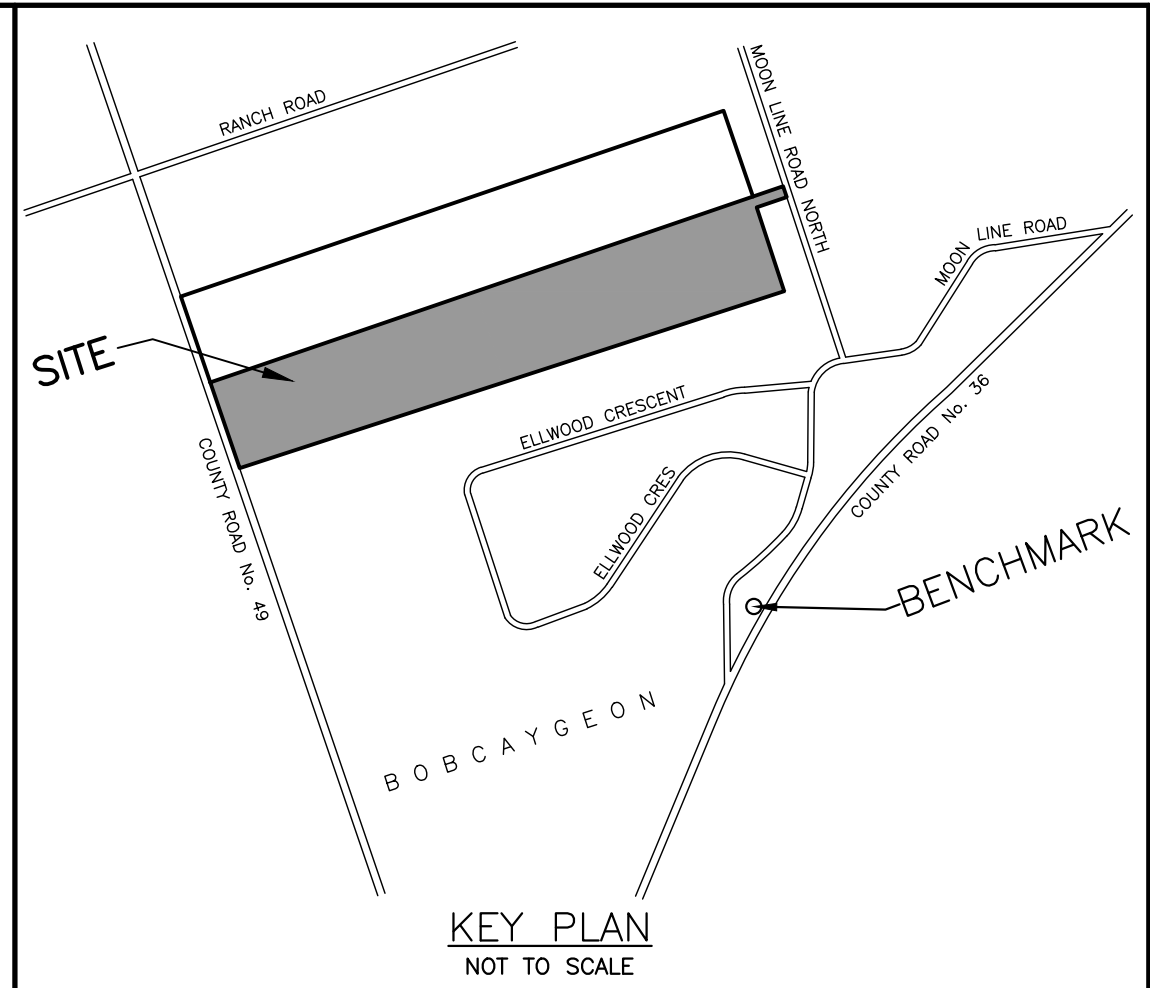
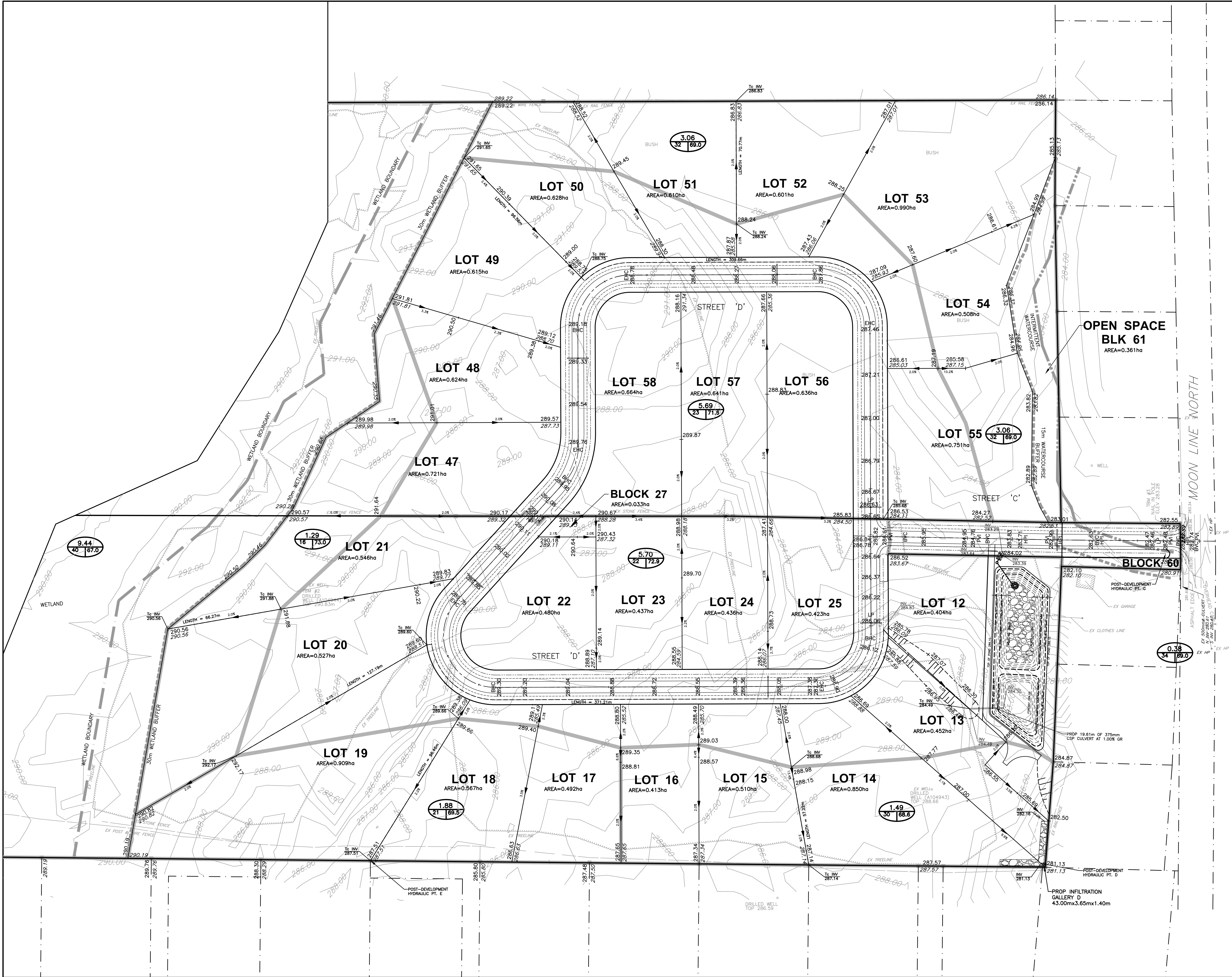
TRENT LAKES
ENGINEERING SERVICES DEPARTMENT
JEFFERY SUBDIVISION
BOBCAYGEON

POST-DEVELOPMENT STORM DRAINAGE PLAN (INTERIM CONDITION)

D.G. BIDDLE & ASSOCIATES
CONSULTING ENGINEERS & PLANNERS

96 King Street East
Oshawa, Ontario, L1H 1B6
Phone: 905-576-8500
info@dgbiddle.com
dgbiddle.com

	SCALE: 1:1000	PROJECT NO. 122169
	DRAWN BY: M.J.H.	DRAWING NO. SD-5
	DESIGN BY: M.J.H.	
	CHECKED BY: D.D.M.	
	DATE: JAN 2024	



BENCH MARK
BENCHMARKS SHOWN HEREON ARE GEODETIC IN ORIGIN DERIVED FROM CGVD2013 BENCHMARK No. 60U3306, IRON PIPE WITH BRASS CAP ON TOP OF SAND CUT ON COUNTY ROAD 36, 76 CM SOUTHEAST OF WIRE FENCE ALONG NORTHWEST LIMIT OF RIGHT-OF-WAY, AS SHOWN ON A TOPOGRAPHIC SURVEY BY A PRIVATE OLS, DATED 20231217. ELEV = 277.33.

- LEGEND**
- DRAINAGE BOUNDARY
 - DRAINAGE AREA ID/CURVE NUMBER
 - OVERLAND FLOW DIRECTION
 - WETLAND BOUNDARY
 - 30m WETLAND BOUNDARY OFFSET
 - INTERMITTENT WATERCOURSE
 - 15m WATERCOURSE BUFFER

NOTE: THIS PLAN IS FOR STORM DRAINAGE AREAS ONLY

PRELIMINARY NOT FOR CONSTRUCTION			
1	20241216	REVISED AS PER CONSERVATION AUTHORITY COMMENTS	C.J.
NO.	DATE	REVISION	BY

APPROVED	APPROVED
DIRECTOR, ENGINEERING SERVICES MUNICIPALITY OF	DIRECTOR, ENGINEERING SERVICES REGION OF
DATE	DATE

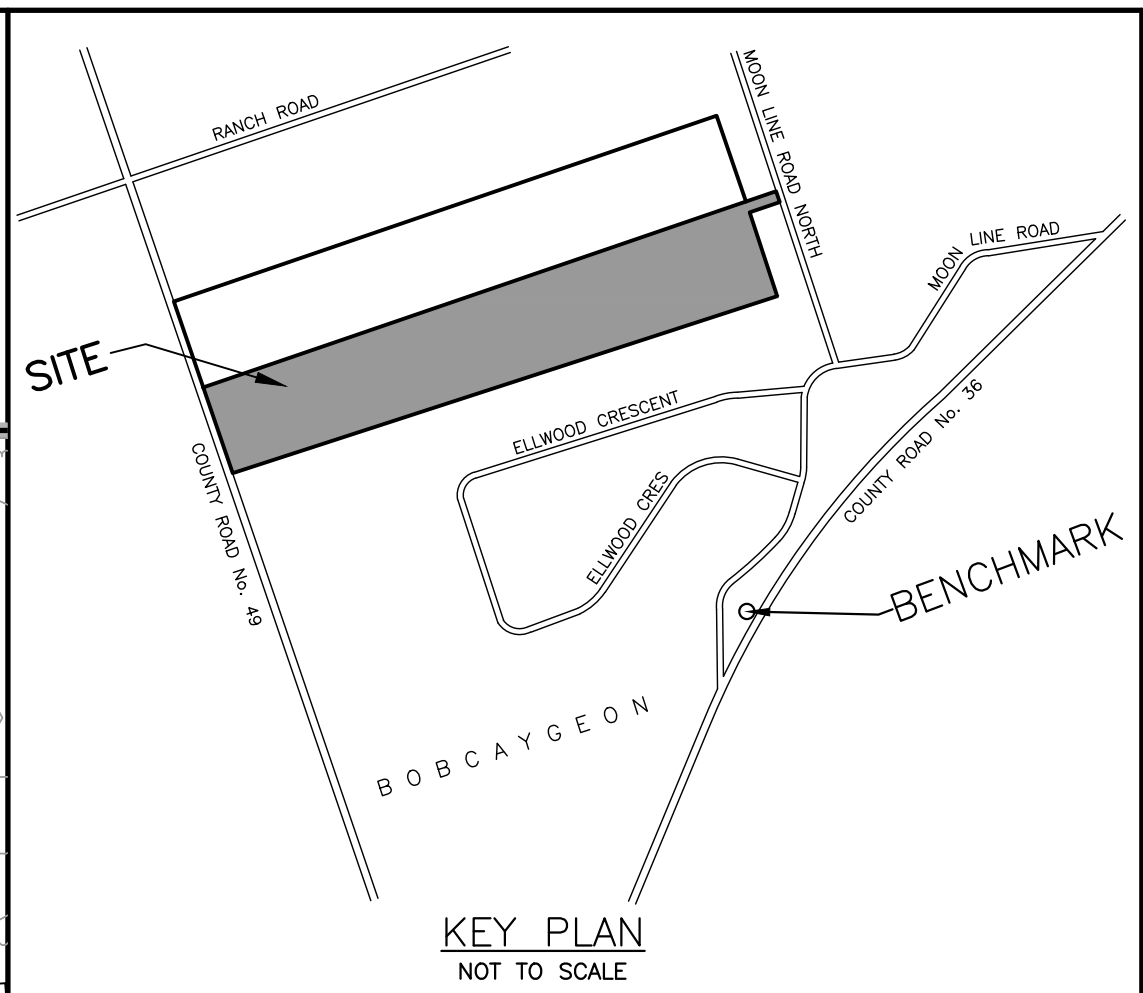
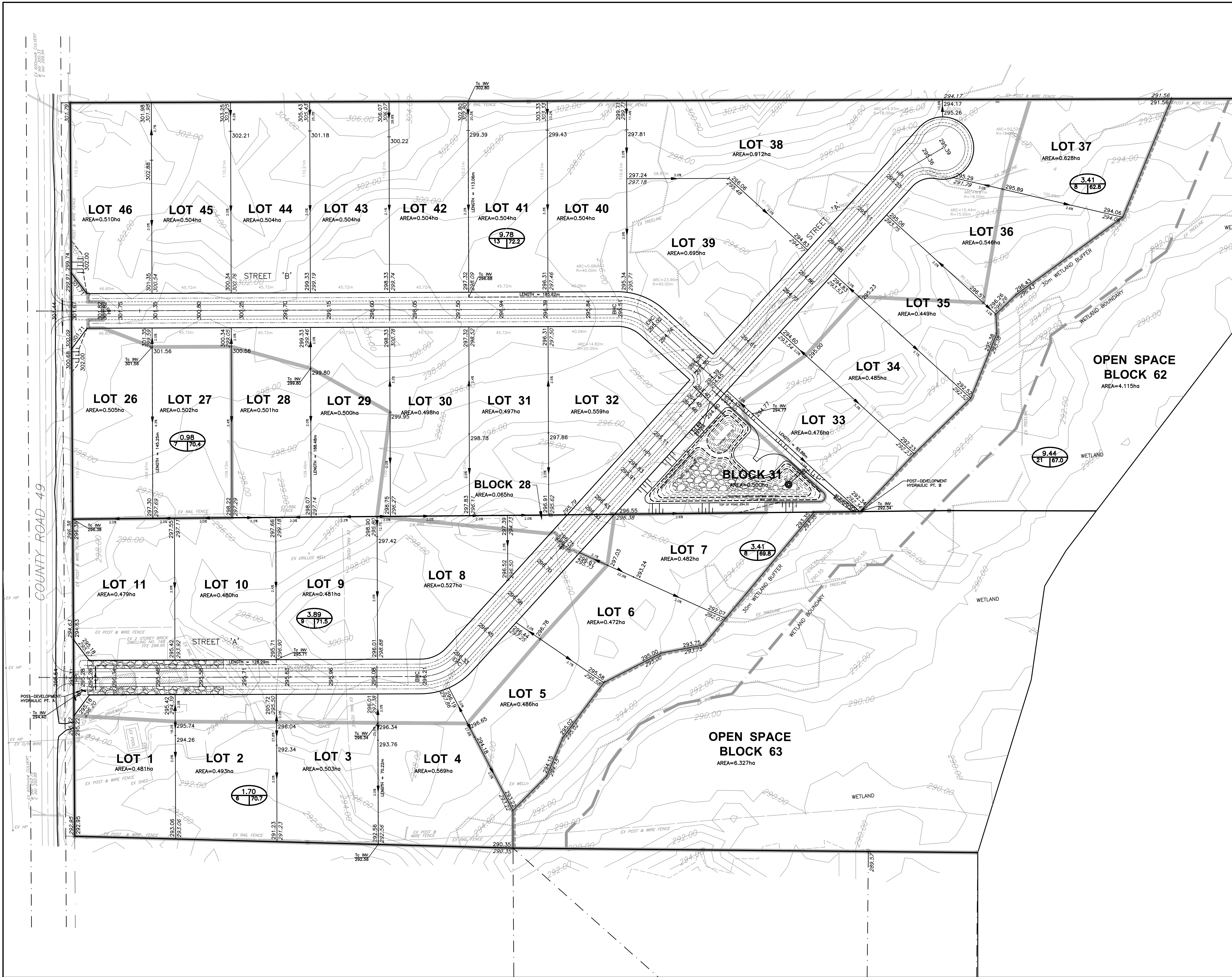
TRENT LAKES
ENGINEERING SERVICES DEPARTMENT
JEFFERY SUBDIVISION
BOBCAYGEON

POST-DEVELOPMENT STORM DRAINAGE PLAN

D.G. BIDDLE & ASSOCIATES
CONSULTING ENGINEERS & PLANNERS

96 King Street East
Oshawa, Ontario, L1H 1B6
Phone: 905-576-8500
info@dgbidle.com
dgbidle.com

	SCALE: 1:1000	PROJECT NO. 122169
	DRAWN BY: M.J.H.	DRAWING NO.
	DESIGN BY: M.J.H.	SD-4
	CHECKED BY: D.D.M.	
DATE: JAN 2024		



BENCH MARK
BENCHMARKS SHOWN HEREON ARE GEODETIC IN ORIGIN DERIVED FROM CND2013 BENCHMARK No. 60U3306, IRON PIPE WITH BRASS CAP ON TOP OF SAND CUT ON COUNTY ROAD 36, 76 CM SOUTHEAST OF WIRE FENCE ALONG NORTHWEST LIMIT OF RIGHT-OF-WAY, AS SHOWN ON A TOPOGRAPHIC SURVEY BY A PRIVATE OLS, DATED 20231217. ELEV = 277.33.

LEGEND

- DRAINAGE BOUNDARY
- DRAINAGE AREA
- ID/CURVE NUMBER
- OVERLAND FLOW DIRECTION
- WETLAND BOUNDARY
- 30m WETLAND BOUNDARY OFFSET

NOTE: THIS PLAN IS FOR STORM DRAINAGE AREAS ONLY

PRELIMINARY NOT FOR CONSTRUCTION

NO.	DATE	REVISION	BY
1	20241216	REVISED AS PER CONSERVATION AUTHORITY COMMENTS	C.J.

APPROVED		APPROVED	
DIRECTOR, ENGINEERING SERVICES MUNICIPALITY OF		DIRECTOR, ENGINEERING SERVICES REGION OF	
DATE:		DATE:	

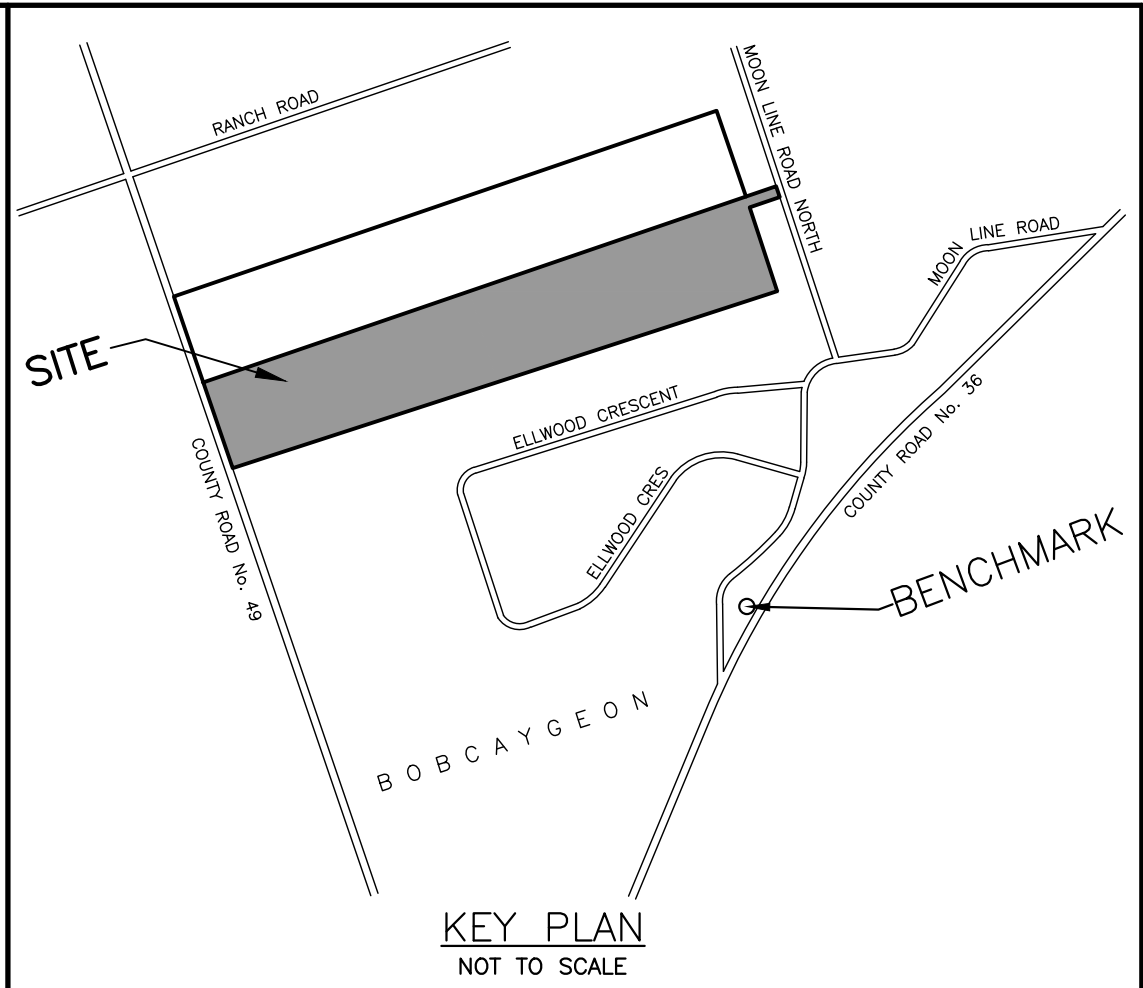
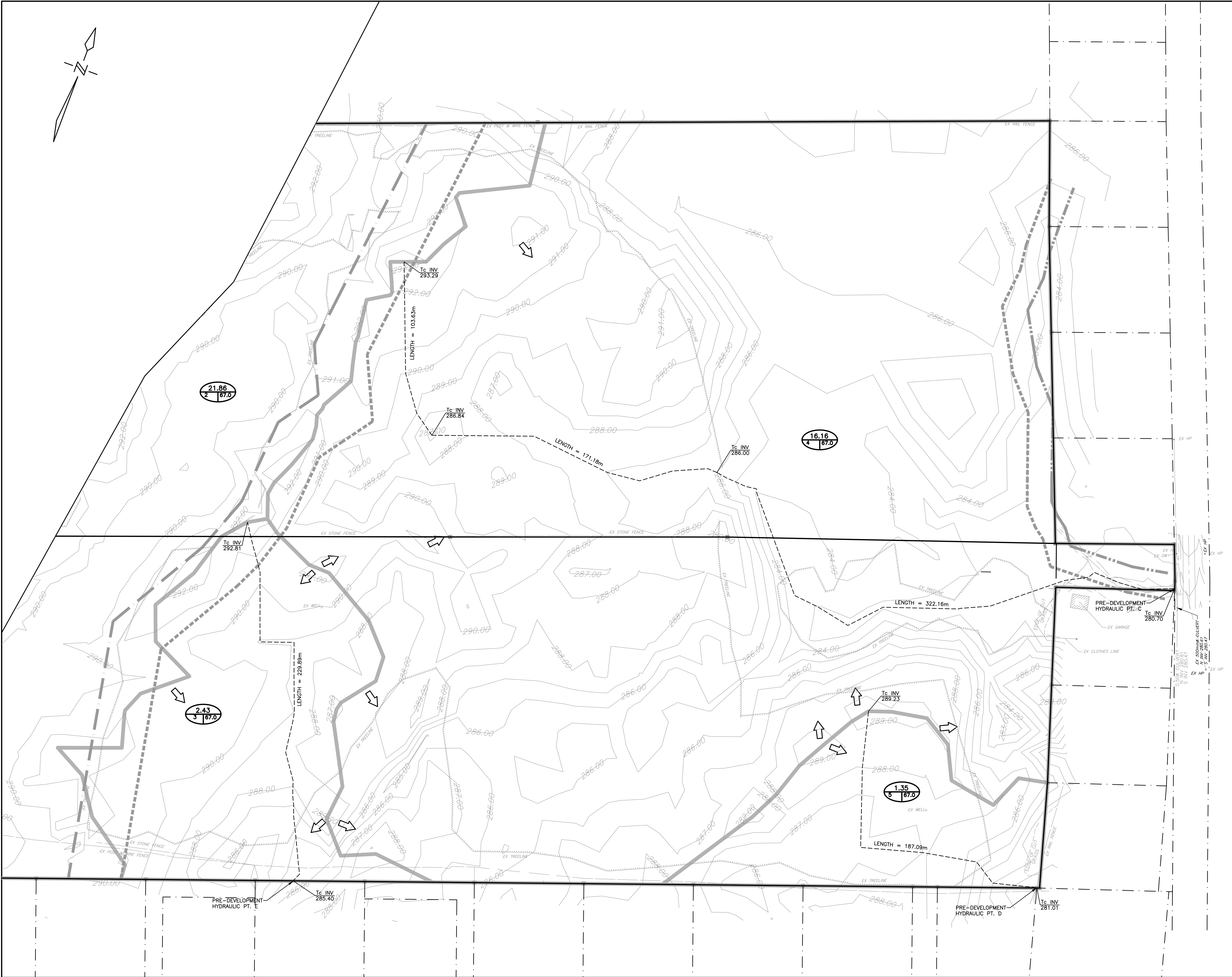
TRENT LAKES
ENGINEERING SERVICES DEPARTMENT
JEFFERY SUBDIVISION
BOBCAYGEON

POST-DEVELOPMENT STORM DRAINAGE PLAN

D.G. BIDDLE & ASSOCIATES
CONSULTING ENGINEERS & PLANNERS
96 King Street East
Oshawa, Ontario, L1H 1B6
Phone: 905-576-8500
info@dgbiddle.com
dgbiddle.com

LICENSED PROFESSIONAL ENGINEER
D. D. J. MCNAUL
100174891
DEC 20, '24
PROVINCE OF ONTARIO

SCALE:	1:1000	PROJECT NO.	122169
DRAWN BY:	M.J.H.	DRAWING NO.	SD-3
DESIGN BY:	M.J.H.		
CHECKED BY:	D.D.M.		
DATE:	JAN 2024		



BENCH MARK
BENCHMARKS SHOWN HEREON ARE GEODETIC IN ORIGIN DERIVED FROM CGVD2013 BENCHMARK No. 60U3306, IRON PIPE WITH BRASS CAP ON TOP OF SAND CUT ON COUNTY ROAD 36, 76 CM SOUTHEAST OF WIRE FENCE ALONG NORTHWEST LIMIT OF RIGHT-OF-WAY, AS SHOWN ON A TOPOGRAPHIC SURVEY BY A PRIVATE OLS, DATED 20231217. ELEV = 277.33.

- ### LEGEND
- DRAINAGE BOUNDARY
 - DRAINAGE AREA ID/CURVE NUMBER
 - OVERLAND FLOW DIRECTION
 - WETLAND BOUNDARY
 - 30m WETLAND BOUNDARY OFFSET
 - INTERMITTENT WATERCOURSE
 - 15m WATERCOURSE BUFFER

NOTE: THIS PLAN IS FOR STORM DRAINAGE AREAS ONLY

PRELIMINARY
NOT FOR CONSTRUCTION

1	20241216	REVISED AS PER CONSERVATION AUTHORITY COMMENTS	C.J.
NO.	DATE	REVISION	BY

APPROVED	APPROVED
DIRECTOR, ENGINEERING SERVICES MUNICIPALITY OF	DIRECTOR, ENGINEERING SERVICES REGION OF
DATE	DATE

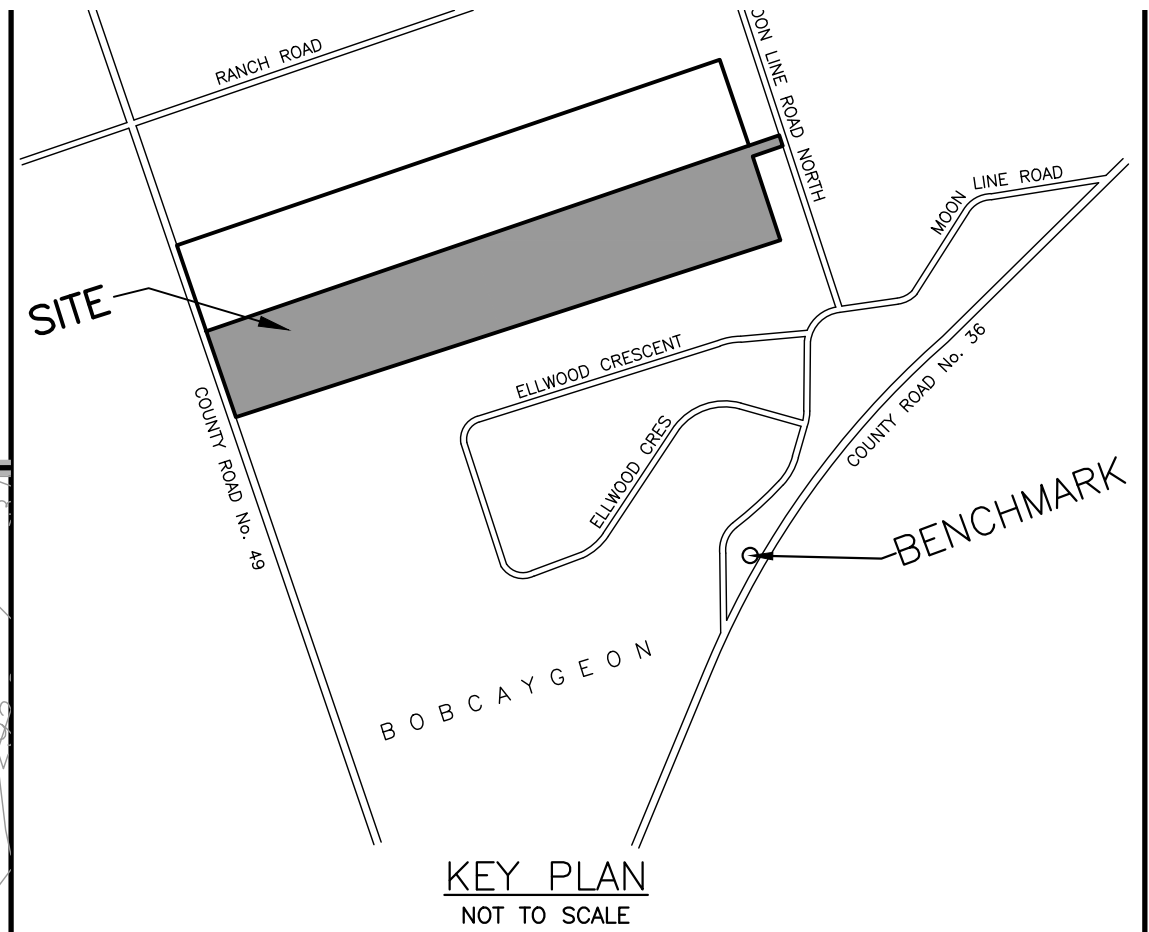
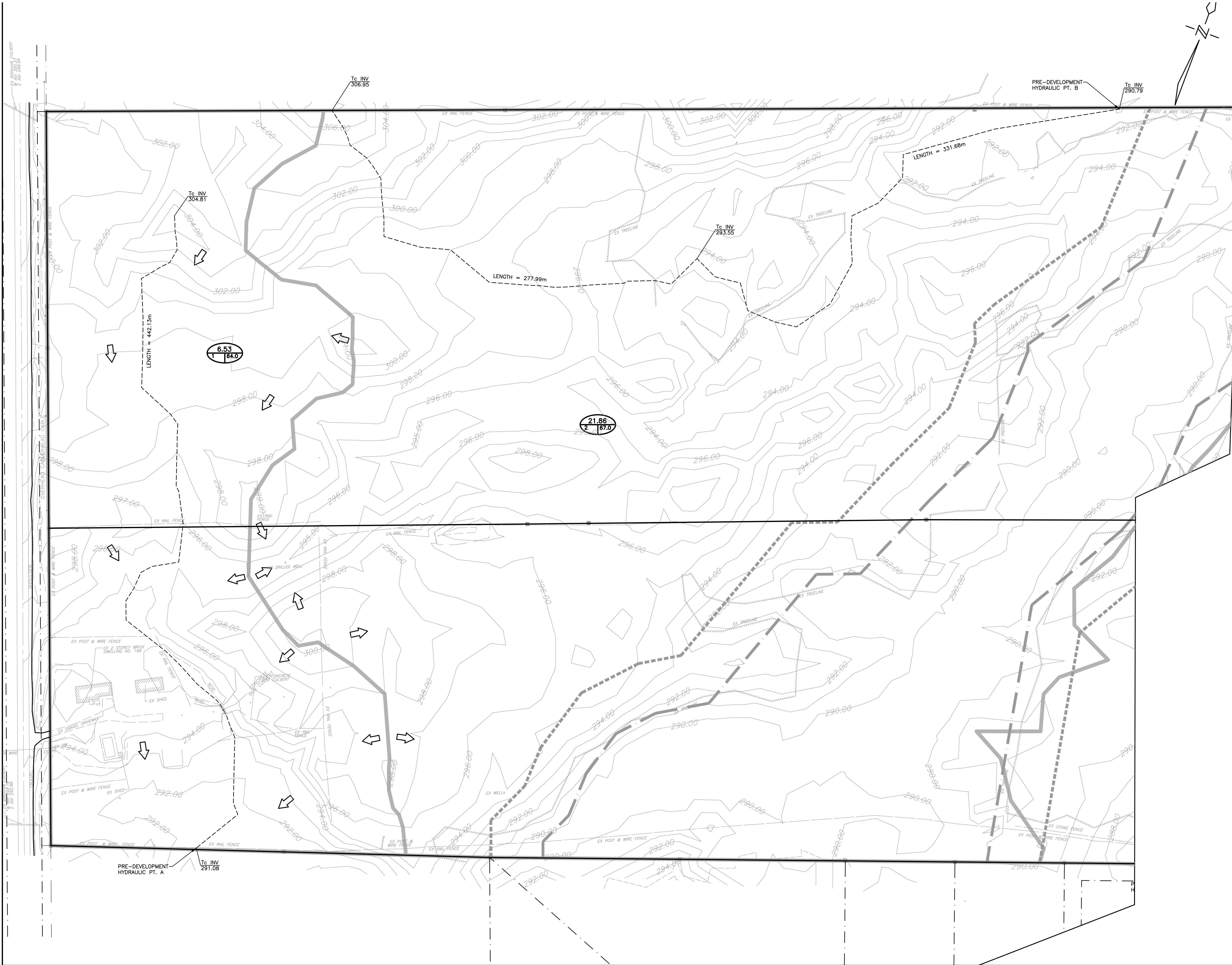
TRENT LAKES
ENGINEERING SERVICES DEPARTMENT
JEFFERY SUBDIVISION
BOBCAYGEON

PRE-DEVELOPMENT STORM
DRAINAGE PLAN – EAST

D.G. BIDDLE & ASSOCIATES
CONSULTING ENGINEERS & PLANNERS

96 King Street East
Oshawa, Ontario, L1H 1B6
Phone: 905-576-8500
info@dgbiddle.com
dgbiddle.com

	SCALE: 1:1000	PROJECT NO. 122169
	DRAWN BY: M.J.H.	DRAWING NO. SD-2
	DESIGN BY: M.J.H.	
	CHECKED BY: D.D.M.	
	DATE: JAN 2024	



BENCH MARK
BENCHMARKS SHOWN HEREON ARE GEODETIC IN ORIGIN DERIVED FROM CGVD2013 BENCHMARK No. 60U3306, IRON PIPE WITH BRASS CAP ON TOP OF SAND CUT ON COUNTY ROAD 36, 76 CM SOUTHEAST OF WIRE FENCE ALONG NORTHWEST LIMIT OF RIGHT-OF-WAY, AS SHOWN ON A TOPOGRAPHIC SURVEY BY A PRIVATE OLS, DATED 20231217, ELEV = 277.33.

- LEGEND**
- DRAINAGE BOUNDARY
 - DRAINAGE AREA
 - ID/CURVE NUMBER
 - OVERLAND FLOW DIRECTION
 - WETLAND BOUNDARY
 - 30m WETLAND BOUNDARY OFFSET

NOTE: THIS PLAN IS FOR STORM DRAINAGE AREAS ONLY

PRELIMINARY
NOT FOR CONSTRUCTION

1	20241216	REVISED AS PER CONSERVATION AUTHORITY COMMENTS	C.J.
NO.	DATE	REVISION	BY

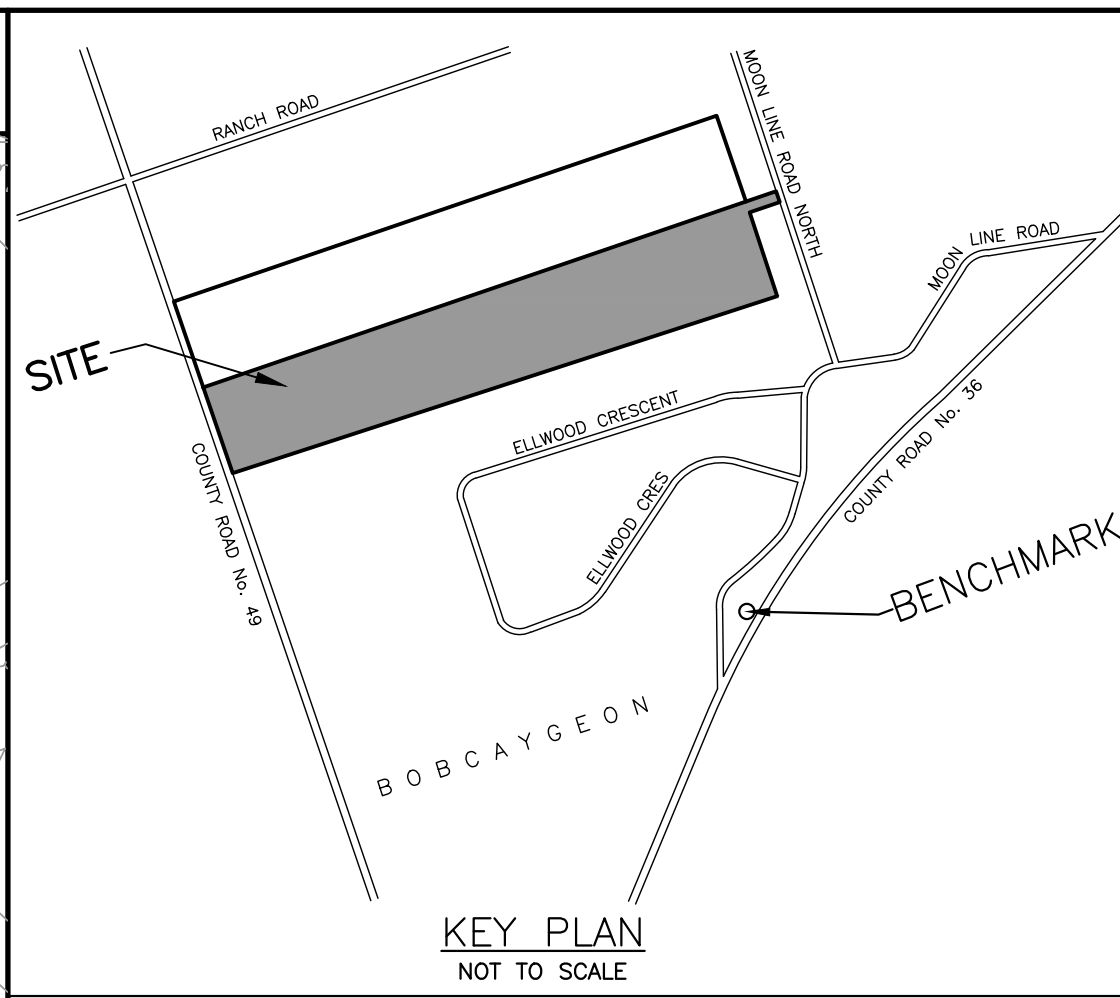
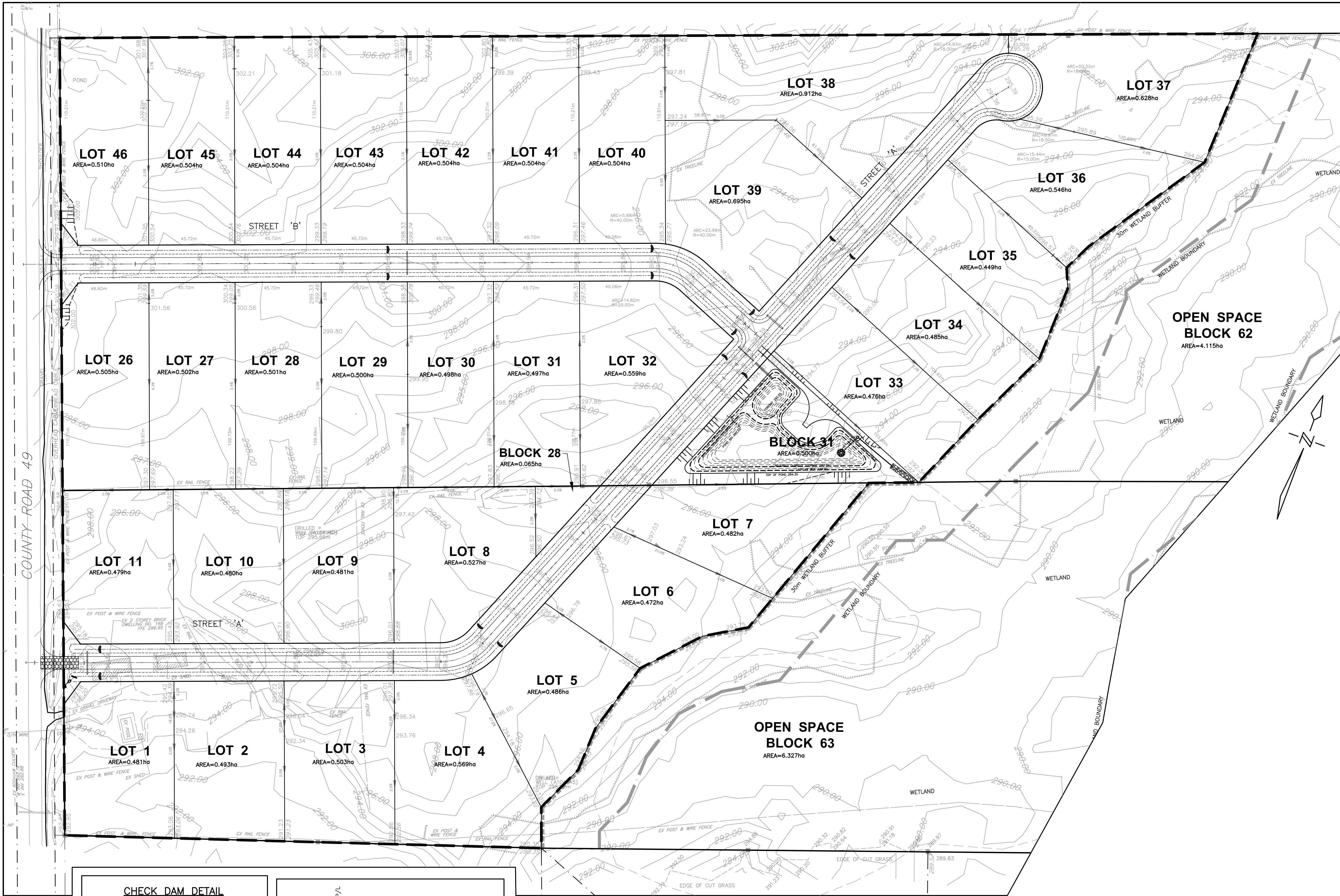
APPROVED	APPROVED
DIRECTOR, ENGINEERING SERVICES MUNICIPALITY OF	DIRECTOR, ENGINEERING SERVICES REGION OF
DATE:	DATE:

TRENT LAKES
ENGINEERING SERVICES DEPARTMENT
JEFFERY SUBDIVISION
BOBCAYGEON

PRE-DEVELOPMENT STORM DRAINAGE PLAN – WEST

D.G. BIDDLE & ASSOCIATES
CONSULTING ENGINEERS & PLANNERS
96 King Street East
Oshawa, Ontario, L1H 1B6
Phone: 905-576-8500
info@dgbidle.com
dgbidle.com

	SCALE: 1:1000	PROJECT NO. 122169
	DRAWN BY: M.J.H.	DRAWING NO.
	DESIGN BY: M.J.H.	SD-1
	CHECKED BY: D.D.M.	
	DATE: JAN 2024	



BENCH MARK
BENCHMARKS SHOWN HEREON ARE GEODETIC IN ORIGIN DERIVED FROM CVD2013 BENCHMARK No. 603306, IRON PIPE WITH BRASS CAP ON TOP OF SAND CUT ON COUNTY ROAD 36, 76 CM SOUTHEAST OF WIRE FENCE ALONG NORTHWEST LIMIT OF RIGHT-OF-WAY, AS SHOWN ON A TOPOGRAPHIC SURVEY BY A PRIVATE OLS, DATED 20231217. ELEV = 277.33.

- DUST CONTROL MEASURES:**
- A. PRE-GRADING PLANNING**
1. THE SITE SERVICING FOR THE SITE SHALL BE SCHEDULED SUCH THAT THE OVERALL TIME THE AREAS ARE LEFT OPEN TO WIND THAT CREATE BLOWING DUST FROM THE EARTHWORK OPERATIONS IS MINIMIZED.
 2. THE TOPSOIL STOCKPILE (IF APPLICABLE) SHALL BE STABILIZED WITHIN 30 DAYS OF STOCKPILING MATERIALS IN ACCORDANCE WITH CITY'S CRITERIA. ALL DISTURBED LANDS OUTSIDE THE PHASE OF WORK SHALL BE STABILIZED/VEGETATED.
 3. THE CONTRACTOR SHALL APPLY WATER TO HAUL ROADS AND STOCKPILES (IF APPLICABLE) BY WAY OF WATER TRUCK.
- B. WATERING (POST GRADING)**
4. WITHIN AREAS WHERE EARTHWORKS AND/OR UNDERGROUND MUNICIPAL SERVICING IS ON-GOING, WATER IS TO BE UTILIZED AT SUFFICIENT QUANTITY TO PREVENT VISIBLE EMISSIONS FROM EXTENDING MORE THAN 30m FROM THE POINT OF ORIGIN.
- C. REDUCE VEHICLE SPEED**
5. THE ON-SITE SPEED LIMIT FOR CONSTRUCTION VEHICLES SHALL BE MINIMIZED AND TO BE USED IN CONJUNCTION WITH WATERING TO PREVENT VISIBLE DUST EMISSIONS.
- D. RESTRICT ACTIVITIES DURING HIGH WIND PERIODS**
6. THE HIGH VISIBILITY OF CERTAIN WORKS AND THE CLOSE PROXIMITY AND POPULATION IMPACT SHOULD BE TAKEN INTO CONSIDERATION WHEN SCHEDULING DUST-PRODUCING WORK. APPROPRIATE DUST CONTROL MEASURES SHALL BE IN PLACE IN SUCH SITUATIONS.
- E. ROAD CLEANING**
7. SPILLAGE, EROSION OR MATERIALS "TRACKED OUT" ON A ROAD TO BE CLEANED USING MECHANICAL STREET SWEEPERS OR FLUSHER TRUCK AT LEAST BY THE END OF THE WORK DAY. HOWEVER, IF SPILLAGE EXTENDS MORE THAN 15m ALONG A PAVED PUBLIC ROADWAY, IT MUST BE CLEANED UP IMMEDIATELY.
 8. IMPORTING AND EXPORTING OF MATERIALS ON AND OFF-SITE WILL BE SHUT DOWN DURING AND FOLLOWING INCLEMENT WEATHER UNTIL THE ROAD SURFACES HAVE BEEN CLEANED.

- SEDIMENT CONTROL CONSTRUCTION SCHEDULE**
1. INSTALL PERIMETER ENVIRO FENCE AND CONSTRUCTION VEHICLE ACCESS.
 2. EXCAVATE PERIMETER SWALES AND SEDIMENT PONDS AS REQUIRED.
 3. STRIP SITE OF TOPSOIL AND REMOVE OFF SITE OR STOCK PILE AND PROVIDE ENVIRO FENCE AROUND BOTTOM OF PILE.
 4. INSTALL MINOR STORM SEWER SYSTEM ALONG WITH OTHER SERVICES.
 5. INSTALL CATCHBASIN FILTRATION ON ALL CATCHBASINS AND CATCHBASIN.
 6. SEDIMENT CONTROL MEASURES ARE TO BE MAINTAINED UNTIL ALL AREAS OF THE SITE HAVE BEEN STABILIZED WITH SOD OR ASPHALT.

PRELIMINARY
NOT FOR CONSTRUCTION

NO.	DATE	REVISION	BY
1	20241216	REVISED AS PER CONSERVATION AUTHORITY COMMENTS	C.J.

APPROVED	APPROVED
DIRECTOR, ENGINEERING SERVICES MUNICIPALITY OF	DIRECTOR, ENGINEERING SERVICES REGION OF
DATE	DATE

TRENT LAKES
ENGINEERING SERVICES DEPARTMENT
JEFFERY SUBDIVISION
BOBCAYGEON

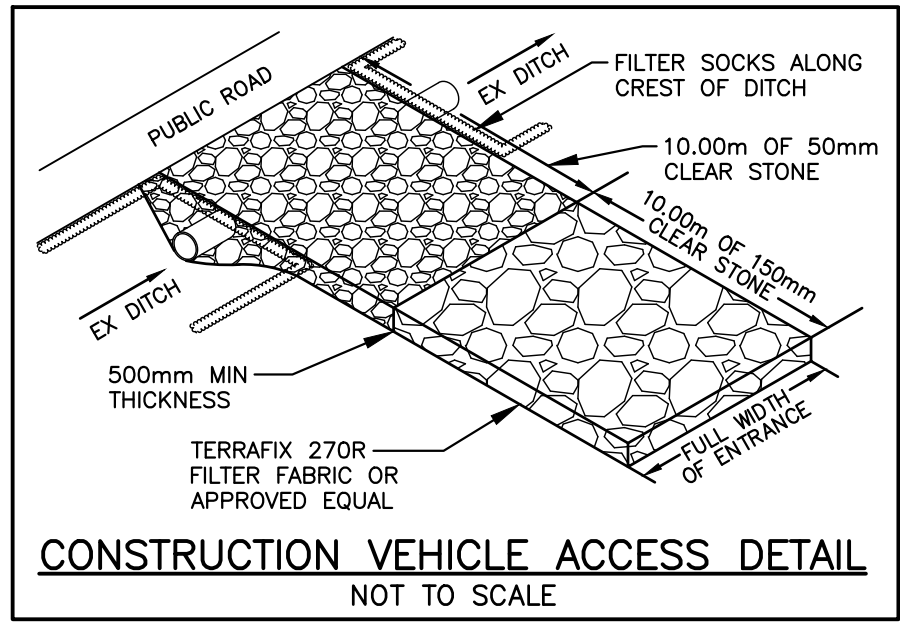
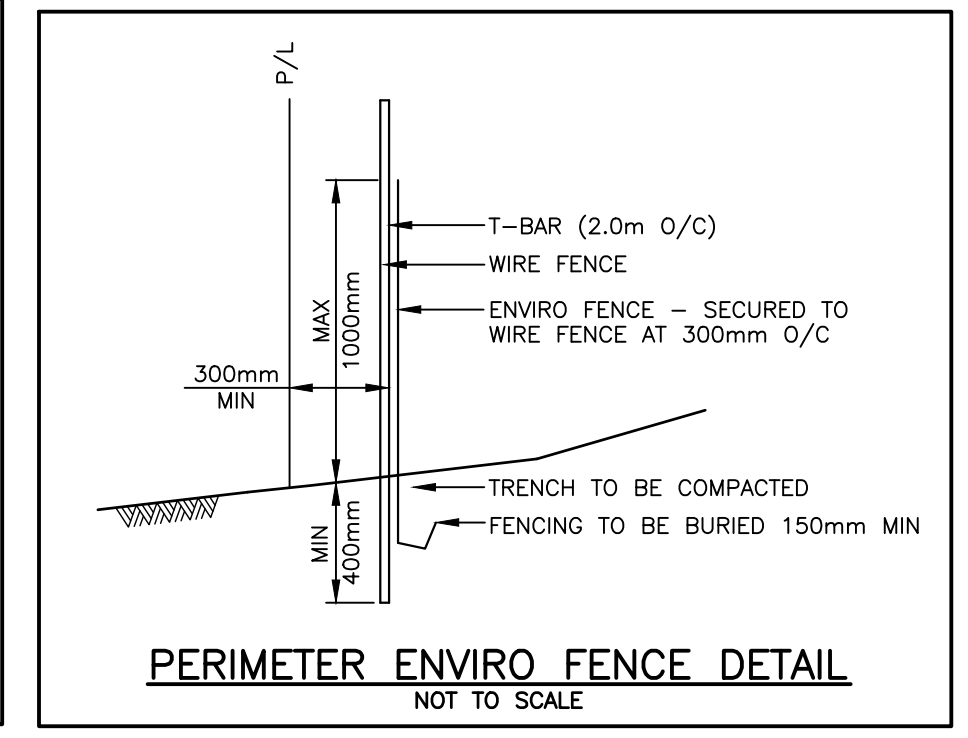
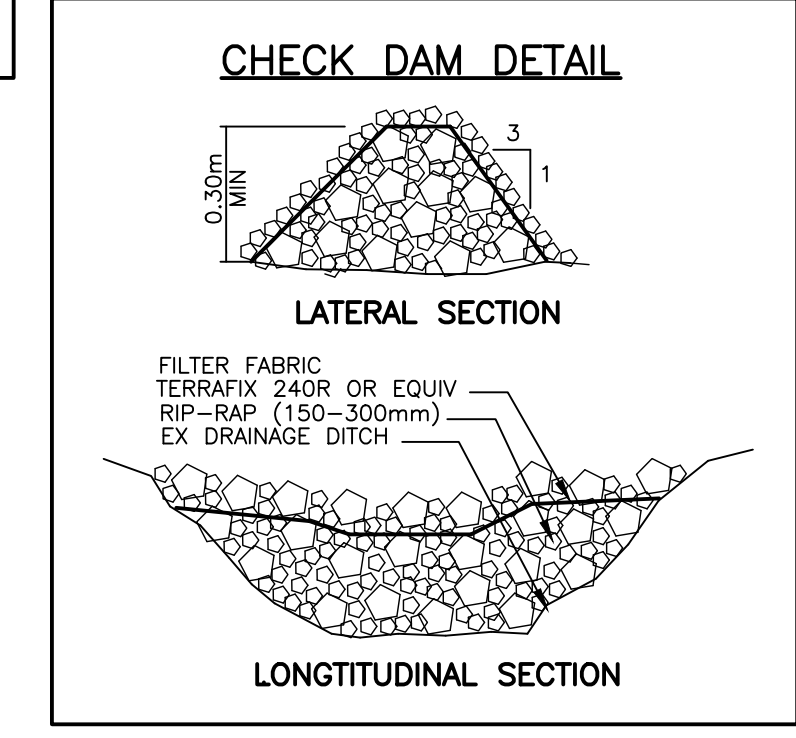
EROSION AND SEDIMENT CONTROL PLAN



D.G. BIDDLE & ASSOCIATES
CONSULTING ENGINEERS & PLANNERS

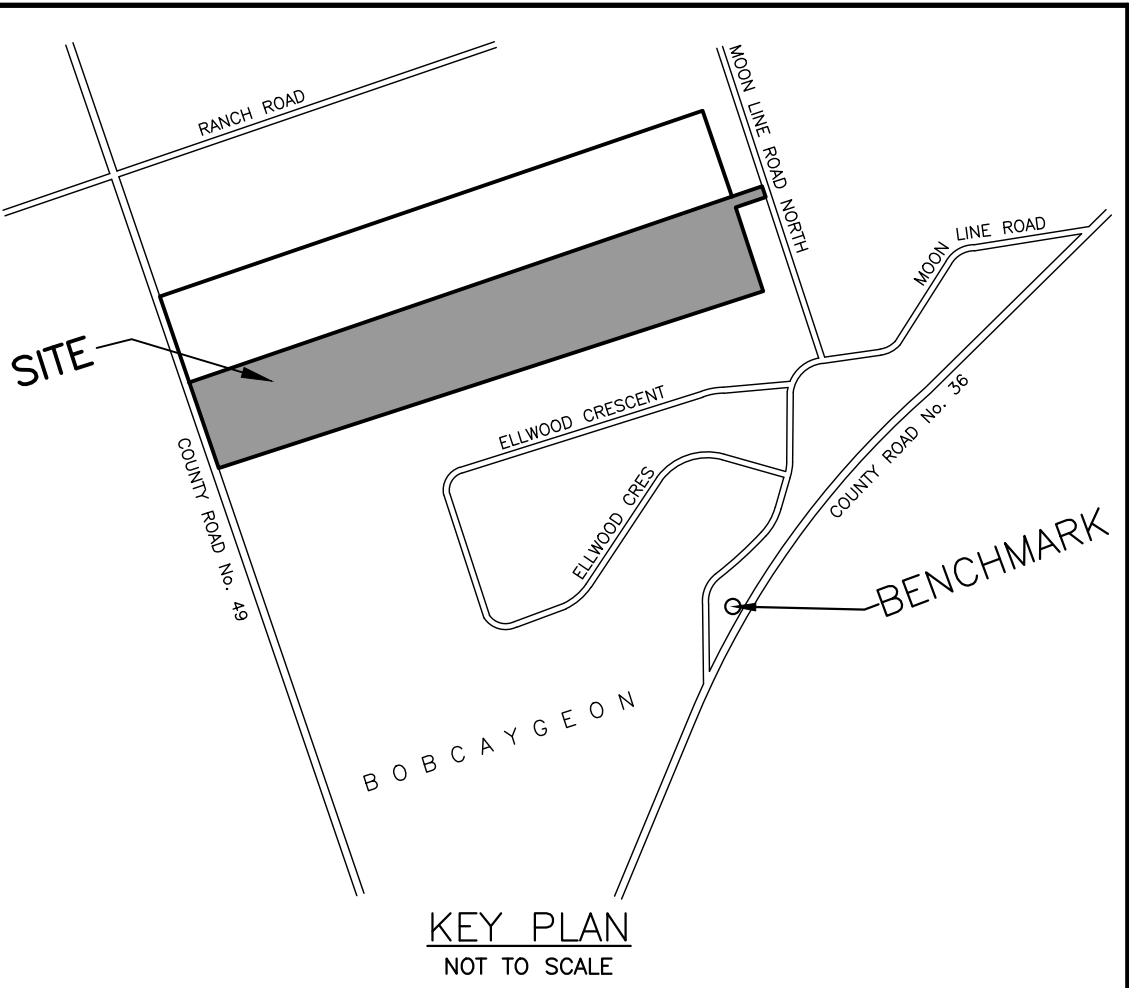
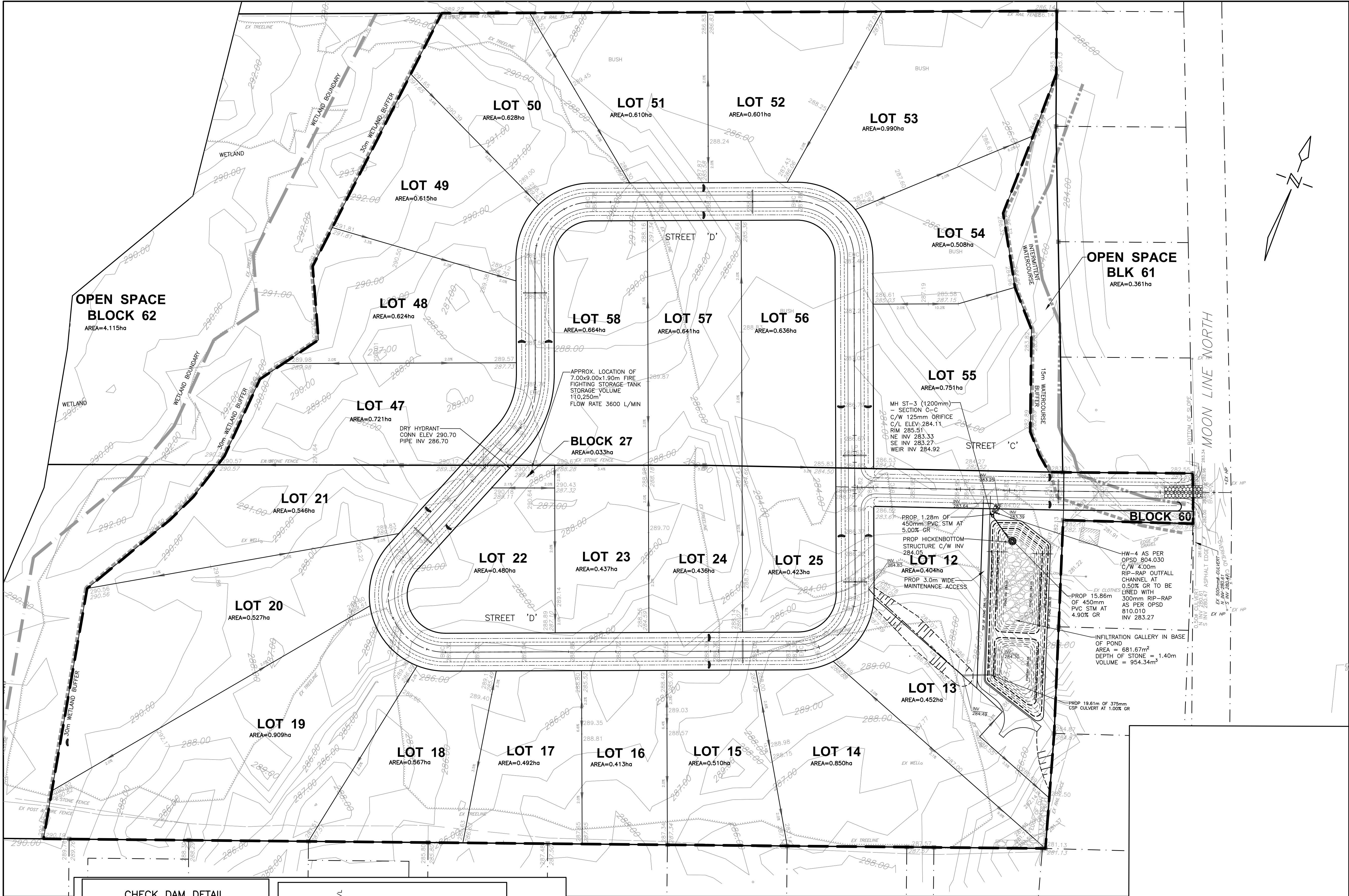
96 King Street East
Oshawa, Ontario, L1H 1B6
Phone: 905-576-8500
info@dgbidle.com
dgbidle.com

SCALE: 1:1000	PROJECT NO. 122169
DRAWN BY: M.J.H.	DRAWING NO. ES-1
DESIGN BY: M.J.H.	
CHECKED BY: D.D.M.	
DATE: JAN 2024	



- SEDIMENT CONTROL NOTES:**
1. THE EROSION AND SEDIMENT CONTROL STRATEGIES ON THE PLANS ARE NOT STATIC AND MAY NEED TO BE UPGRADED/AMENDED AS SITE CONDITIONS CHANGE TO PREVENT SEDIMENT RELEASES.
 2. DISTURBED AREAS LEFT FOR 30 DAYS OR LONGER MUST BE STABILIZED WITH SEED APPLICATION AS DIRECTED BY THE ENGINEER.
 3. INSPECTION OF THE PROPOSED EROSION AND SEDIMENT CONTROL MEASURES WILL OCCUR ON A WEEKLY BASIS AND AFTER MAJOR RAINFALL OR SNOW MELT EVENTS, AS FOLLOWS:
 - SILT FENCES MUST BE INSPECTED FOR RIPS OR TEARS, BROKEN STAKES, BLOW OUTS AND ACCUMULATIONS OF SEDIMENT. ACCUMULATED SEDIMENT MUST BE REMOVED FROM THE FENCE AT A DEPTH OF 300mm.
 - ROCK CHECK DAMS ARE TO BE CLEANED OF ALL ACCUMULATED SEDIMENT AS SOON AS SEDIMENT HAS A DEPTH OF 50% OF THE HEIGHT OF THE CHECK DAM.
 - ALL DAMAGED EROSION AND SEDIMENT CONTROL MEASURES SHALL BE REPAIRED AND/OR REPLACED WITHIN 24 HOURS OF INSPECTION IF RECEPTORS ARE AT IMMINENT RISK OF ADVERSE IMPACT.

- LEGEND**
- PERIMETER ENVIRO FENCE
- DIRECTION OF OVERLAND FLOW
- RIP RAP CHECKDAM
- CONSTRUCTION VEHICLE ACCESS



BENCH MARK
BENCHMARKS SHOWN HEREON ARE GEODETIC IN ORIGIN DERIVED FROM CGVD2013 BENCHMARK No. 60U3306, IRON PIPE WITH BRASS CAP ON TOP OF SAND CUT ON COUNTY ROAD 36, 76 CM SOUTHEAST OF WIRE FENCE ALONG NORTHWEST LIMIT OF RIGHT-OF-WAY, AS SHOWN ON A TOPOGRAPHIC SURVEY BY A PRIVATE OLS, DATED 20231217. ELEV = 277.33.

- DUST CONTROL MEASURES:**
- A. PRE-GRADING PLANNING**
1. THE SITE SERVICING FOR THE SITE SHALL BE SCHEDULED SUCH THAT THE OVERALL TIME THE AREAS ARE LEFT OPEN TO WIND THAT CREATE BLOWING DUST FROM THE EARTHWORK OPERATIONS IS MINIMIZED.
 2. THE TOPSOIL STOCKPILE (IF APPLICABLE) SHALL BE STABILIZED WITHIN 30 DAYS OF STOCKPILING MATERIALS IN ACCORDANCE WITH CITY'S CRITERIA. ALL DISTURBED LANDS OUTSIDE THE PHASE OF WORK SHALL BE STABILIZED/VEGETATED.
 3. THE CONTRACTOR SHALL APPLY WATER TO HAUL ROADS AND STOCKPILES (IF APPLICABLE) BY WAY OF WATER TRUCK.
- B. WATERING (POST GRADING)**
4. WITHIN AREAS WHERE EARTHWORKS AND/OR UNDERGROUND MUNICIPAL SERVICING IS ON-GOING, WATER IS TO BE UTILIZED AT SUFFICIENT QUANTITY TO PREVENT VISIBLE EMISSIONS FROM EXTENDING MORE THAN 30m FROM THE POINT OF ORIGIN.
- C. REDUCE VEHICLE SPEED**
5. THE ON-SITE SPEED LIMIT FOR CONSTRUCTION VEHICLES SHALL BE MINIMIZED AND TO BE USED IN CONJUNCTION WITH WATERING TO PREVENT VISIBLE DUST EMISSIONS.
- D. RESTRICT ACTIVITIES DURING HIGH WIND PERIODS**
6. THE HIGH VISIBILITY OF CERTAIN WORKS AND THE CLOSE PROXIMITY AND POPULATION IMPACT SHOULD BE TAKEN INTO CONSIDERATION WHEN SCHEDULING DUST-PRODUCING WORK. APPROPRIATE DUST CONTROL MEASURES SHALL BE IN PLACE IN SUCH SITUATIONS.
- E. ROAD CLEANING**
7. SPILLAGE, EROSION OR MATERIALS "TRACKED OUT" ON A ROAD TO BE CLEANED USING MECHANICAL STREET SWEEPERS OR FLUSHER TRUCK AT LEAST BY THE END OF THE WORK DAY. HOWEVER, IF SPILLAGE EXTENDS MORE THAN 15m ALONG A PAVED PUBLIC ROADWAY, IT MUST BE CLEANED UP IMMEDIATELY.
 8. IMPORTING AND EXPORTING OF MATERIALS ON AND OFF-SITE WILL BE SHUT DOWN DURING AND FOLLOWING INCLEMENT WEATHER UNTIL THE ROAD SURFACES HAVE BEEN CLEANED.

- SEDIMENT CONTROL CONSTRUCTION SCHEDULE**
1. INSTALL PERIMETER ENVIRO FENCE AND CONSTRUCTION VEHICLE ACCESS.
 2. EXCAVATE PERIMETER SWALES AND SEDIMENT PONDS AS REQUIRED.
 3. STRIP SITE OF TOPSOIL AND REMOVE OFF SITE OR STOCK PILE AND PROVIDE ENVIRO FENCE AROUND BOTTOM OF PILE.
 4. INSTALL MINOR STORM SEWER SYSTEM ALONG WITH OTHER SERVICES.
 5. INSTALL CATCHBASIN FILTRATION ON ALL CATCHBASINS AND CATCHBASIN.
 6. SEDIMENT CONTROL MEASURES ARE TO BE MAINTAINED UNTIL ALL AREAS OF THE SITE HAVE BEEN STABILIZED WITH SOD OR ASPHALT.

PRELIMINARY
NOT FOR CONSTRUCTION

NO.	DATE	REVISION	BY
1	20241216	REVISED AS PER CONSERVATION AUTHORITY COMMENTS	C.J.

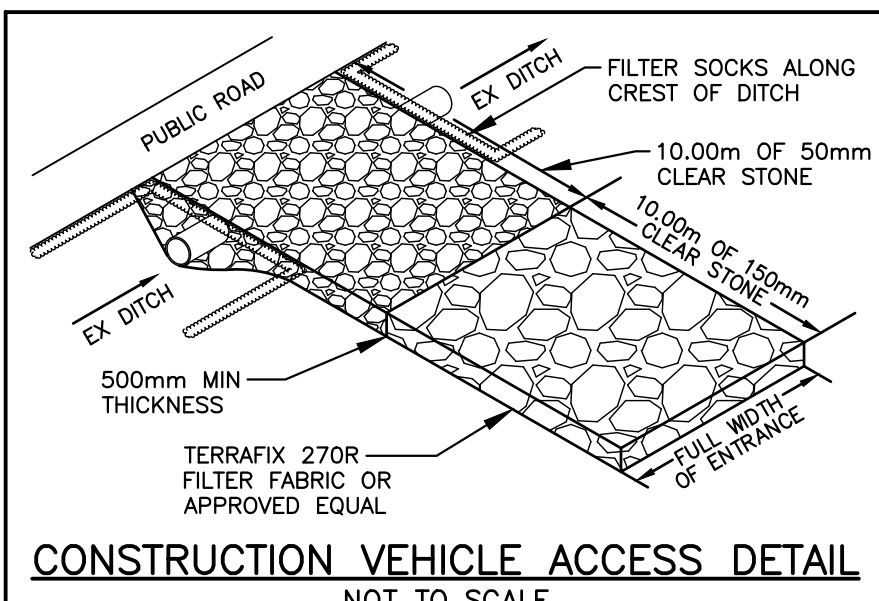
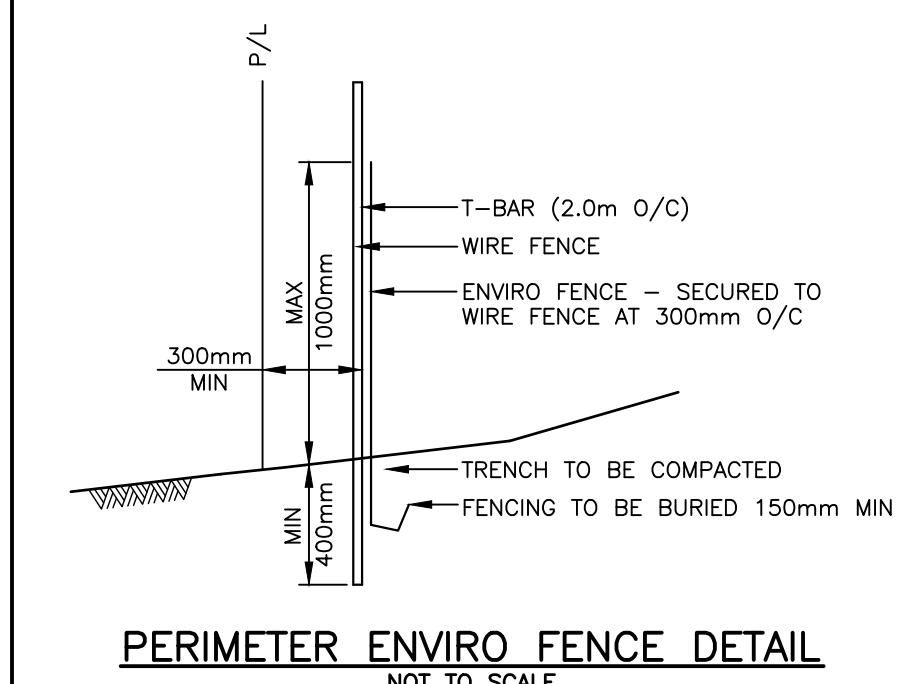
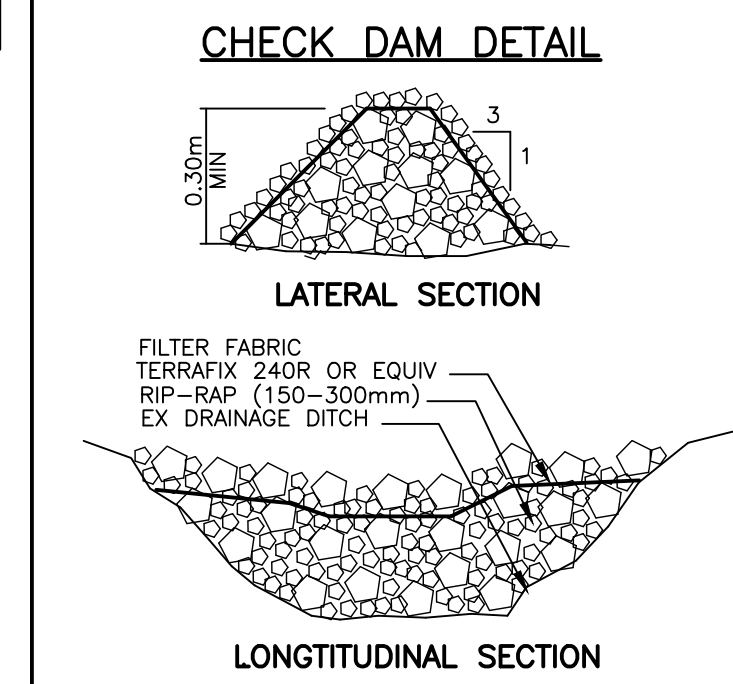
APPROVED	APPROVED
DIRECTOR, ENGINEERING SERVICES MUNICIPALITY OF	DIRECTOR, ENGINEERING SERVICES REGION OF
DATE	DATE

TRENT LAKES
ENGINEERING SERVICES DEPARTMENT
JEFFERY SUBDIVISION
BOBCAYGEON

EROSION AND SEDIMENT CONTROL PLAN

D.G. BIDDLE & ASSOCIATES
CONSULTING ENGINEERS & PLANNERS
96 King Street East
Oshawa, Ontario, L1H 1B6
Phone: 905-576-8500
info@dgibiddle.com
dgibiddle.com

SCALE: 1:1000	PROJECT NO. 122169
DRAWN BY: M.J.H.	DRAWING NO. ES-2
DESIGN BY: M.J.H.	
CHECKED BY: D.D.M.	
DATE: JAN 2024	



- SEDIMENT CONTROL NOTES:**
1. THE EROSION AND SEDIMENT CONTROL STRATEGIES ON THE PLANS ARE NOT STATIC AND MAY NEED TO BE UPGRADED/AMENDED AS SITE CONDITIONS CHANGE TO PREVENT SEDIMENT RELEASES.
 2. DISTURBED AREAS LEFT FOR 30 DAYS OR LONGER MUST BE STABILIZED WITH SEED APPLICATION AS DIRECTED BY THE ENGINEER.
 3. INSPECTION OF THE PROPOSED EROSION AND SEDIMENT CONTROL MEASURES WILL OCCUR ON A WEEKLY BASIS AND AFTER MAJOR RAINFALL OR SNOW MELT EVENTS, AS FOLLOWS:
 - SILT FENCES MUST BE INSPECTED FOR RIPS OR TEARS, BROKEN STAKES, BLOW OUTS AND ACCUMULATIONS OF SEDIMENT. ACCUMULATED SEDIMENT MUST BE REMOVED FROM THE FENCE AT A DEPTH OF 300mm.
 - ROCK CHECK DAMS ARE TO BE CLEANED OF ALL ACCUMULATED SEDIMENT AS SOON AS SEDIMENT HAS A DEPTH OF 50% OF THE HEIGHT OF THE CHECK DAM.
 - ALL DAMAGED EROSION AND SEDIMENT CONTROL MEASURES SHALL BE REPAIRED AND/OR REPLACED WITHIN 24 HOURS OF INSPECTION IF RECEPTORS ARE AT IMMINENT RISK OF ADVERSE IMPACT.

- LEGEND**
- PERIMETER ENVIRO FENCE
- DIRECTION OF OVERLAND FLOW
- RIP RAP CHECKDAM
- CONSTRUCTION VEHICLE ACCESS