

UNIT #	AREA (ha)
1	0.038
2	0.038
3	0.038
4	0.041
5	0.041
6	0.041
7	0.041
8	0.039
9	0.040
10	0.040
11	0.040
12	0.041
13	0.041
14	0.045
15	0.044
16	0.040
17	0.038
18	0.040
19	0.043
20	0.046
21	0.046
22	0.043
23	0.059
24	0.052
25	0.049
26	0.047
27	0.045
28	0.047
29	0.059
30	0.073
31	0.047
32	0.043
33	0.043
34	0.042
35	0.044
36	0.058
37	0.096
38	0.082
39	0.057
40	0.043
41	0.043
42	0.042
43	0.040
44	0.044
45	0.050
46	0.043
47	0.047
48	0.038
49	0.047
50	0.039
51	0.038
52	0.048
53	0.050
54	0.041
55	0.039
56	0.038
57	0.044
58	0.068
59	0.069
60	0.058
61	0.066
62	0.046
63	0.040
64	0.042
65	0.040
66	0.048
67	0.037
68	0.040
69	0.040
70	0.039
71	0.038
72	0.038
73	0.039
74	0.041
75	0.043
76	0.046
77	0.044
78	0.040
79	0.034
80	0.042
81	0.047
82	0.039
83	0.042
84	0.042
85	0.042
86	0.042
87	0.042
88	0.042
89	0.042
90	0.042

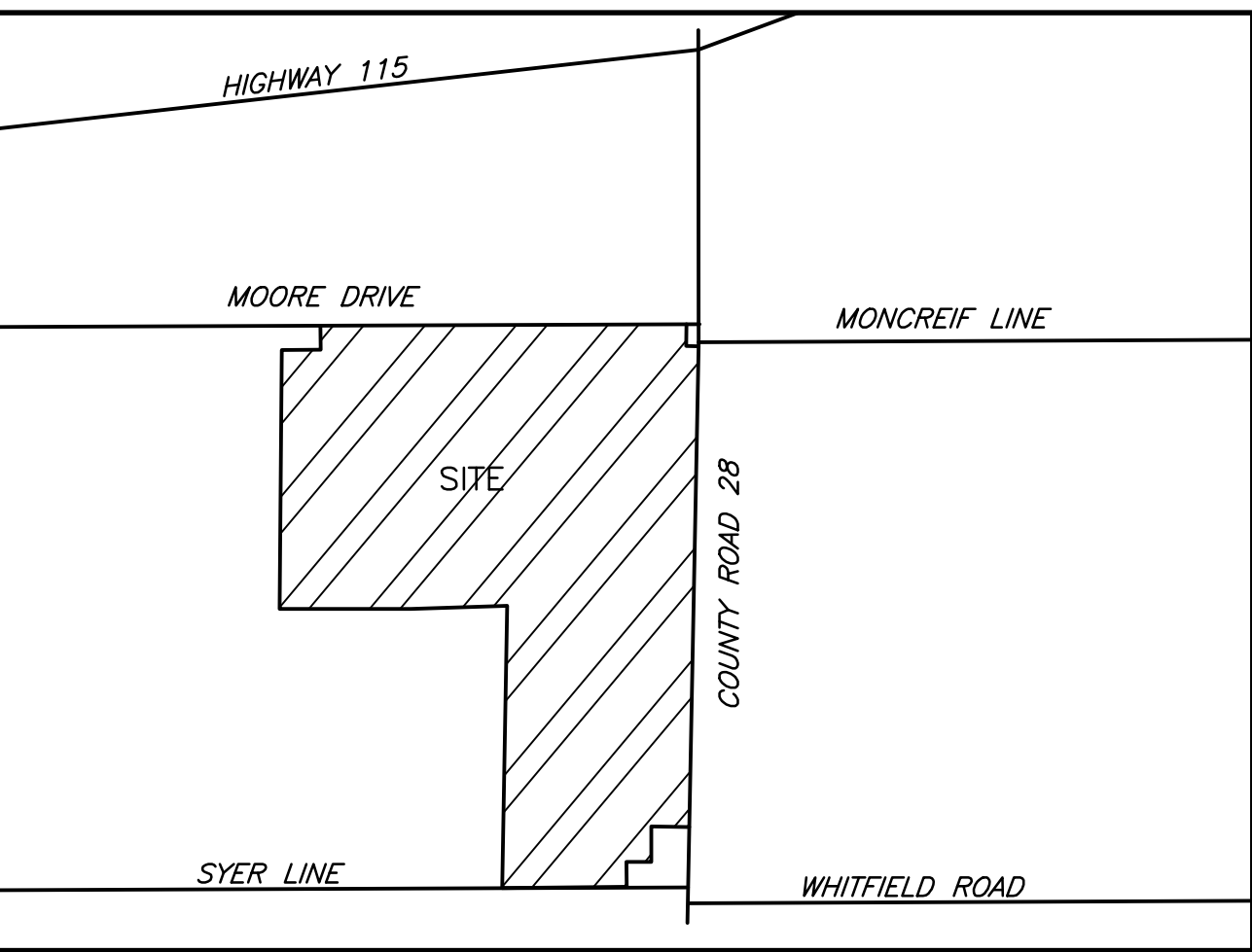
UNIT #	AREA (ha)
91	0.042
92	0.042
93	0.042
94	0.042
95	0.042
96	0.042
97	0.042
98	0.042
99	0.040
100	0.042
101	0.041
102	0.038
103	0.037
104	0.035
105	0.045
106	0.041
107	0.034
108	0.040
109	0.040
110	0.062
111	0.071
112	0.062
113	0.038
114	0.038
115	0.038
116	0.038
117	0.038
118	0.038
119	0.053
120	0.047
121	0.048
122	0.043
123	0.036
124	0.036
125	0.036
126	0.036
127	0.036
128	0.036
129	0.036
130	0.036
131	0.036
132	0.036
133	0.036
134	0.036
135	0.036
136	0.036
137	0.036
138	0.036
139	0.036
140	0.036
141	0.036
142	0.036
143	0.036
144	0.036
145	0.038
146	0.042
147	0.043
148	0.045
149	0.040
150	0.045
151	0.044
152	0.043
153	0.048
154	0.041
155	0.035
156	0.035
157	0.035
158	0.035
159	0.048
160	0.037
161	0.038
162	0.038
163	0.038
164	0.038
165	0.038
166	0.038
167	0.038
168	0.047
169	0.078
170	0.056
171	0.041
172	0.039
173	0.039
174	0.039
175	0.038
176	0.038
177	0.038
178	0.038
179	0.038
180	0.038

UNIT #	AREA (ha)
181	0.046
182	0.039
183	0.035
184	0.035
185	0.035
186	0.038
187	0.038
188	0.038
189	0.038
190	0.038
191	0.038
192	0.038
193	0.038
194	0.038
195	0.040
196	0.042
197	0.074
198	0.068
199	0.041
200	0.041
201	0.041
202	0.038
203	0.040
204	0.040
205	0.040
206	0.040
207	0.040
208	0.040
209	0.038
210	0.038
211	0.038
212	0.035
213	0.040
214	0.032
215	0.032
216	0.032
217	0.032
218	0.032
219	0.032
220	0.032
221	0.032
222	0.032
223	0.032
224	0.032
225	0.032
226	0.032
227	0.032
228	0.032
229	0.032
230	0.032
231	0.055
232	0.036
233	0.036
234	0.036
235	0.036
236	0.036
237	0.036
238	0.032
239	0.032
240	0.032
241	0.032
242	0.032
243	0.032
244	0.032
245	0.032
246	0.032

UNIT #	AREA (ha)
247	0.033
248	0.033
249	0.033
250	0.033
251	0.033
252	0.033
253	0.033
254	0.037
255	0.038
256	0.038
257	0.038
258	0.038
259	0.038
260	0.038
261	0.038
262	0.038
263	0.038
264	0.038
265	0.038
266	0.038
267	0.038
268	0.042
269	0.042
270	0.042
271	0.038
272	0.032
273	0.074
274	0.041
275	0.040
276	0.036
277	0.039
278	0.037
279	0.037
280	0.037
281	0.037
282	0.037
283	0.037
284	0.037
285	0.037
286	0.035
287	0.035
288	0.035
289	0.035
290	0.035
291	0.035
292	0.037
293	0.035
294	0.035
295	0.035
296	0.035
297	0.035
298	0.036
299	0.043
300	0.035
301	0.035
302	0.035
303	0.035
304	0.038
305	0.051
306	0.045
307	0.039
308	0.072
309	0.042
310	0.035
311	0.035
312	0.035
313	0.035
314	0.035
315	0.035
316	0.035
317	0.035
318	0.035
319	0.046
320	0.089
321	0.039
322	0.035
323	0.035
324	0.035
325	0.035
326	0.032
327	0.055

UNIT #	AREA (ha)
328	0.049
329	0.043
330	0.043
331	0.041
332	0.040
333	0.040
334	0.040
335	0.040
336	0.040
337	0.040
338	0.040
339	0.040
340	0.055
341	0.054
342	0.078
343	0.053
344	0.041
345	0.056
346	0.055
347	0.038
348	0.038
349	0.038
350	0.042
351	0.059
352	0.055
353	0.036
354	0.036
355	0.036
356	0.037
357	0.037
358	0.041
359	0.054
360	0.062
361	0.076
362	0.037
363	0.024
364	0.024
365	0.024
366	0.024
367	0.024
368	0.024
369	0.024
370	0.024
371	0.024
372	0.024
373	0.024
374	0.024
375	0.024
376	0.024
377	0.024
378	0.024
379	0.024
380	0.024
381	0.024
382	0.024
383	0.024
384	0.024
385	0.024
386	0.024
387	0.024
388	0.024
389	0.024
390	0.024
391	0.024
392	0.024
393	0.024
394	0.024
395	0.024
396	0.024
397	0.024
398	0.024

UNIT #	AREA (ha)
399	0.024
400	0.024
401	0.024
402	0.024
403	0.024
404	0.024
405	0.024
406	0.024
407	0.024
408	0.024
409	0.024
410	0.024
411	0.024
412	0.024
413	0.024
414	0.024
415	0.024
416	0.024
417	0.024
418	0.024
419	0.024
420	0.024
421	0.024
422	0.024
423	0.024
424	0.024
425	0.024
426	0.024
427	0.024
428	0.024
429	0.024
430	0.024
431	0.024
432	0.024
433	0.024
434	0.024
435	0.024
436	0.024
437	0.024
438	0.024
439	0.024
440	0.024
441	0.024
442	0.024
443	0.024
444	0.024
445	0.024
446	0.024
447	0.024
448	0.024
449	0.024
450	0.024
451	0.024
452	0.024
453	0.024
454	0.024
455	0.024
456	0.024
457	0.024
458	0.024
459	0.024
460	0.024
461	0.024
462	0.024
463	0.024
464	0.024
465	0.024
466	0.024
467	0.024
468	0.024
469	0.024
470	0.024
471	0.024
472	0.024
473	0.024
474	0.024
475	0.024
476	0.024
477	0.024
478	0.024
479	0.024
480	0.024
481	0.024
482	0.024
483	0.024
484	0.024
485	0.024
486	0.024
487	0.024
488	0.024
489	0.024
490	0.024
491	0.024
492	0.024
493	0.024
494	0.024
495	0.024
496	0.024
497	0.024
498	0.024
499	0.024
500	0.024



- LEGEND**
- ENVIRONMENTAL PROTECTION BOUNDARY
 - PROPOSED VACANT LAND CONDOMINIUM
 - EXCLUSIVE USE UNITS 19.76 ha.
 - PROPOSED COMMON ELEMENTS CONDOMINIUM
 - BLK 389,390 COMMON ELEMENTS (RECREATIONAL) 0.93ha
 - BLK 391 COMMON ELEMENTS (LANDSCAPE STRIP) 0.23ha.
 - BLK 392,393 COMMON ELEMENTS (SWM POND) 2.58ha.
 - BLK 394,395,396 COMMON ELEMENTS (OPEN SPACE) 42.40ha.
 - ROADS 20m ROW COMMON ELEMENTS (ROADWAY) 8.08ha.

LAND USE SCHEDULE <table><tr><th>PROPOSED USE</th><th>UNIT/BLK #</th><th># OF UNITS/BLKS</th><th># OF UNITS</th><th>AREA (ha)</th></tr><tr><td>LOW DENSITY RESIDENTIAL</td><td></td><td></td><td></td><td></td></tr><tr><td>SINGLE DETACHED (11,12m)</td><td>1-213, 231-237, 254-361</td><td>328</td><td>328</td><td>14.14</td></tr><tr><td>SEMI DETACHED (10m)</td><td>214-230, 238-253</td><td>33</td><td>66</td><td>2.27</td></tr><tr><td>MEDIUM DENSITY</td><td></td><td></td><td></td><td></td></tr><tr><td>BLOCK TOWNHOUSES (7.6m)</td><td>362-387</td><td>26</td><td>123</td><td>3.35</td></tr><tr><td>TOTAL RESIDENTIAL</td><td></td><td>387</td><td>517</td><td>19.76</td></tr><tr><td>NON RESIDENTIAL</td><td></td><td></td><td></td><td></td></tr><tr><td>PARK</td><td>389</td><td>1</td><td>1</td><td>0.83</td></tr><tr><td>WALKWAY</td><td>390</td><td>1</td><td>1</td><td>0.10</td></tr><tr><td>LANDSCAPE STRIP</td><td>391</td><td>1</td><td>1</td><td>0.23</td></tr><tr><td>STORMWATER</td><td>392, 393</td><td>2</td><td>2</td><td>2.58</td></tr><tr><td>OPEN SPACE</td><td>394-396</td><td>3</td><td>3</td><td>42.40</td></tr><tr><td>ROAD WIDENING</td><td>397</td><td>1</td><td>1</td><td>0.15</td></tr><tr><td>ROADS</td><td>20.0m ROW</td><td></</td></tr></table>	PROPOSED USE	UNIT/BLK #	# OF UNITS/BLKS	# OF UNITS	AREA (ha)	LOW DENSITY RESIDENTIAL					SINGLE DETACHED (11,12m)	1-213, 231-237, 254-361	328	328	14.14	SEMI DETACHED (10m)	214-230, 238-253	33	66	2.27	MEDIUM DENSITY					BLOCK TOWNHOUSES (7.6m)	362-387	26	123	3.35	TOTAL RESIDENTIAL		387	517	19.76	NON RESIDENTIAL					PARK	389	1	1	0.83	WALKWAY	390	1	1	0.10	LANDSCAPE STRIP	391	1	1	0.23	STORMWATER	392, 393	2	2	2.58	OPEN SPACE	394-396	3	3	42.40	ROAD WIDENING	397	1	1	0.15	ROADS	20.0m ROW	</
PROPOSED USE	UNIT/BLK #	# OF UNITS/BLKS	# OF UNITS	AREA (ha)																																																																					
LOW DENSITY RESIDENTIAL																																																																									
SINGLE DETACHED (11,12m)	1-213, 231-237, 254-361	328	328	14.14																																																																					
SEMI DETACHED (10m)	214-230, 238-253	33	66	2.27																																																																					
MEDIUM DENSITY																																																																									
BLOCK TOWNHOUSES (7.6m)	362-387	26	123	3.35																																																																					
TOTAL RESIDENTIAL		387	517	19.76																																																																					
NON RESIDENTIAL																																																																									
PARK	389	1	1	0.83																																																																					
WALKWAY	390	1	1	0.10																																																																					
LANDSCAPE STRIP	391	1	1	0.23																																																																					
STORMWATER	392, 393	2	2	2.58																																																																					
OPEN SPACE	394-396	3	3	42.40																																																																					
ROAD WIDENING	397	1	1	0.15																																																																					
ROADS	20.0m ROW	</																																																																							