



Peterborough County  
**Watershed  
Plan**

*Equivalent*

“DRAFT” Characterization, Planning  
and Management Recommendations

*External Stakeholders Meeting*

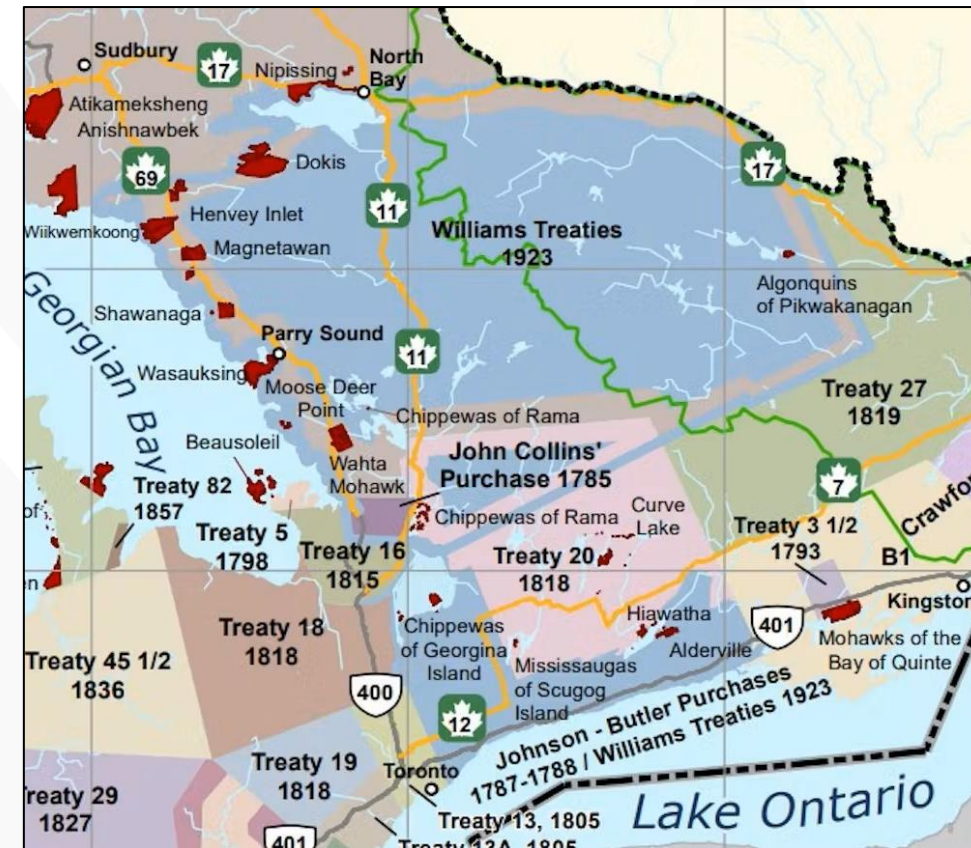
April 15, 2026



# Territorial Acknowledgement

We respectfully acknowledge that Peterborough County is located on the Treaty 20 Michi Saagiig territory and in the traditional territory of the Michi Saagiig and Chippewa Nations, collectively known as the Williams Treaties First Nation, which include: Alderville, Beausoleil, Curve Lake, Georgina Island, Hiawatha, Rama and Scugog Island First Nations.

Peterborough County respectfully acknowledges that the Williams Treaty First Nations are the stewards and caretakers of these lands and waters in perpetuity, and that they continue to maintain this responsibility to ensure their health and integrity for generations to come.



Map showing Williams Treaties areas (in periwinkle blue)

Source: 'First Nations and Treaties' Ontario government map, <https://theconversation.com/revisiting-the-williams-treaties-of-1923-anishinaabeg-perspectives-after-a-century-217764>

# Agenda

1. Welcome and Introductions
2. Project Overview
3. Planning Context
4. Watershed Plan Framework: Vision, Goals and Objectives
5. PAUSE: Facilitated Discussion Part 1
6. Characterization: Focus on Growth Areas
7. Watershed Planning and Management Guidance
8. PAUSE: Facilitated Discussion Part 2
9. Next Steps and Session Close



Road in the Kawarthas





# 1. Welcome and Introductions

# Introductions: Consulting Team



**Mariëtte Pushkar**  
Principal Fluvial Geomorphologist,  
Project Manager  
**Montrose Environmental**



**John McDonald**  
Senior Fluvial Geomorphologist,  
Project Coordinator  
**Montrose Environmental**



**Margot Ursic**  
Engagement Specialist,  
Natural Heritage Lead  
**Grounded Solutions**



**Ron Scheckenberger**  
Sr Water Resources Engineer,  
Advisor  
**Scheckenberger & Associates**

## **Montrose Environmental**

**Daron Abbey**, Groundwater Lead

**Zoey Zimmer**, Surface Water & Flood Hazard Lead

**Matt Wilkinson**, GIS Lead

**Kayla Goguen**, Fluvial Processes Specialist  
and other supporting personnel



# Introductions: County Project Team

---

## **Iain Mudd**

Director of Planning, Development & Public Works

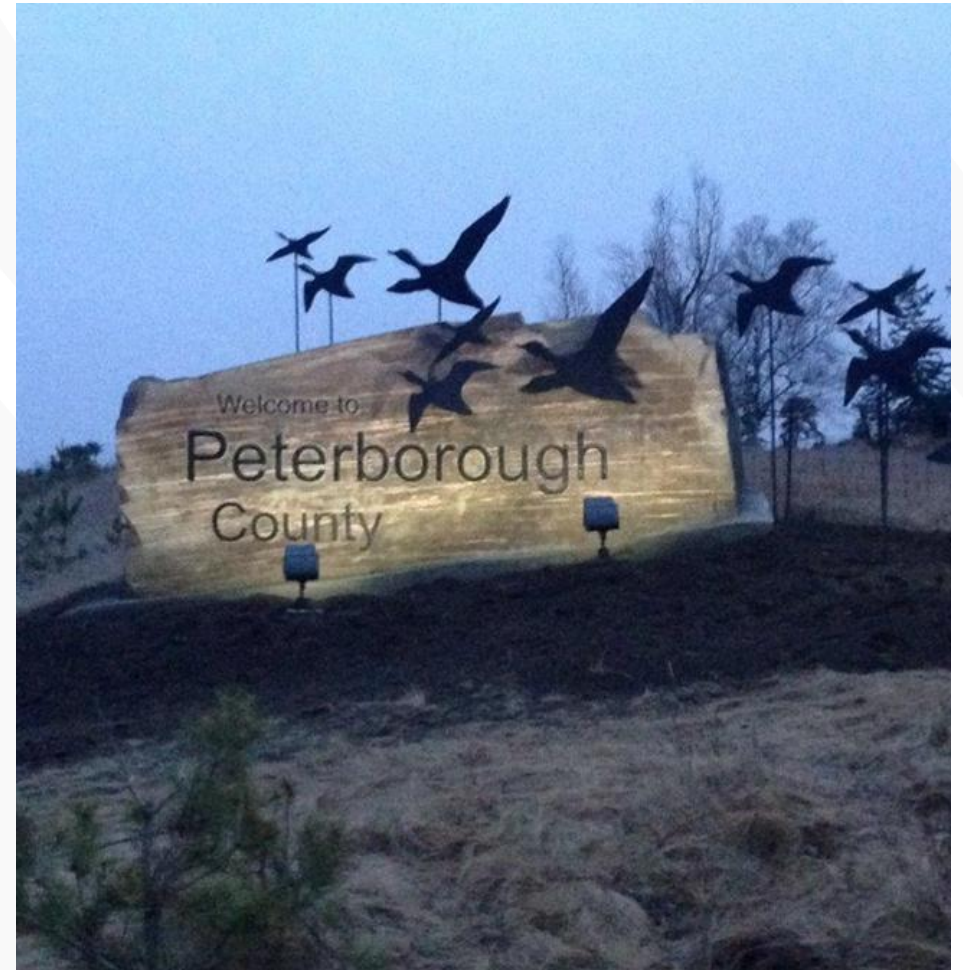
## **Keziah Holden**

General Manager, Planning

## **Doug Saccoccia**

General Manager, Engineering & Construction

... and other supporting personnel





## 2. Project Overview

# Project Rationale

- This Watershed Plan is identified as a priority in the County's 2023-2026 Strategic Plan.
- Needed to provide high-level technical and planning guidance to inform updates to the County's and local municipal Official Plans in conformity with current provincial planning requirements related to land use planning.
- Will also provide a County-wide framework for sustainable and science-based planning to support the protection of the County's valued natural heritage and water resources.



# Scope of a Watershed Plan “Equivalent”

- High-level synthesis and assessment of technical information based on available desktop (i.e., data, mapping) sources.
- Informed by input from municipal staff, local First Nations, agencies and community members based on their local knowledge and understanding of issues.
- Focus of assessment at the tertiary watershed scale with consideration for smaller quaternary watershed scales.



# Project Goals

---

1. Characterize existing conditions at the tertiary and quaternary watershed scales, including guidance for identifying the components of a Water Resource System (WRS) and Natural Heritage System (NHS).
2. Develop a vision, goals and objectives for the watershed.
3. Provide high-level planning and technical guidance and recommendations to:
  - a. protect WRS and NHS in a context of climate change
  - b. help advance local outreach and stewardship, and
  - c. inform future, more detailed subwatershed planning among the local municipalities.
4. Develop a plan collaboratively with input from local First Nations, municipalities, conservation authorities, and others in the community.



# Peterborough County Watershed Plan Equivalent: Updated Project Phasing and Timing

## PHASE 1 Project Launch and Background Review

### KEY DELIVERABLES

#### Background Summary / Technical Memo

Draft Watershed Mapping – Data Gap  
Analysis – Work Plan Confirmation

#### Phase 1 Engagement Summary

## PHASE 2 Watershed Characterization

### KEY DELIVERABLES

#### Volume 1: Characterization

Geology and Hydrogeology (incl. Source  
Water Protection) – Soils and Drainage  
Systems – Natural Hazards – Terrestrial  
and Aquatic Ecology – Preliminary  
Natural Heritage System (NHS) and  
Water Resource System (WRS)  
Guidance

## PHASE 3 Watershed Planning and Management Recommendations

### KEY DELIVERABLES

#### Volume 2: Planning and Management Guidance

Plan Vision, Goals and Objectives –  
High-level Impact Assessment – Planning  
Guidance – Management and Monitoring  
Recommendations

#### Phase 2/3 Engagement Summary

September 2024 – May 2025

June – December 2025

January – July 2026

# Peterborough County Watershed Plan Equivalent: Updated Engagement Process and Timing

## PHASE 1 ENGAGEMENT

### DRAFT Background Review Findings

Receive and consider input to  
draft Watershed Plan

1. Technical Advisory Committee (TAC) Workshop
3. Presentation to Council
4. TAC Workshop
5. First Nations Workshop
6. Interested Parties and Organizations Workshop

Nov. 2024 – March 2025

## PHASE 2/3 ENGAGEMENT

### DRAFT Watershed Characterization, Planning and Management Recommendations

Receive and consider input to  
refine Watershed Plan

7. Update Project Web Page
8. TAC Workshop
9. First Nations Workshop
10. Interested Parties and Organizations Workshop

January – April 2026

## PROJECT FINALIZATION

### FINAL Watershed Characterization, Planning and Management Recommendations

Receive and consider input to  
finalize Watershed Plan

11. TAC Workshop
  12. Presentation to Council
- Share final Plan updates and links on  
project Web Page

May – July 2026

# Technical Advisory Committee (TAC)

## Local First Nations

### Curve Lake First Nation

- Mindy Knott, David Rewniak

### Hiawatha First Nation

- Tom Cowie, Mandy McGonigle, Sean Davison

## Local Area Municipalities

### Municipality of Trent Lakes

- Adele Arbour, Derek Bertram

### Township of Asphodel-Norwood

- Adam Terry, Ed Whitmore

### Township of Cavan Monaghan

- Matt Wilkinson

### Township of Douro-Dummer

- Don Helleman, Jenna Ward, Emily Fitzgerald

### Township of Havelock-Belmont-Methuen

- Travis Toms

### Township of North Kawartha

- Laura Stone

## Local Area Municipalities (continued)

### Township of Otonabee-South Monaghan

- Emily Baker

### Township of Selwyn

- Per Lundberg

## Local Conservation Authorities

### Crowe Valley Conservation Authority

- Beth Lowe

### Ganaraska Region Conservation Authority

- Ken Thajer, Cory Harris

### Otonabee Region Conservation Authority

- Janette Loveys Smith, Don Allin

### Kawartha Region Conservation Authority

- Brett Tregunno, Nancy Aspden

## City and County of Peterborough

### City of Peterborough

- Ian Boland

### County of Peterborough (Project Lead)

- Iain Mudd, Keziah Holden, Doug Saccoccia

# Outreach Beyond the Technical Advisory Committee

## WILLIAMS TREATIES FIRST NATIONS NOT ON THE TECHNICAL ADVISORY COMMITTEE (TAC)

- Alderville First Nation
- Beausoleil First Nation
- Chippewas of Georgina Island First Nation
- Chippewas of Rama First Nation
- Mississaugas of Scugog Island First Nation

## GOVERNMENTAL AGENCIES AND INSTITUTIONS

- Peterborough Public Health
- Ministry of Natural Resources (Peterborough)
- Ministry of Environment, Conservation and Parks (Peterborough)
- Trent Severn Waterway at Parks Canada
- Trent University, School of the Environment and Fleming College

## UTILITIES

- Ontario Waterpower
- Peterborough Utilities Inc.

## AGRICULTURAL FEDERATION

- Peterborough County Federation of Agriculture - Ontario Federation of Agriculture (PCFA)

## LAKE AND COTTAGE ASSOCIATIONS

- Big Cedar Lake Road Committee (South Shore)
- Big Cedar Lake Stewardship Association
- Birchcliff Property Owners Association of Douro-Dummer, Inc.
- Buckhorn Sands Property Owners Association
- Coon Lake Cottagers
- Chandos Lake Property Owners Association
- Eels Lake Cottagers

## LAKE AND COTTAGE ASSOCIATIONS (Continued)

- Federation of Ontario Cottagers' Associations (FOCA - Peterborough)
- Jack's Lake Association
- Julian Lake Cottagers
- Juniper Point Cottage Owners' Association
- Kawartha Lake Stewards Association
- Kawartha Park Cottagers Association
- Long Lake, Loucks Lake Cottager's Association
- Looncall Lake Cottagers Association
- Lovesick Lake Association
- North Kawartha Lakes Association
- Rice Lake Tourism Association
- Sandy Point Road Association
- Stoney Lake Cottagers
- Upper Stoney Lake Association
- Wolf Lake Cottage Association

## OTHER LOCAL ORGANIZATIONS

- Baxter Creek Watershed Alliance
- Coalition for Equitable Water Flow (CEWF)
- Environment Council for Clear, Stony and White Lakes (ECCSWL)
- Ontario Woodlot Association
- Peterborough Field Naturalists
- Kawartha Lake Stewards Association (KLSA), Kawartha Land Trust (KLT) and Kawartha Conservation and Climate Partnerships
- Mun. of Trent Lakes Environmental Advisory Committee (EAC) - Shoreline Sub-Committee
- Watersheds Canada

# Select Feedback from Phase 1 Engagement

## WILLIAMS TREATIES FIRST NATIONS

- Importance of water as the “bloodline” of the people and recommended referring to the First Nations in Ontario Water Declaration (Chiefs of Ontario 2008) and the UN Declaration on the Rights of Indigenous Peoples (UNDRIP) (see below).



Credit: Parks Ontario

## TECHNICAL ADVISORY COMMITTEE (TAC)

- Support for building / drawing on some of the language from the County’s 2023-2026 Strategic Plan which was developed collaboratively with the local area municipalities.

## LAKE AND COTTAGE ASSOCIATIONS AND OTHER LOCAL ORGANIZATIONS

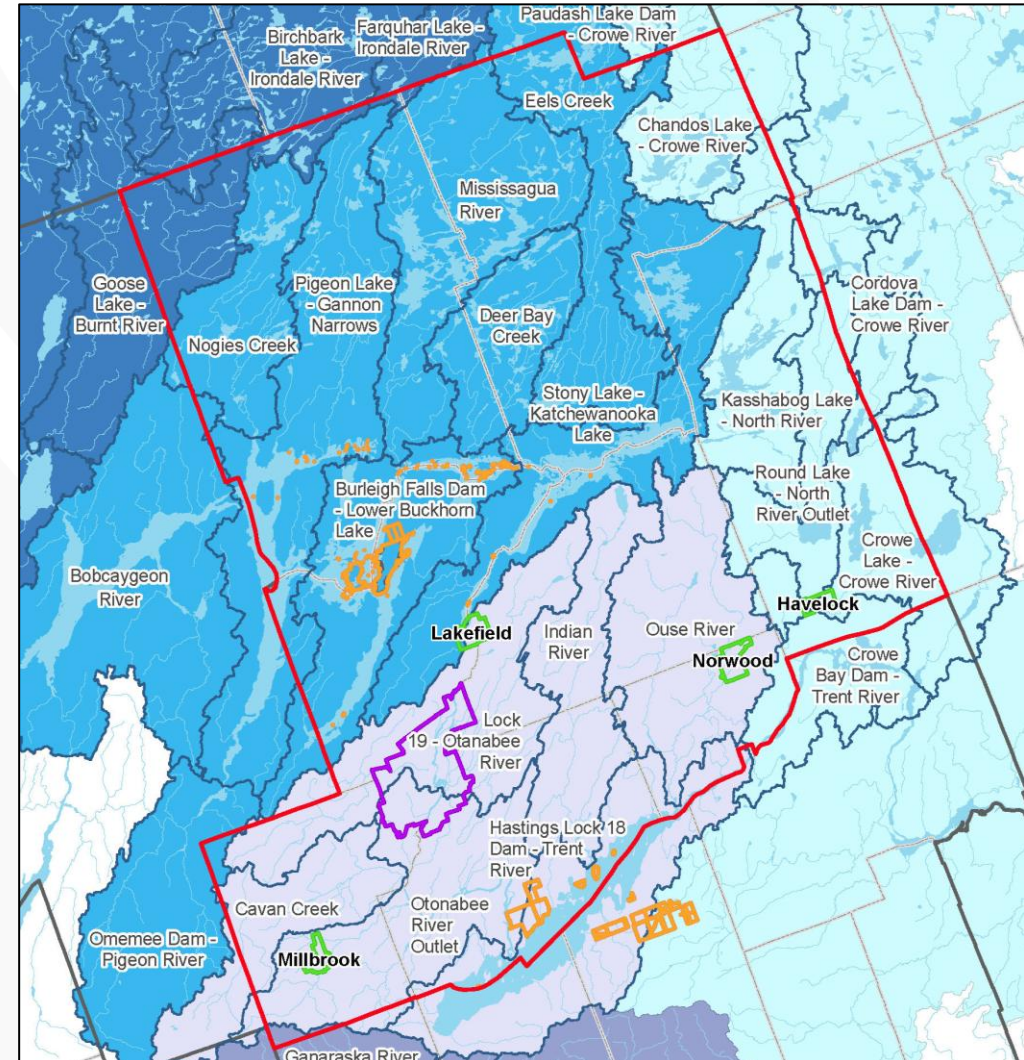
- Strong support for lake shoreline protection, restoration of shoreline health, and maintaining and improving water quality (including shoreline naturalization / health, septic health, etc.).



# Study Area: Tertiary and Quaternary Watersheds

Study Area is the entire County which includes

- Five (5) tertiary watersheds:
  - Gull River
  - Kawartha Lakes
  - North Lake Ontario Shoreline
  - Otonabee River
  - Trent River – Crowe River
- 26 quaternary watersheds
- Recently amalgamated Eastern Lake Ontario Conservation Authority covering the southern half of the study area (formerly four agencies)
- Northern half under the jurisdiction of the Ministry of Natural Resources (MNR) Districts of Bancroft and Peterborough



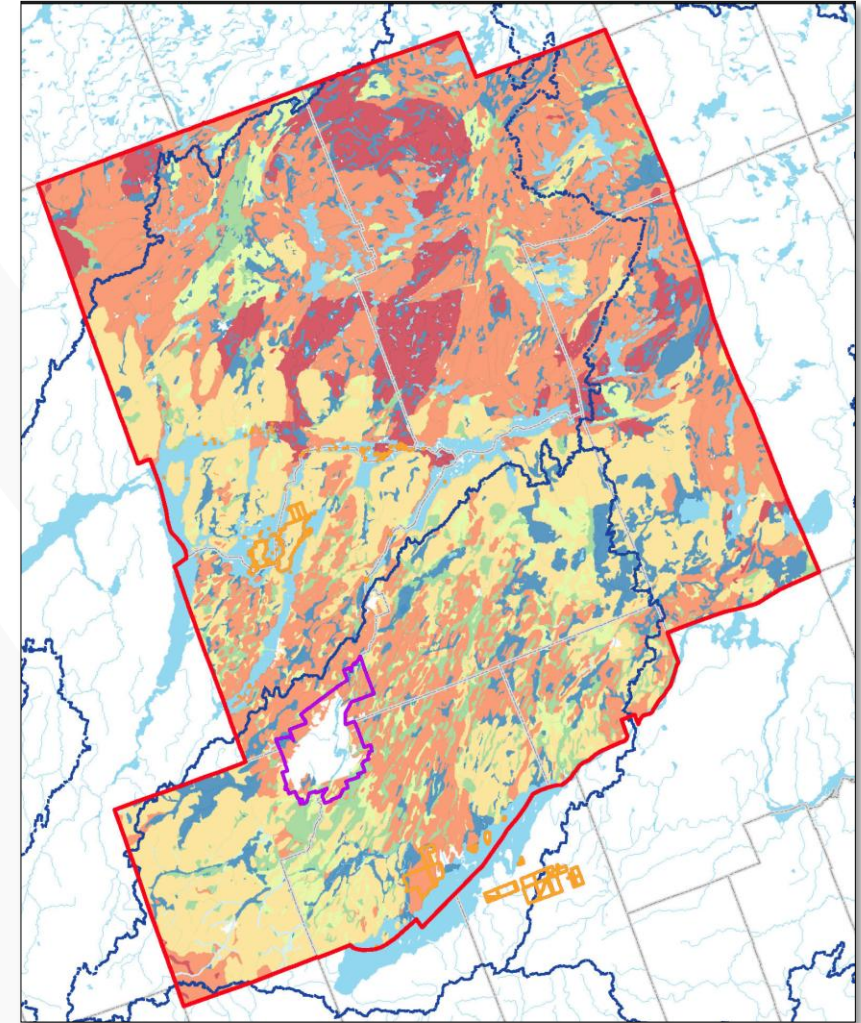
Tertiary and quaternary watersheds (Montrose Environmental)

# Overview of Watershed Plan Contents: Volume 1

## VOLUME 1: CHARACTERIZATION

- Background review findings and data gaps
- County-wide and for each tertiary watershed in the County:
  - Climate
  - Physiography, slopes and soils
  - Land use covers and growth areas
  - Drainage areas
  - Water monitoring (ground and surface)
  - Hydrogeologic conditions
    - Hydrostratigraphic units, mean depth to water table, well records, water quality
  - Natural hazards
  - Aquatic and terrestrial features and areas
    - Watercourses and thermal conditions, wetlands, woodlands, Areas of Natural and Scientific Interest, Species at Risk

PLUS Figures 1 to 28 and technical appendices

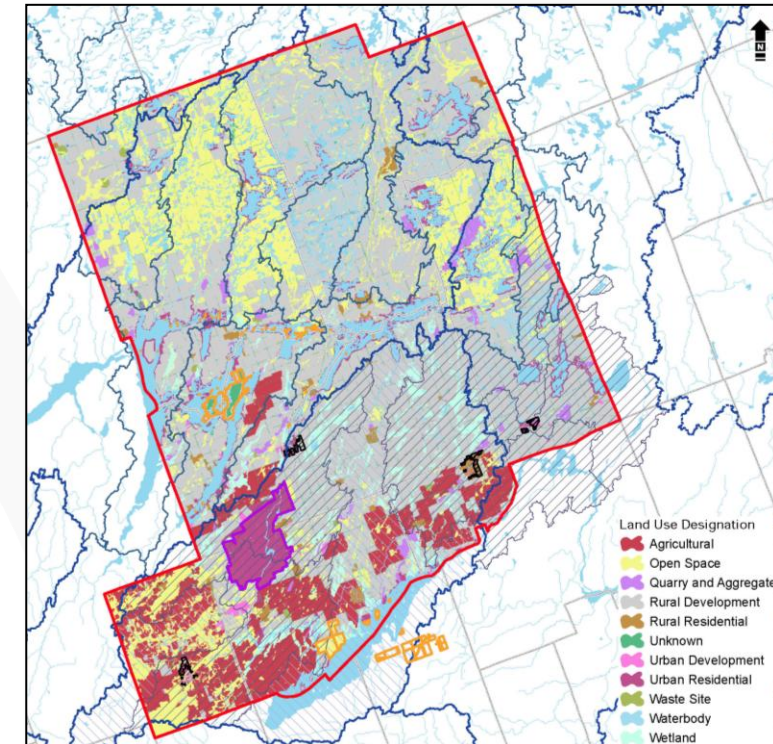


Soil drainage classes – red very rapid, yellow moderate, green very poor  
(Montrose Environmental)

# Overview of Watershed Plan Contents: Volume 2

## VOLUME 2: PLANNING & MANAGEMENT GUIDANCE

- Planning context
- Vision, goals and objectives
- Natural Heritage System and Water Resource System identification guidance
- Water quantity and quality management, planning for climate change, natural hazard management guidance
- Land use impact and cumulative impact assessment guidance
- Prioritizing and scoping future subwatershed studies guidance
- Monitoring guidance
- Opportunities for improving Official Plan policies
- Opportunities for enhancing outreach and stewardship



Land use cover types  
(Montrose Environmental)

PLUS Figures 29 to 47



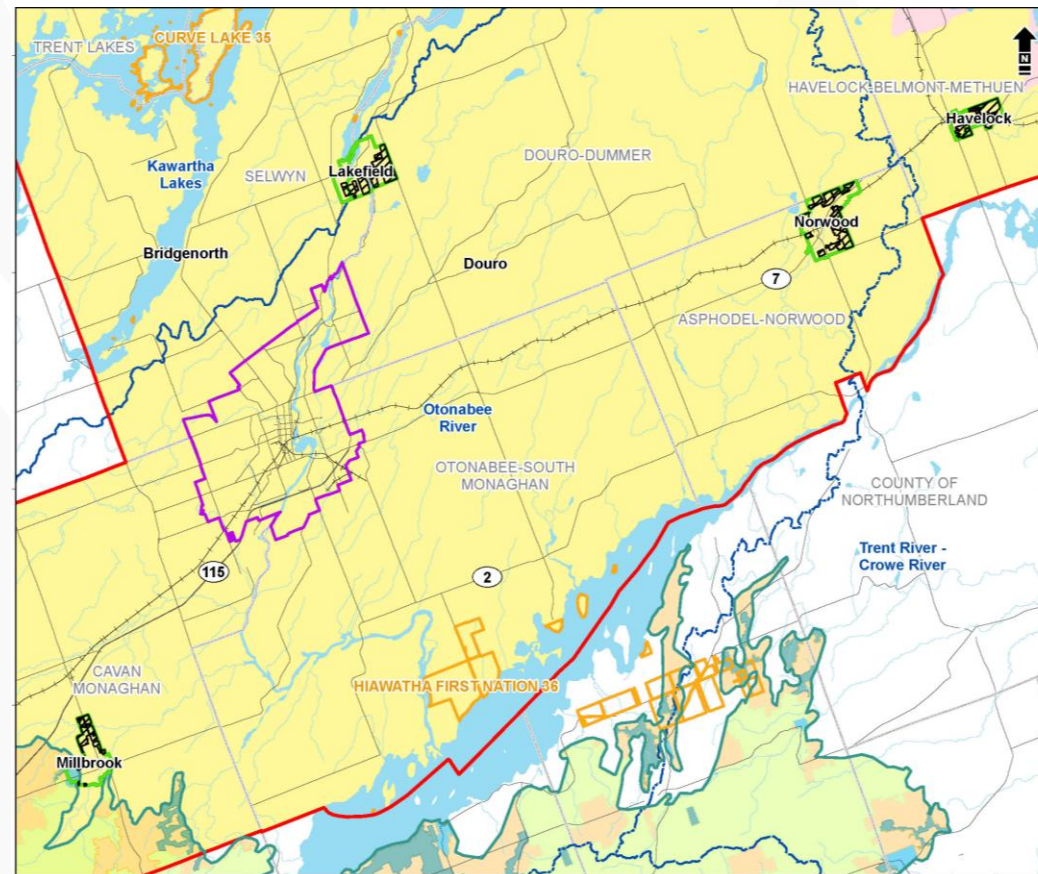
## 3. Planning Context

# Planning Context

Key guiding strategies, policies, acts and plans

- Provincial Planning Statement (2024)
- Oak Ridges Moraine Conservation Plan (2017) (only applicable for Millbrook growth area)
- Conservation Authorities Act
- Source Water Protection Plans
  - Trent Conservation Coalition Source Protection Region
- Peterborough County
  - Strategic Plan (2023-2026)
  - Official Plan (2025 consolidation)
  - Urban Growth Study (2022)

Note: City of Peterborough excluded as a separate single tier municipality.

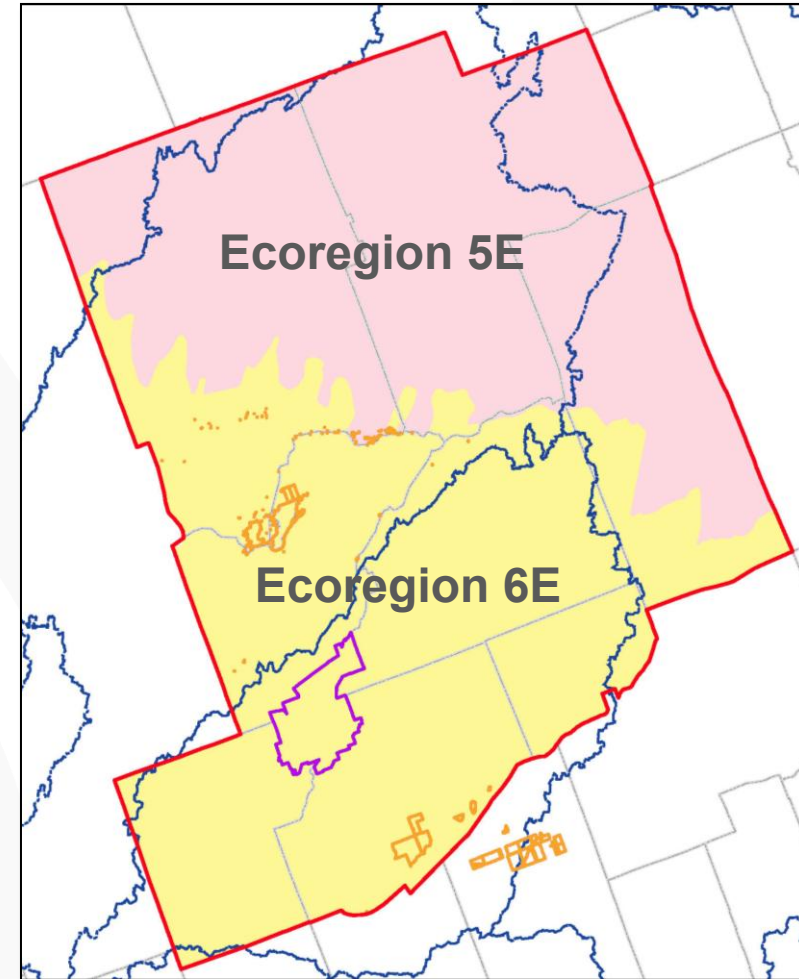


Future growth areas shown in Ecoregion 6E with extent of Oak Ridges Moraine Conservation Plan in green (Montrose Environmental)

# Provincial Planning Statement (2024)

Requires large and fast-growing municipalities to:

- Undertake watershed planning for municipal services
- Collaborate with Conservation Authorities to identify hazardous lands/sites and manage development
- Undertake planning in accordance with the applicable natural heritage system (NHS), water resource system (WRS), and natural hazard policies including:
  - Maintaining the diversity and connectivity of natural features in an area for the long term
  - Avoiding and mitigating potential negative impacts
  - Identifying the WRS and NHS, and maintaining linkages and functions within and between them
  - Protecting both drinking water supplies and vulnerable surface and/or groundwater resources, and
  - Ensuring efficient and sustainable land use planning.



Ecoregions 5E (north) and 6E (south) (Montrose Environmental)



# Provincial Watershed Planning Requirement and Guidance

Key components to consider:

1. Surface and groundwater quantity (i.e., water budgets, conservation plans)
2. Surface and groundwater quality (i.e., nutrient loading, assimilative capacity assessments)
3. Natural hazards (e.g., erosion, flooding)
4. Climate change
5. Interconnections with natural heritage features / areas and systems, and the benefits of green infrastructure
6. Cumulative impacts of land use changes, and
7. Analysis of land use and management scenarios.

Source: *Draft Watershed Planning in Ontario: Guidance for land-use planning authorities (2018)*



# About the County Official Plan (April 2025)

New Official Plan to set the vision and direction for growth and development to 2051.

Commits the County and local Municipalities to implementing a watershed-based approach to land use planning and water management.

Currently with the Province awaiting Ministerial approval.

## Official Plan Goals

- Recognize the importance of **consulting with First Nations** on planning matters that may affect their constitutional or treaty rights
- **Protect rural lands and natural heritage features** by directing new development and employment uses primarily to settlement areas
- **Encourage new development that is sustainable**, makes the most of existing services and infrastructure, and reflects the local character



Rotary Greenway Boardwalk  
(Credit: Township of Selwyn)



# Select Policies from the County Official Plan (April 2025)

---

## Section 5.9 Healthy Communities

- *The County shall prepare for the impacts of a changing climate through protection of an Agricultural System, Natural Heritage System and Water Resource System in accordance with the policies of this Plan.*

## Section 6.2 Natural Heritage System Approach and Overlay

- *The development of a Natural Heritage System may build on existing knowledge and studies already completed for the area, and will be applied at a minimum, in Ecoregion 6E in the County.*

## Section 9: Water Resources

- *Integrating land management and the protection of water resource systems including key hydrologic features, key hydrologic areas, shorelines and associated natural heritage features allows for the continuance of a healthy environment.*



# Peterborough County Urban Growth Analysis (Hemson 2022)

## Key findings

- Population 63,800 (2021) to 82,000 by 2051
- Employment base 16,000 (2021) projected to 26,000 by 2051
- Most growth anticipated in the Townships of Cavan Monaghan, Selwyn and Asphodel-Norwood
- Recommends growth areas build on the four existing urban settlements that are already serviced:
  - Lakefield (Twp. of Selwyn)
  - Millbrook (Twp. of Cavan Monaghan)
  - Norwood (Twp. of Asphodel-Norwood)
  - Havelock (Twp. of Havelock-Belmont-Methuen)

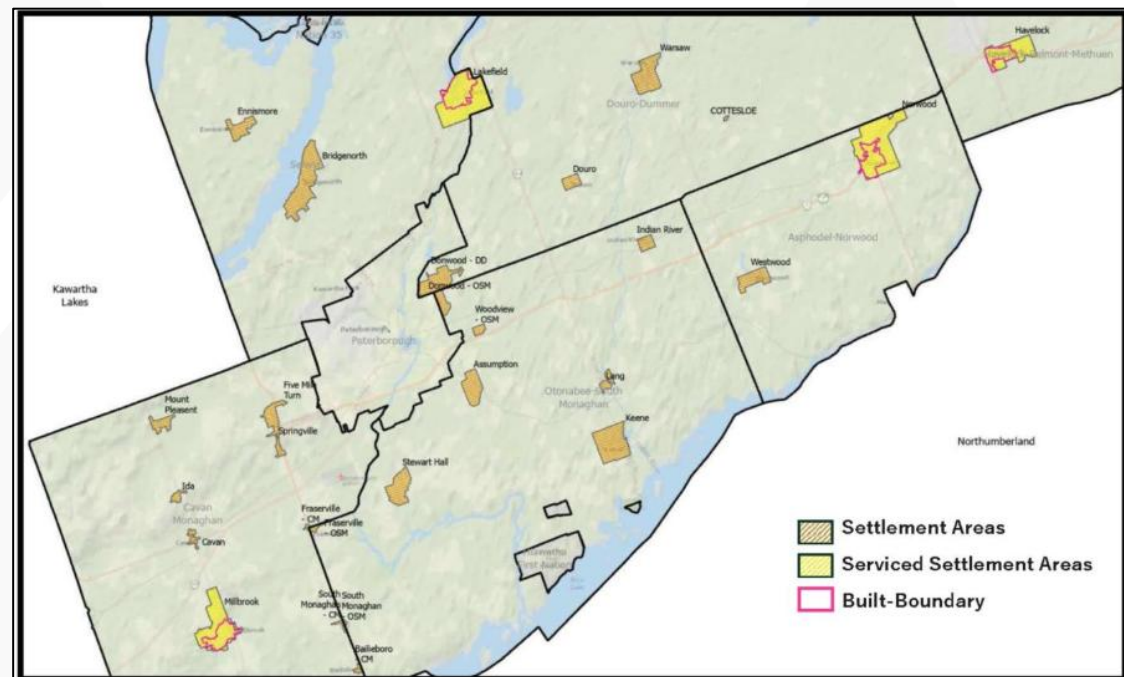


Illustration of the serviced settlement areas in the County  
(Source: Hemson 2022)



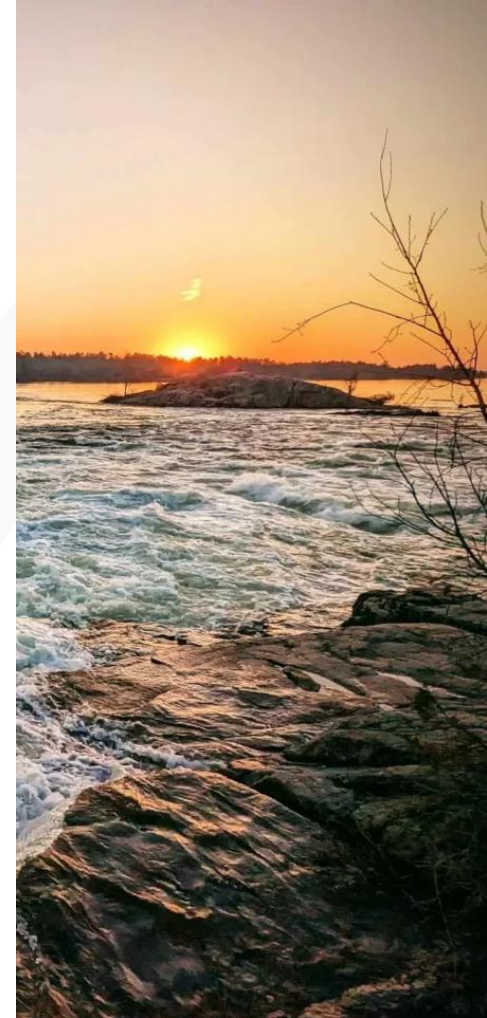
## 4. Watershed Plan Framework

# "DRAFT" Vision Statement

**Peterborough County's watersheds — spanning the Canadian Shield and Great Lakes–St. Lawrence Lowlands — are the ecological and cultural foundation of the region.**

**In partnership with the Williams Treaties First Nations, the local Municipalities and the community, the County envisions climate-resilient watersheds where:**

- **Forests, wetlands, aquifers, and living shorelines' function are parts of healthy natural systems**
- **Growth considers and respects hydrologic and ecological functions**
- **Groundwater and surface water are managed at their sources, and**
- **Collaborative stewardship promotes clean and abundant water today and for the future.**



**Burleigh Falls**  
(Credit: Parks Ontario)



# "DRAFT" Guiding Principles

1. Watershed-based Planning
2. Building Climate Resilience
3. Prioritizing Shoreline Protection
4. Surface Water–Groundwater Integration
5. Reconciliation and Indigenous Partnership
6. Biodiversity and Ecological Connectivity
7. Consider Cumulative Impacts
8. Adaptive Management and Shared Accountability



Credit: Kawarthas Kayaking



# "DRAFT" Goals and Objectives

---

- 1. Support Identification of a Natural Heritage System (NHS) and Water Resource System (WRS)**
  - Complete the technical work to identify NHS and WRS
  - Identify, maintain and restore linkages between the WRS and NHS
  - Map an NHS and WRS for the County's Official Plan
- 2. Protect Water Quality and Water Quantity**
  - Develop water budgets for respective systems (from the tertiary watershed scale)
- 3. Adaptively Manage and Monitor the Watershed**
  - Work with partners to develop a watershed-based monitoring program
  - Scope future priorities and studies
- 4. Ensure Land Use Planning is Informed by Watershed Planning**
  - Review growth scenarios
  - Update the Official Plan with a "watershed-based" approach (aligned with PPS)
  - Support the use and integration of "low impact development" measures



# "DRAFT" Goals and Objectives (continued)

## 5. Protect Human Health and Safety and the Natural Environment

- Work with local conservation authorities/agencies to manage natural hazards
- Account for climate change
- Consider cumulative impacts

## 6. Engage Communities to Advance the Watershed Plan Vision

- Enhance collaboration with local First Nations
- Enhance communication and collaboration with local Municipalities, agencies and non-governmental organizations
- Support watershed-based outreach and stewardship led by others



Credit: Parks Canada





## 5. Discussion Break – Part 1

# DISCUSSION BREAK

---

- Any questions about the background and planning context for this Watershed Plan?
- Any comments on the Draft Vision for this Watershed Plan?
- Any comments on the Draft Goals / Objectives for this Plan?



Credit: Parks Canada





## 6. Characterization: Focus on Growth Areas

# Future Growth Areas and Associated Watersheds

Quaternary watersheds (hatched in map) associated with the Future Growth Areas are, east to west:

Havelock (Twp. of Havelock-Belmont-Methuen)

- Crowe Lake – Crowe River
- Round Lake – North River
- Crowe Bay Dam – Trent River

Norwood (Twp. of Asphodel-Norwood)

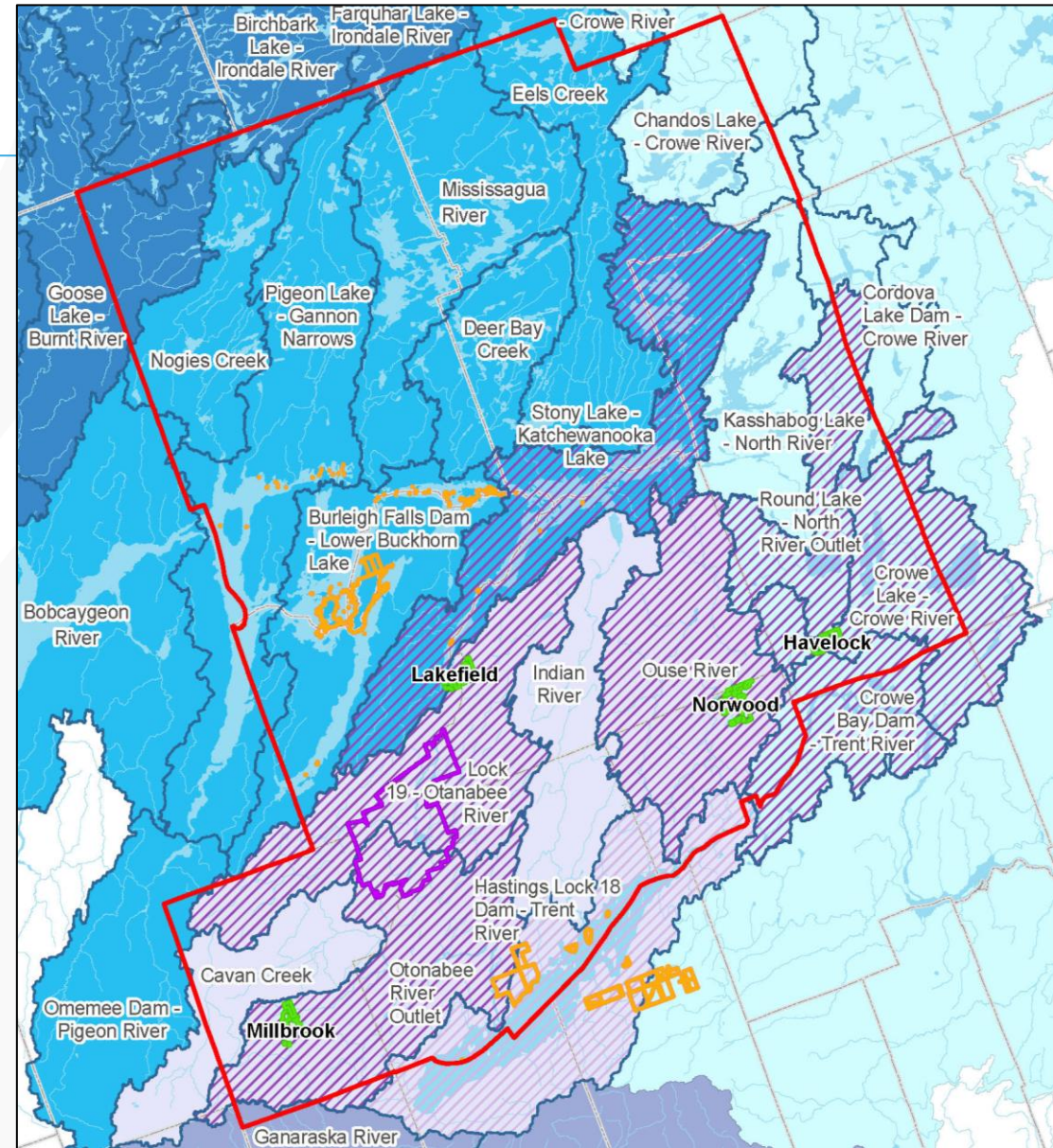
- Ouse River

Lakefield (Twp. of Selwyn)

- Lock 19 – Otonabee River
- Stony Lake – Katchewanooka

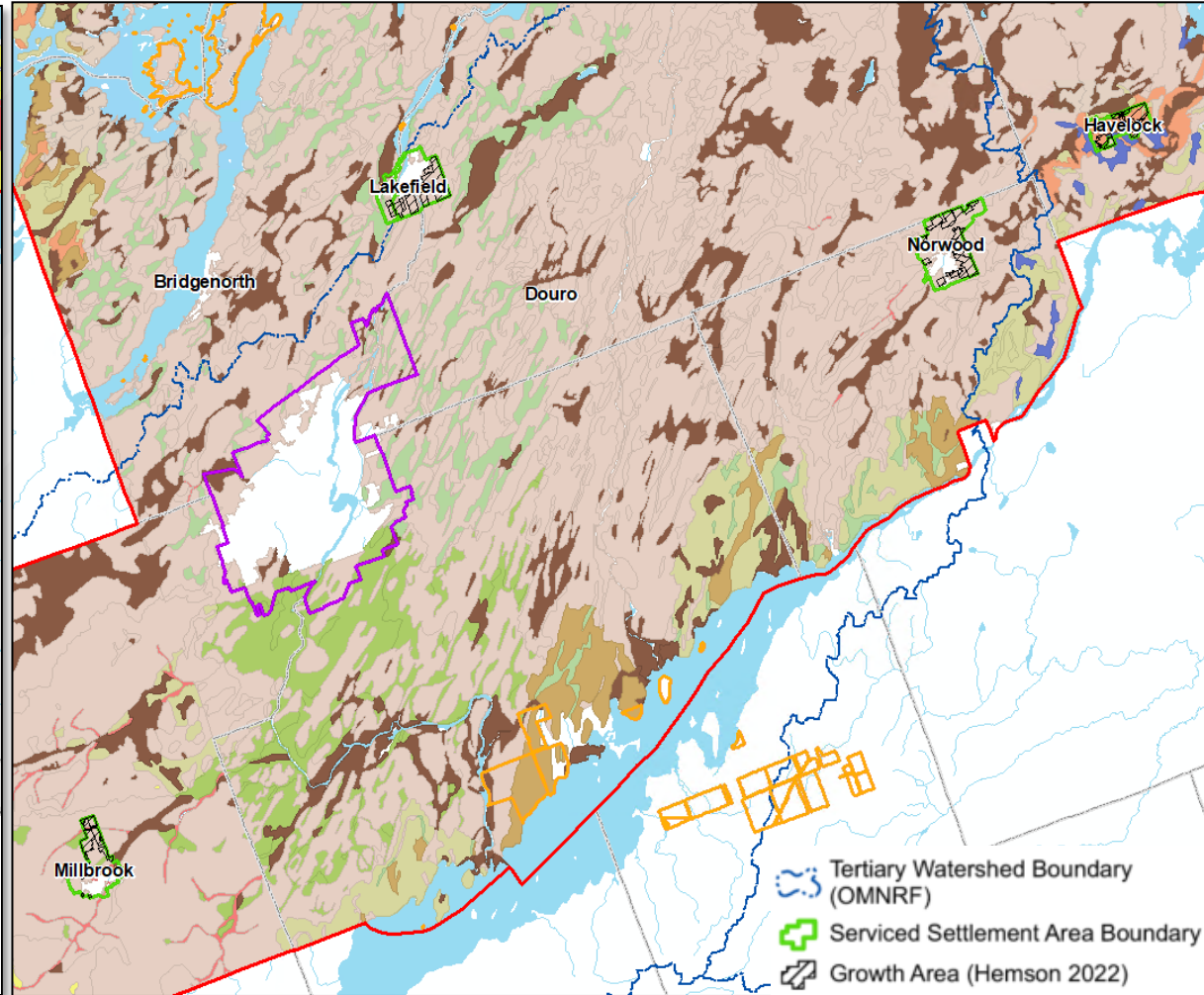
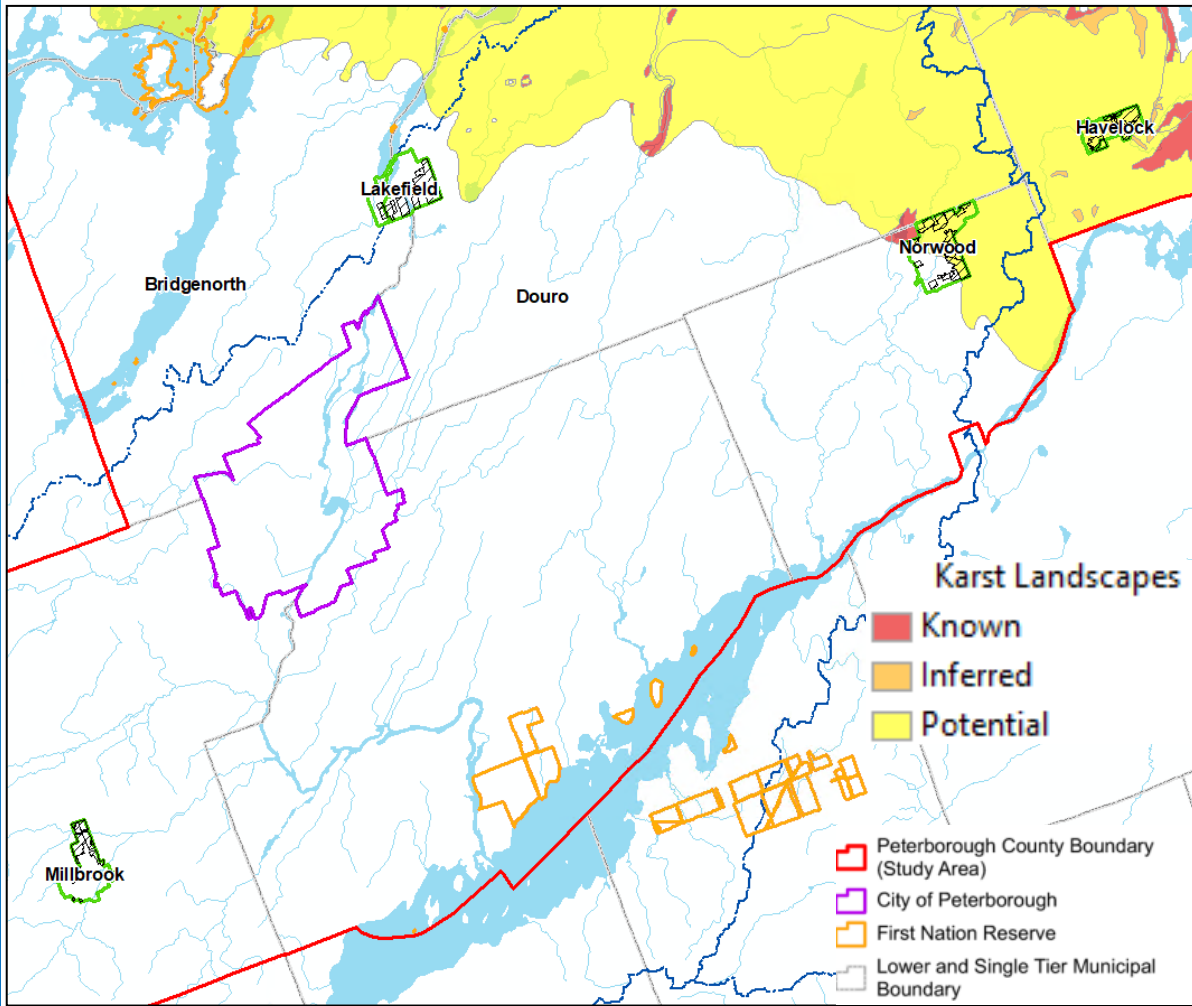
Millbrook (Twp. of Cavan Monaghan)

- Otonabee River Outlet



Quaternary watersheds associated with future growth areas (hatching)  
(Montrose Environmental)

# Geology and Soils



Bedrock – karst landscapes (Montrose Environmental)

Unstable soils (organic in dark brown) (Montrose Environmental)

# Hydrogeology: Groundwater Recharge and Source Water Protection

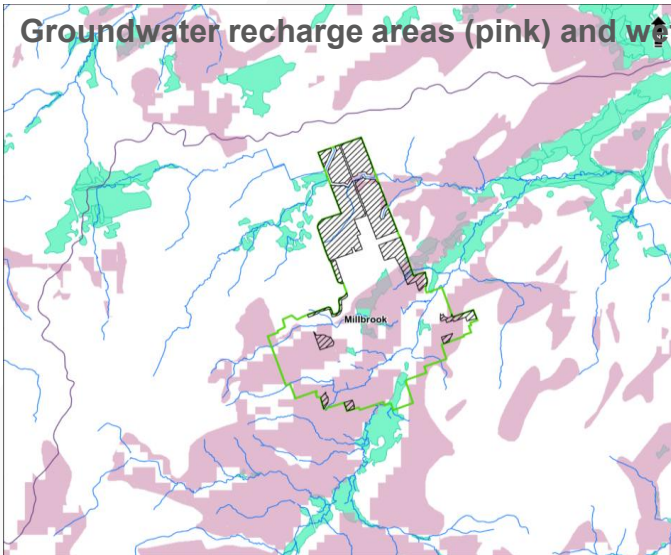
Key data sources:

- Significant Groundwater Recharge Areas (SGRA)
- Source Water Protection Areas

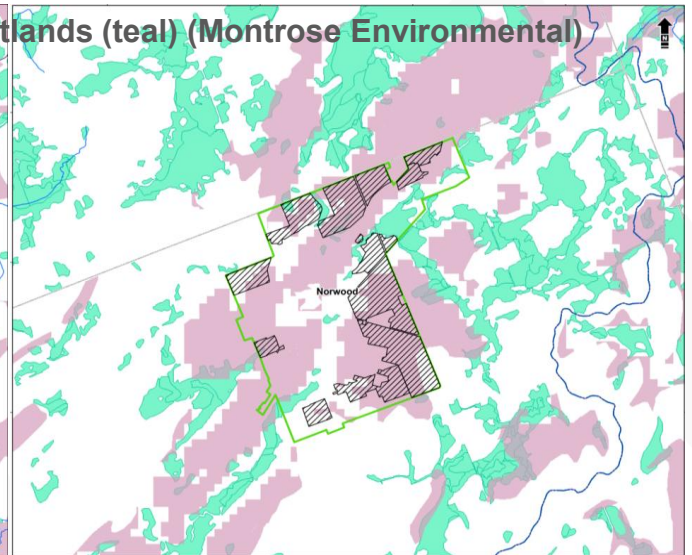
Key data gaps:

- Ecologically significant groundwater recharge areas (ESGRA)
- Static and dynamic (monitoring) overburden water levels (only for Lock 19 – Otonabee River)
- Overburden groundwater quality data

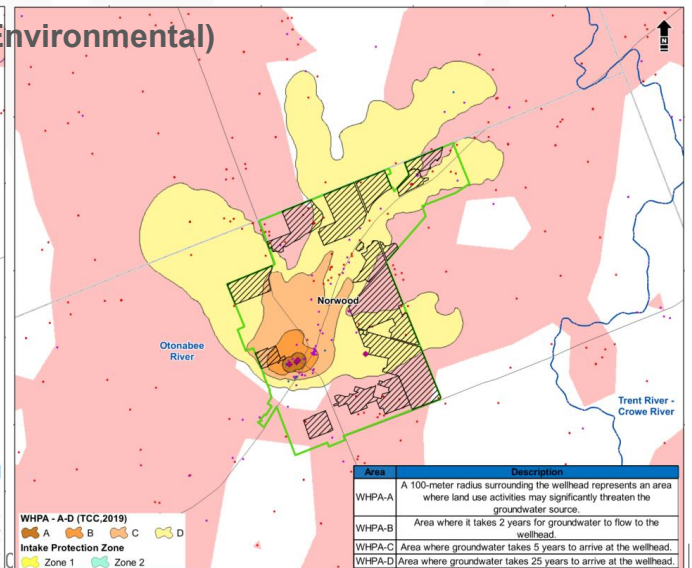
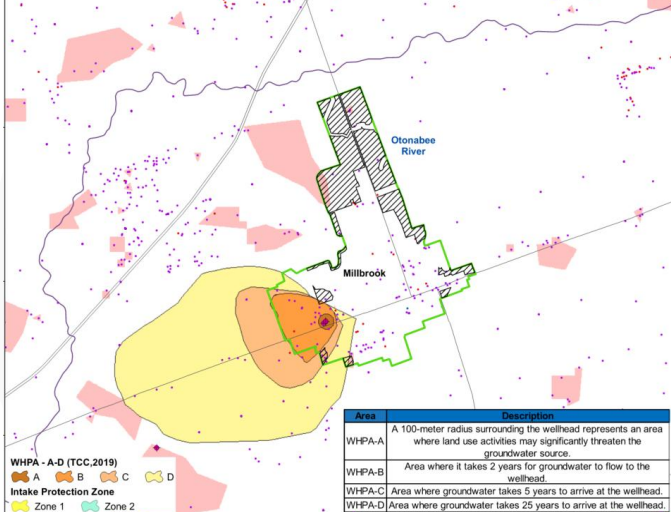
Millbrook Area



Norwood Area



Source water protection areas (Montrose Environmental)



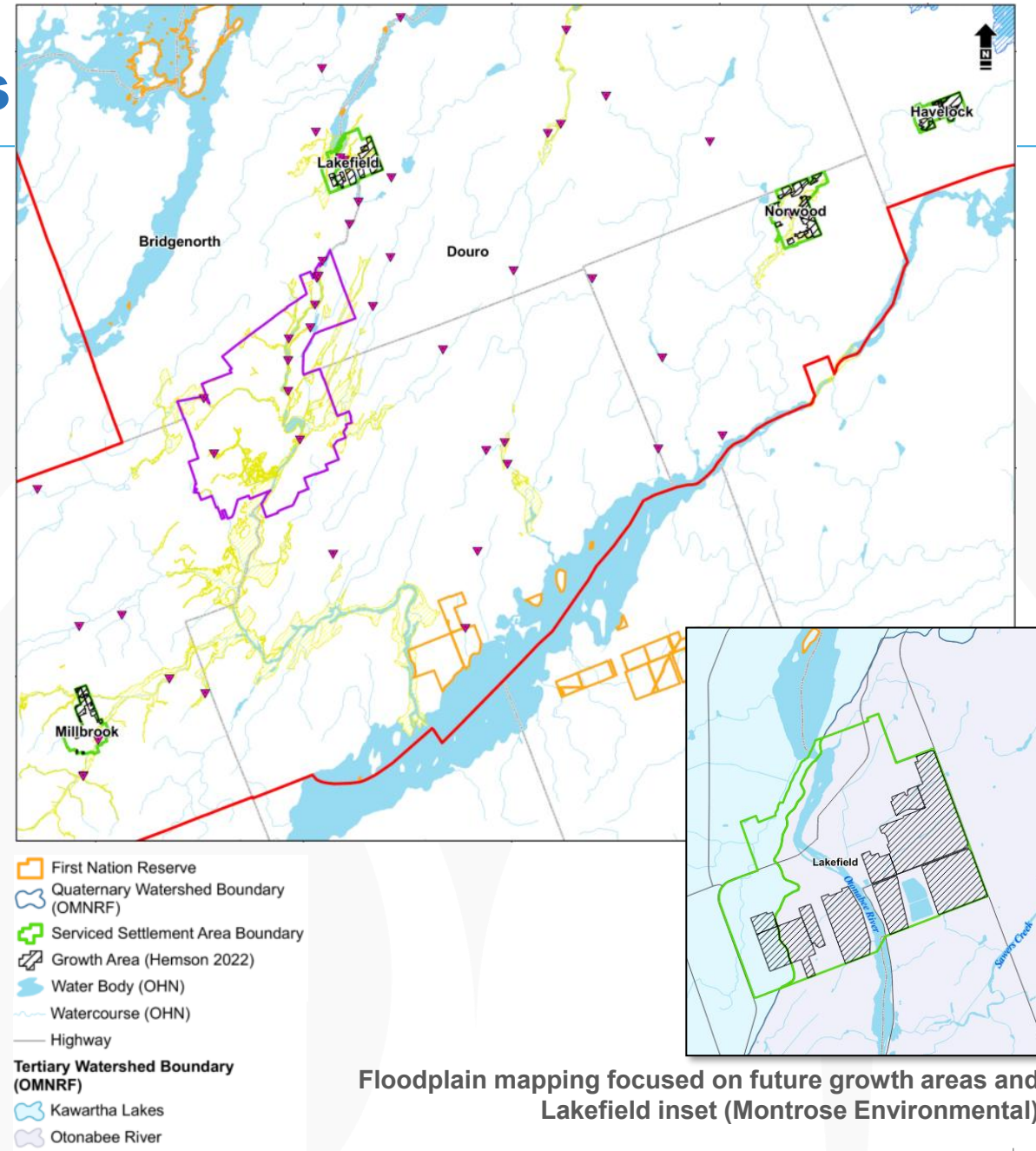
# Surface Water: Drainage Features and Natural Hazards

## Key data sources:

- Watercourses and waterbodies
- Approved flood hazard mapping for Otonabee River, Crowe Valley, and Kawartha Conservation
- Hydrologic models for Millbrook and Lakefield only

## Key data gaps:

- Streamflow and rainfall monitoring data
- Headwater Drainage Features (HDF)
- Constraint classifications for watercourses
- Erosion hazards, erosion hazard corridors, and erosion thresholds



Floodplain mapping focused on future growth areas and Lakefield inset (Montrose Environmental)

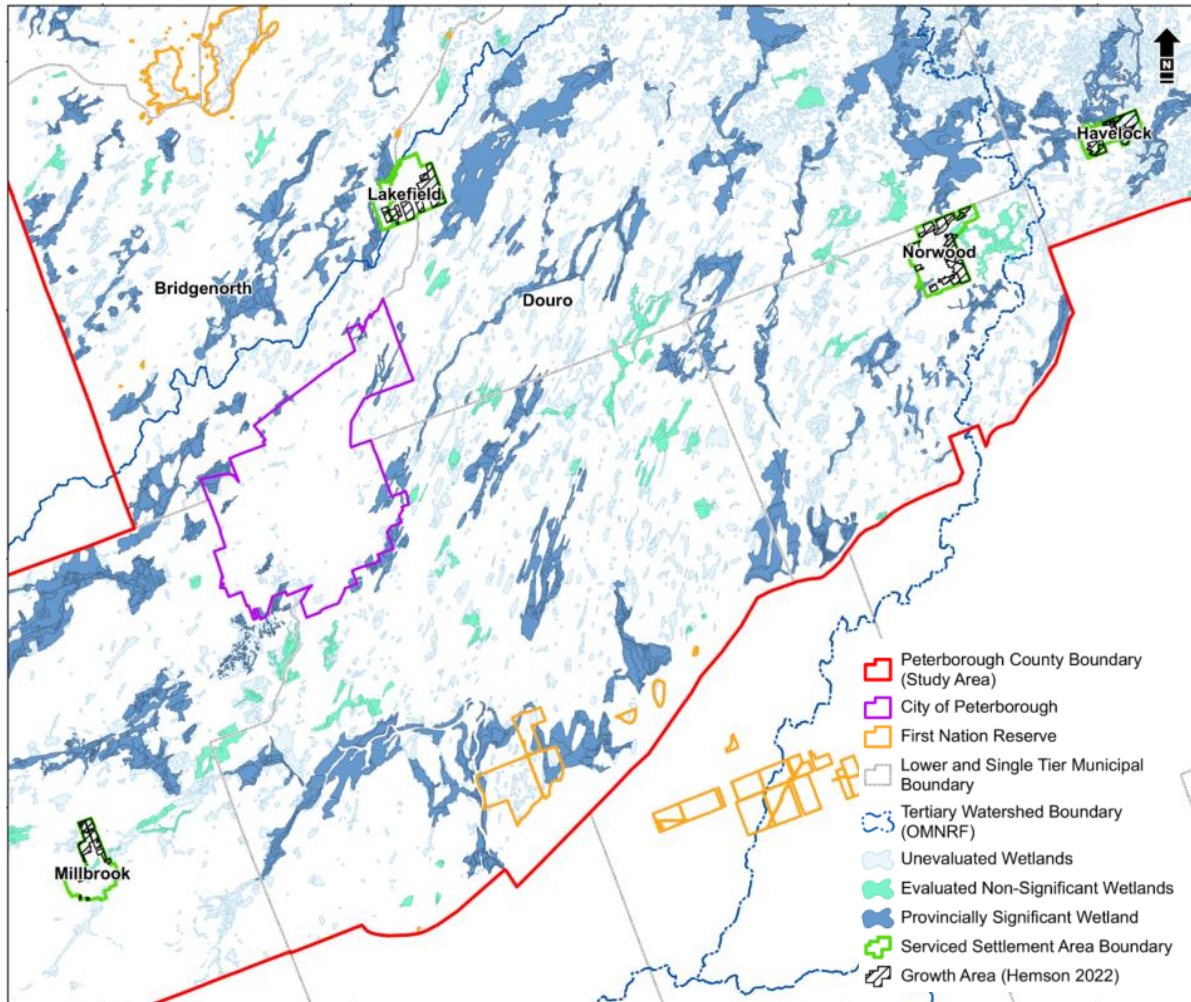


# Natural Heritage: Wetlands and Fish Habitat

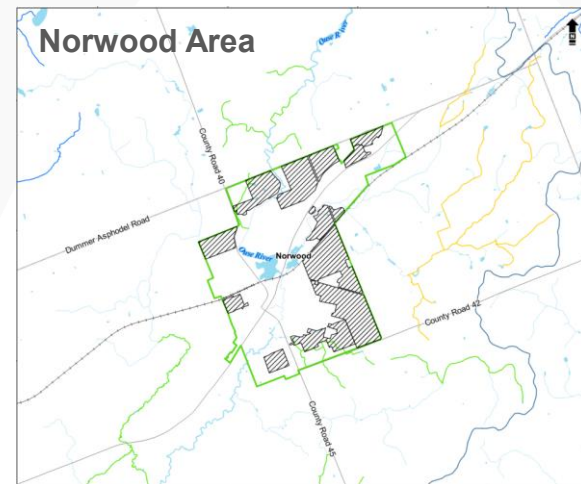
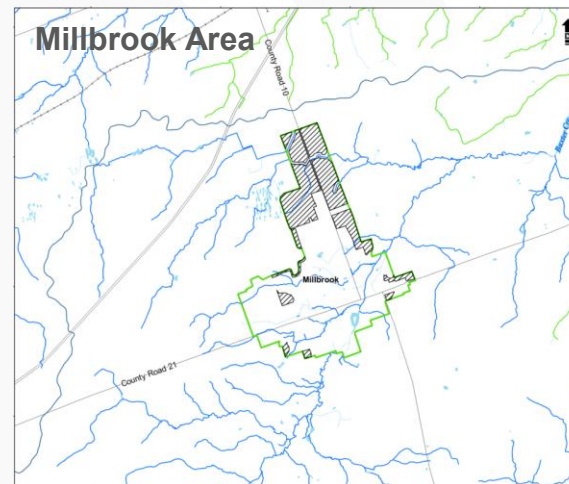
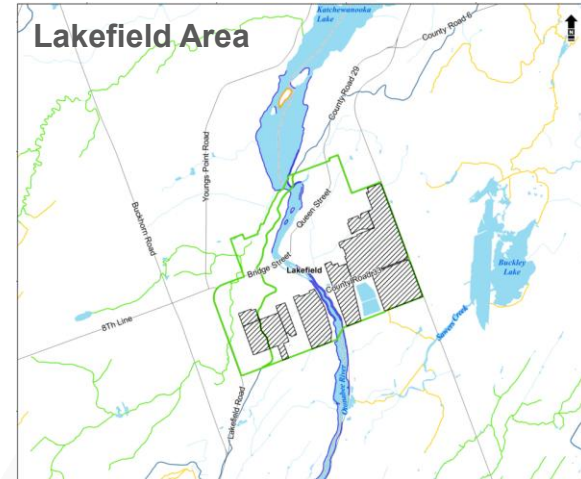
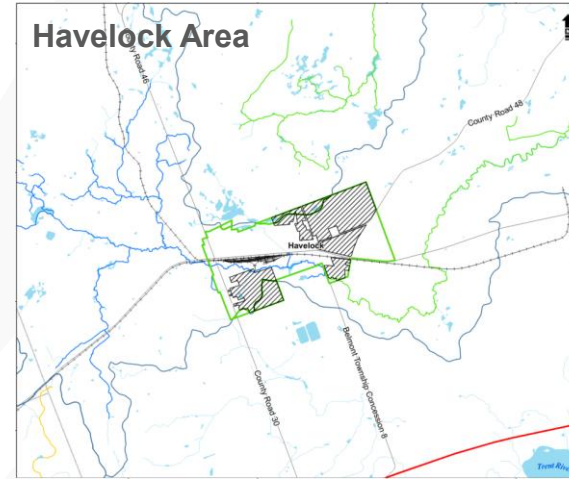
## Aquatic Resource Thermal Regime

- ~ Cold
- ~ Warm
- ~ Cool
- ~ Unknown

■ Fish Activity Area (Known Fish Spawning Areas)

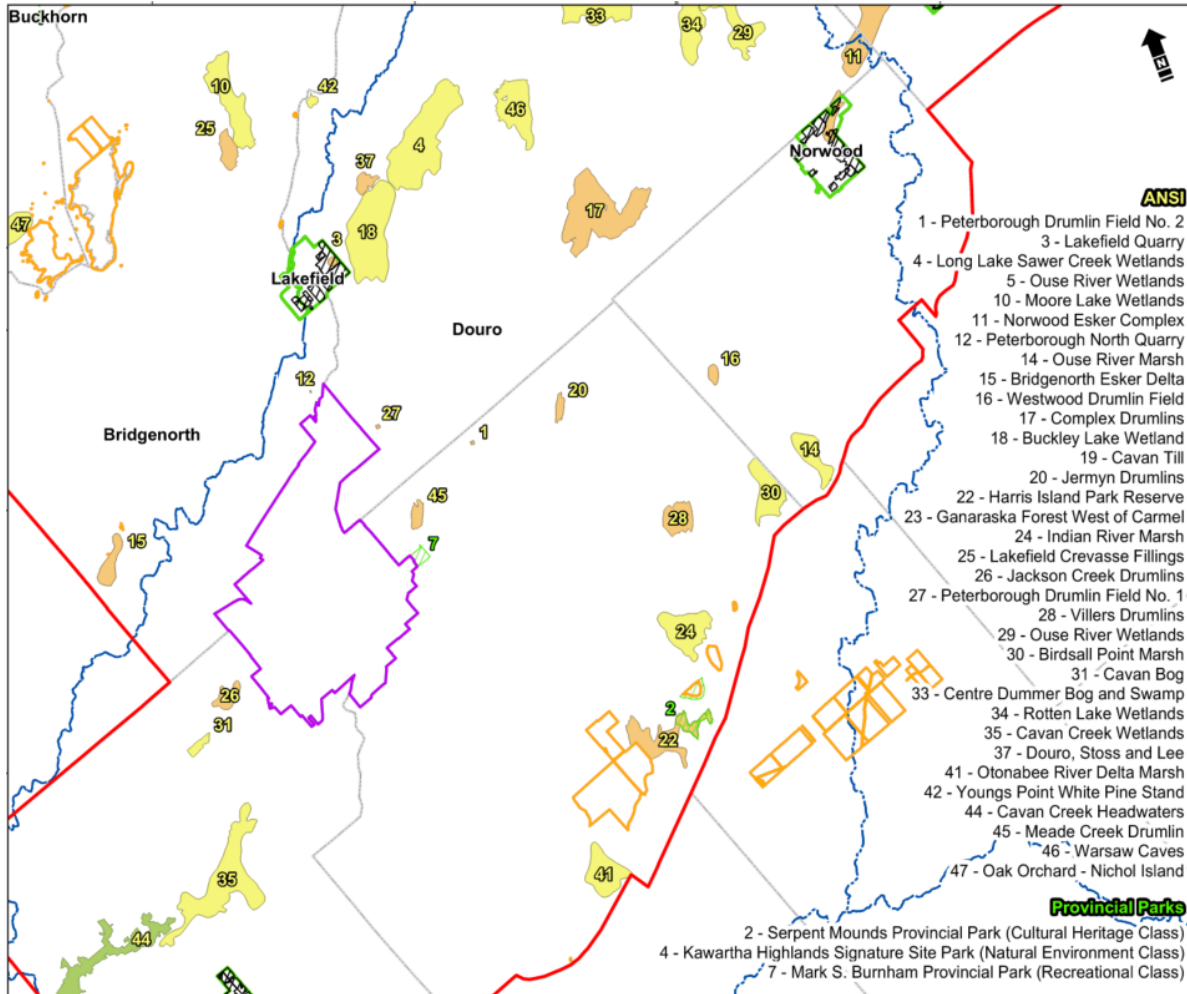


Provincially significant, evaluated non-significant, and unevaluated wetlands (Montrose Environmental)

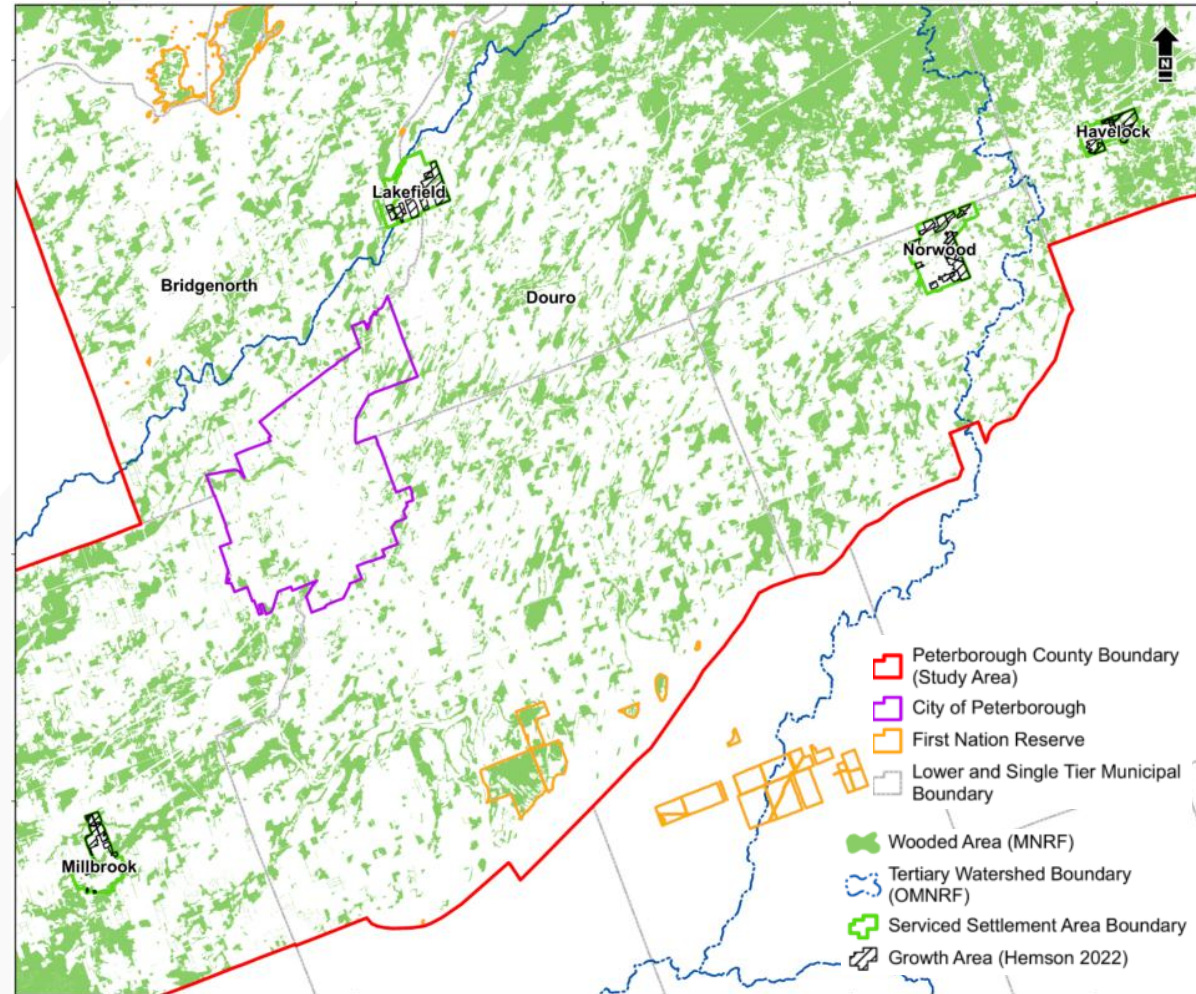


Fish habitat and fish activity areas focused on Future Growth Areas (Montrose Environmental)

# Natural Heritage: ANSI, Parks and Woodland Cover



**Areas of Natural and Scientific Interest  
(Montrose Environmental)**



**Mapped Woodland Cover  
(Montrose Environmental)**

- Provincial Park
- ANSI, Earth Science
- ANSI, Life Science
- Candidate ANSI, Life Science

# Key Natural Heritage Gaps

2018: Provincial NHS mapped



2020: Growth Plan requires adoption of NHS



2022: County provided refined NHS to Province



2024: New PPS replaces Growth Plan requirements, with no Provincial NHS



2025: County provides further refined Official Plan; mapping of NHS deferred

## Key Gaps - Natural Hazards:

- Erosion hazard mapping\*\*
- Floodplain mapping outside Millbrook and Lakefield)\*\*

## Key Gaps - Natural Heritage, for Ecoregion 6E in particular:

- Ecological Land Classification (ELC) mapping\*\*
- Fish habitat (e.g., habitat type confirmation)\*\*
- Significant Woodland evaluations
- Significant Wildlife Habitat assessments\*\*
- Significant Valleyland evaluations
- Confirmation of habitat for Endangered / Threatened Species\*\*
- Determination of ecological linkages\*\*

\*\*Also gaps for Ecoregion 5E





## 7. Watershed Planning and Management Guidance

## Plan focuses on Guidance for ...

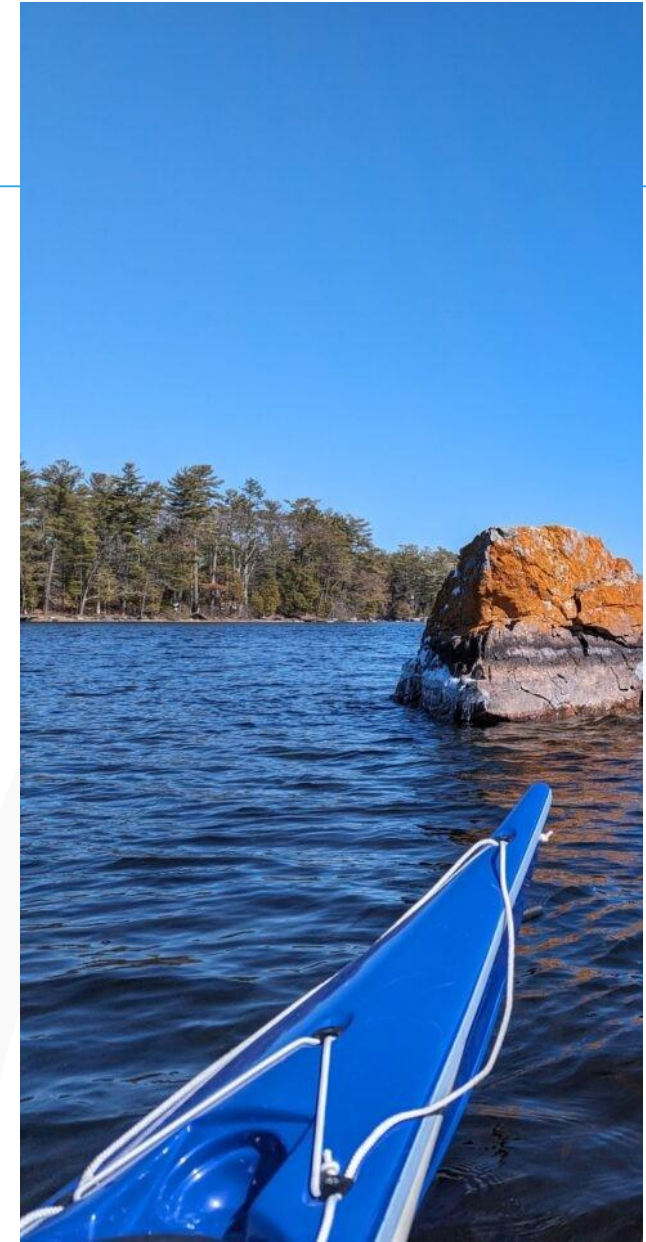
---

Scoping future Subwatershed Studies (Vol. 2, Section 7.2)

Guidance for Official Plan Policy Updates (Vol. 2, Section 9)

- Water Resource Policy Guidance
- Natural Heritage Policy Guidance
- Other Watershed-related Policy Guidance

Guidance for Local Outreach and Stewardship (Vol. 2, Section 10)



Credit: Kawarthas Kayaking



# DRAFT Guidance for Scoping Future Subwatershed Studies

---

It is recommended that:

- Detailed subwatershed studies (SWS) be completed for quaternary watersheds that interact meaningfully with the future growth areas prior to implementing Secondary Plans and comparable area-specific land use plans.
- Phased SWS include:
  - Phase 1: Subwatershed Characterization and Integration
  - Phase 2: Impact Assessment
  - Phase 3: Management, Implementation, Monitoring and Adaptive Management
  - Phase 4: Long-term Monitoring
- Area-specific NHS to be mapped as part of future SWS or more proactively as part of natural heritage mapping projects (building on this Watershed Plan and County NHS if available).



# DRAFT Official Plan Guidance: Water Resource Policies

Refer to and define the Water Resource System as including:

- **Key Hydrologic Features (KHF)**
  - permanent and intermittent streams
  - inland lakes and their littoral zones,
  - seepage areas and springs
  - wetlands
- **Key Hydrologic Areas (KHA)**
  - significant groundwater recharge areas (SGRA)
  - highly vulnerable aquifers (HVA)
  - significant surface water contribution areas

**Additional suggested components:**

- **Vegetation Protection Zones** associated with Key Hydrologic Features
- **Recharge / discharge areas** other than those captured as KHF and KHA
- **Ecologically Significant Groundwater Recharge Areas (ESGRA)**
- **Headwater Drainage Features (HDF)** (note mapping more feasible at subwatershed scale)

# DRAFT Official Plan Guidance: Water Resource Policies

## Further policy recommendations:

- Require maintenance of groundwater recharge rates between the existing and future land use condition (including through low impact development measures)
- Strengthen lake protection and shoreline policies across the County
- Include policy for spill flood hazards
- Require the identification and consideration of Headwater Drainage Features



Lock 21 (Credit: Parks Canada)



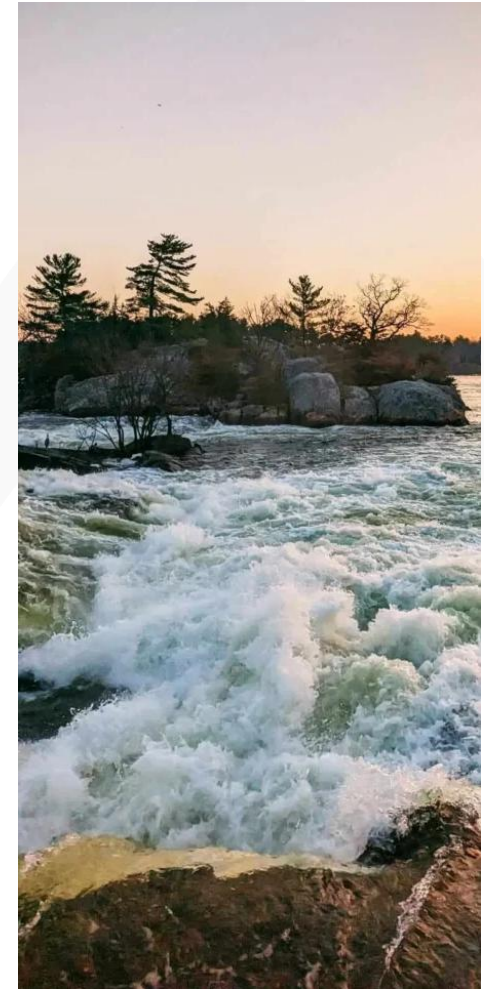
# DRAFT Official Plan Guidance: Natural Heritage Policies

## Advance the identification of an NHS:

- **Develop and implement an approach to NHS identification, including mapping, based on the most current and comprehensive data and mapping.**
- **Consider different approaches to identifying the NHS in Ecoregion 5E versus Ecoregion 6E.**

## Policy suggestions:

- **Clarify the distinction between Locally Significant Wetlands (LSW) and Non-significant Wetlands (NSW)**
- **Improve policies for significant woodlands with locally appropriate criteria**
- **Expand Natural Core Areas to include all terrestrial natural heritage features and areas considered “significant” (not just wetlands and watercourses)**
- **Linkages should be explicitly identified and (at least in Ecoregion 6E) mapped**
- **Add one or more policies supportive of stewardship**

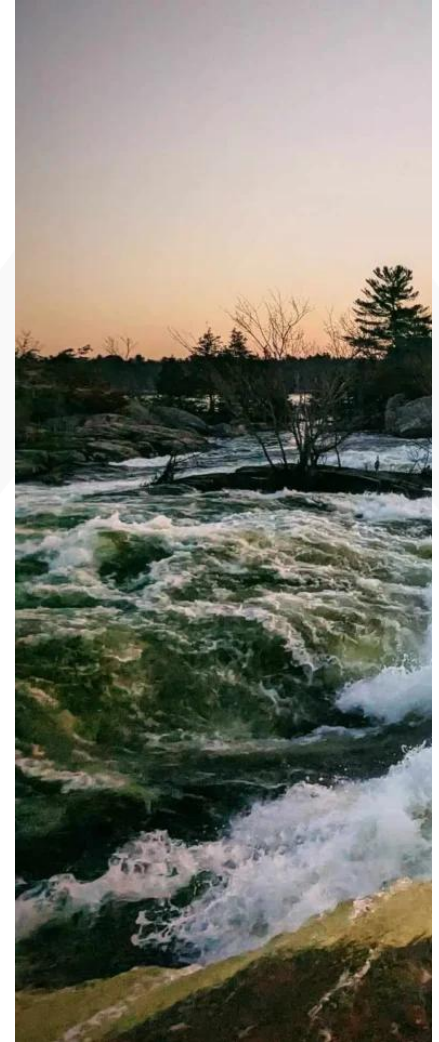


Credit: Parks Ontario



# DRAFT Official Plan Guidance: Other Watershed Policies

- **SUPPORT WATERSHED PLANNING:** Recognize the strategic need for both watershed and subwatershed plans, as well as other supporting technical studies, to advance sustainable land use planning in a context of climate change.
- **REQUIRE INTEGRATION:** Related to water and natural heritage resources functioning at various scales.
- **CONSIDER DAM REMOVALS:** where feasible
- **COMMIT TO MONITORING:** Support a strategic monitoring plan in partnership with the local Conservation Authority and others.
  - Include emerging monitoring requirements from the Province



Credit: Parks Ontario



# DRAFT Guidance for Local Stewardship: First Nations

It is recommended that the County engage in meaningful ways with interested local First Nations to confirm interest and try to identify mutually agreeable and beneficial opportunities to collaborate on implementation of this Watershed Plan.

Established mechanisms for collaboration include:

- The Technical Advisory Committee (TAC) for this Watershed Plan
- The Treaty 20–Greater Peterborough Area Community Economic Development Initiative (CEDI) (which included an Indigenous Tourism Working Group)



Credit: Hiawathas First Nation

# DRAFT Guidance for Local Stewardship: Community

It is recommended that the County engage with local organizations and associations proactively and opportunistically, as capacity and resources permit, to identify mutually agreeable and beneficial opportunities to collaborate on implementation of this Watershed Plan.

Examples identified through this Watershed Plan include:

- Baxter Creek Watershed Alliance (BCWA)
- Environment Council for Clear, Stony and White Lakes (ECCSWL)
- Kawartha Lake Stewards Association (KLSA)
- Lovesick Lake Association
- Municipality of Trent Lakes Environmental Advisory Committee (EAC) - Shoreline Sub-Committee
- Watersheds Canada
- Coalition for Equitable Water Flow (CEWF)
- Federation of Ontario Cottagers' Associations
- GreenUP
- Kawartha Conservation and Climate Partnerships
- Kawartha Land Trust (KLT)
- Ontario Woodlot Association
- Trent University, School of the Environment and Fleming College (e.g., water quality data)



## 8. DISCUSSION BREAK – Part 2

# DISCUSSION BREAK

---

Any comments on the draft planning guidance for:

- Water resources?
- Natural heritage resources?
- Other?



Mark S. Burnham Park (Credit: Parks Ontario)





## 9. Next Steps

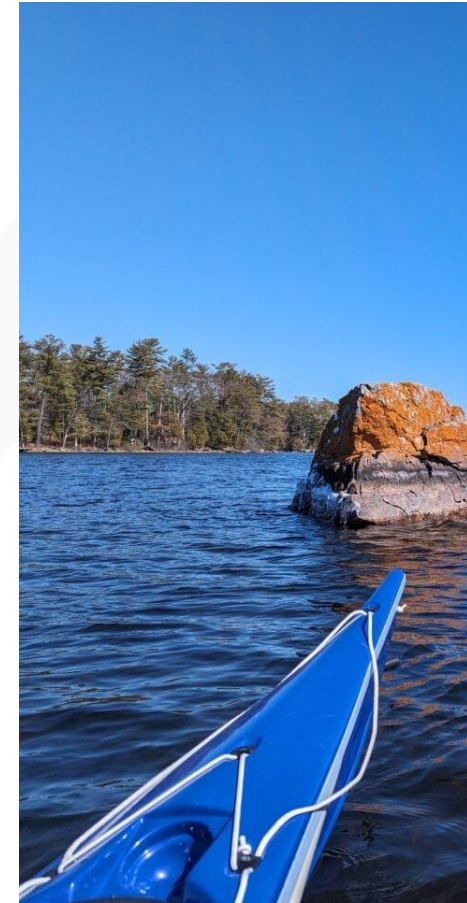
# Next Steps

Next steps for this project include:

1. Completing and summarizing the Phase 2/3 Engagement
2. Integrating feedback into finalization of the Watershed Plan
3. Coming back to the TAC and Council with the Final Watershed Plan

Key next steps for the County include:

1. Completing updates to its Official Plan following Ministerial approval, including advancing NHS and WRS mapping - building on the guidance in the Watershed Plan, and
2. Working with local Municipalities, Conservation Authorities and others to start to advance quaternary-scale / subwatershed studies in growth areas - building on the guidance in the Watershed Plan.



Credit: Kawarthas Kayaking



**Thank-you for your time.**

