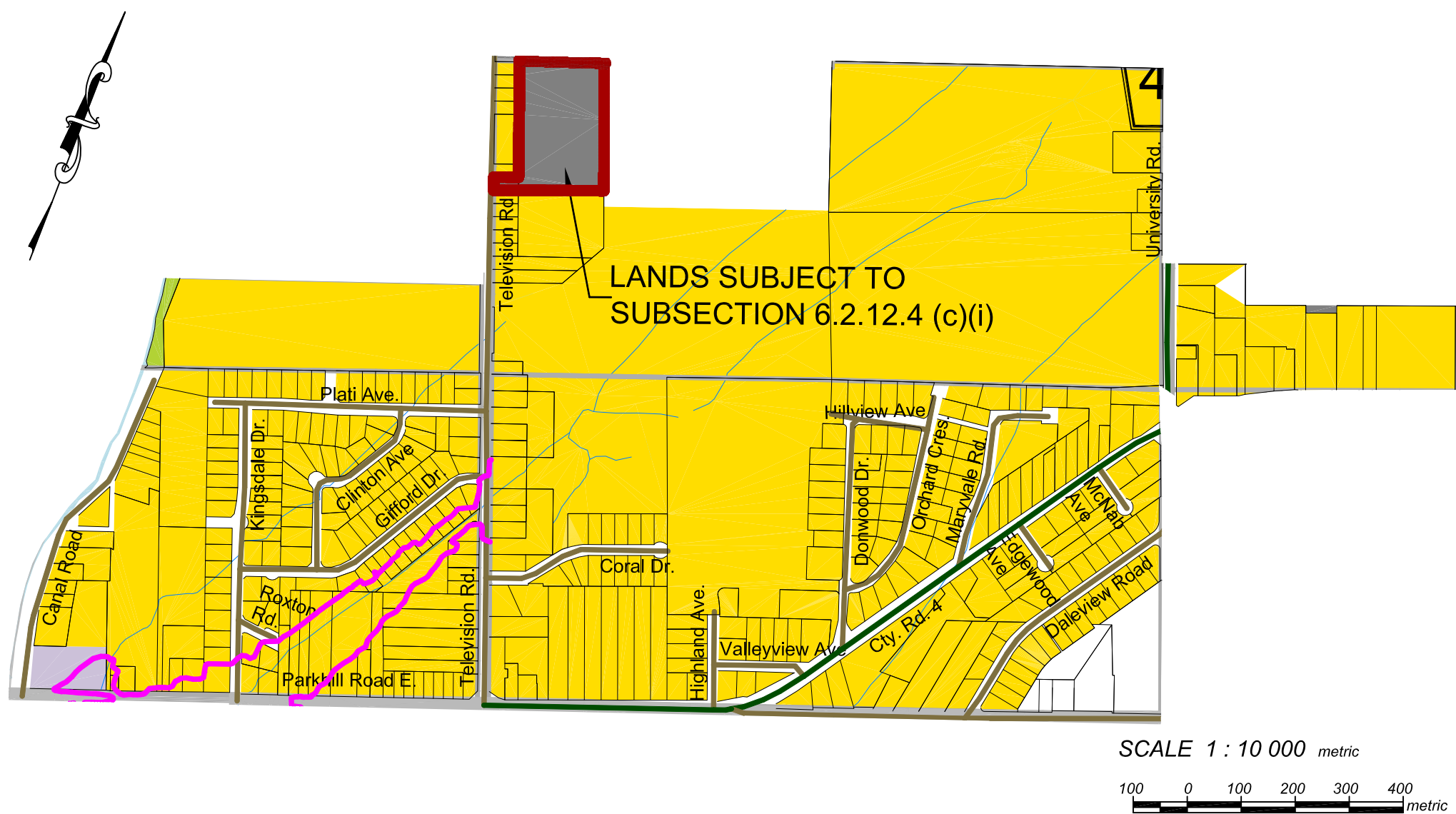
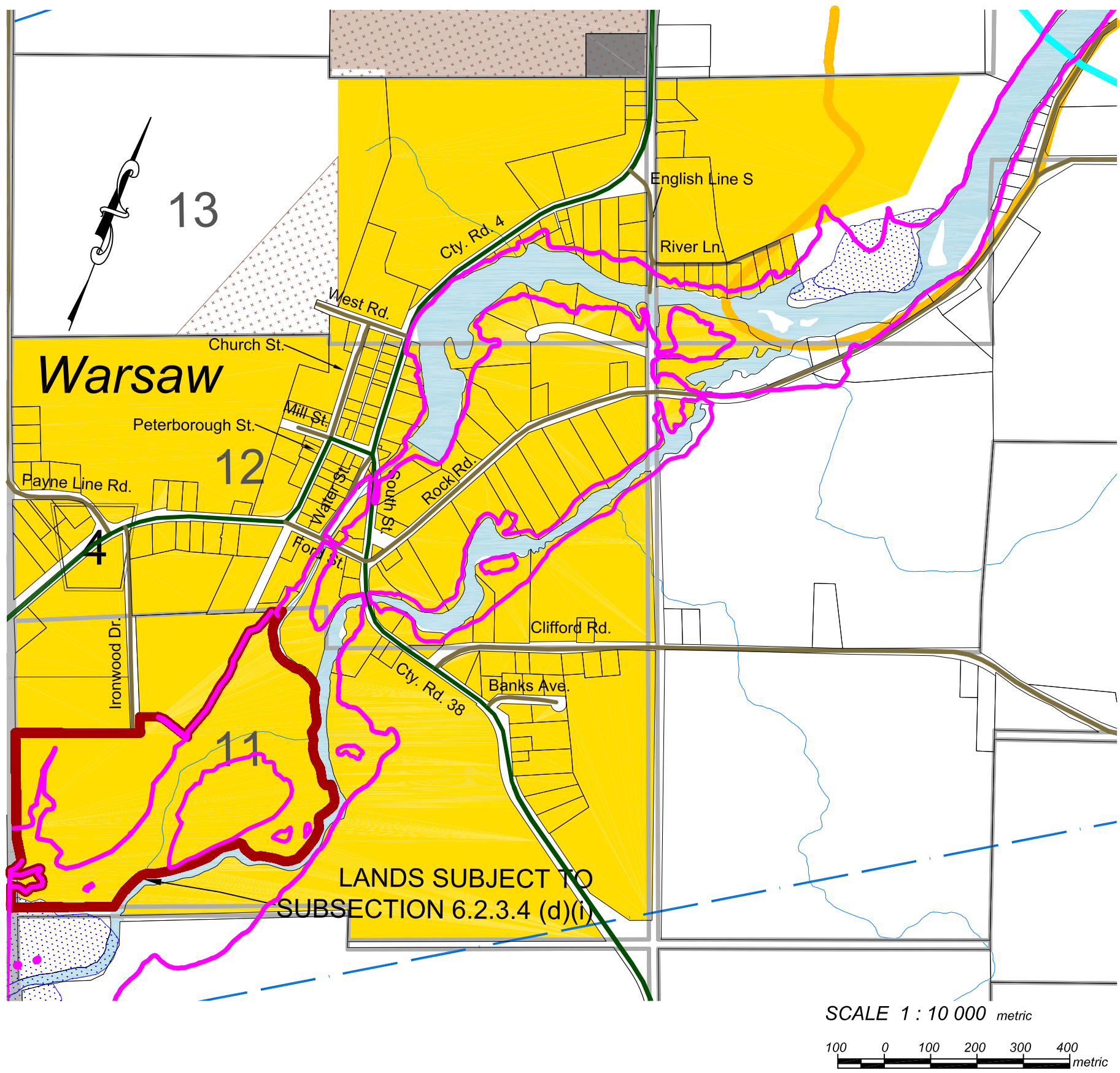


## YOUNG'S POINT



## DONWOOD



## WARSAW

### BASE FEATURES

- Provincially Significant Wetland
- Locally Significant Wetland
- Extractive Industrial
- Highway Commercial
- Recreation Commercial
- Lakeshore Residential
- ANSI Life Science
- Environmental Constraint

- Municipal Boundary
- Ward Boundary
- Provincial Highway
- County Road
- Township Road
- Private Road
- H.E.P.C Tower Lines

### DESIGNATIONS

- Residential
- Seasonal Residential
- Hamlet
- Rural
- Recreational - Open Space
- Commercial
- Extractive Industrial Licenced
- Industrial

SOURCE:  
Produced by the County of Peterborough.  
Draft by County of Peterborough.  
Plot Date: February, 2014

## THE OFFICIAL PLAN OF THE TOWNSHIP OF DOURO-DUMMER

### SCHEDULE 'A4-4' LAND USE YOUNG'S POINT, DONWOOD AND WARSAW

