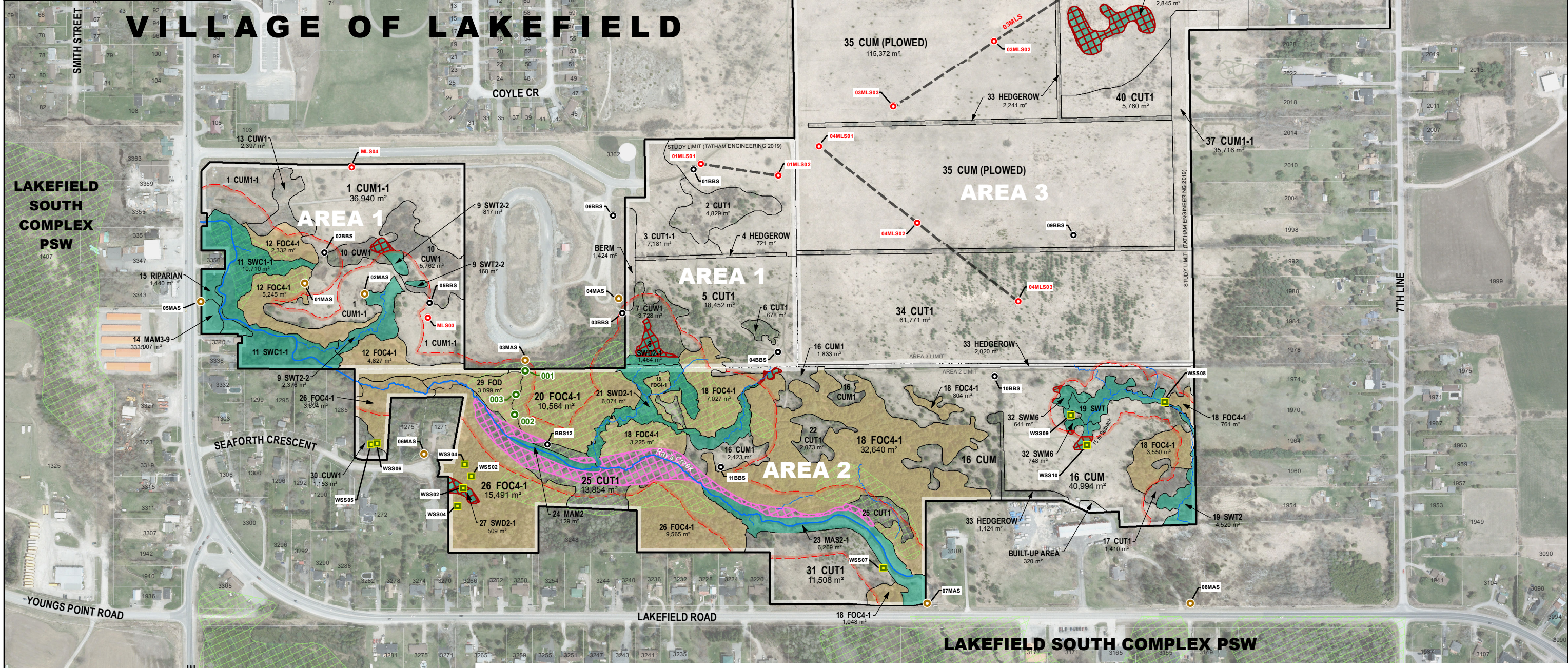


ELC TYPES - 1ST APPROXIMATION
Ecological Land Classification for Southern Ontario: First Approximation and Its Application

ELC CODE	ECOSITE/VEG TYPE DESCRIPTION
CUM	Cultural meadow
CUM1-1	Dry-moist old field meadow
CUT	Cultural thicket
CUT1	Mineral cultural thicket
CUT1-1	Sumac cultural thicket
CUM1	Mineral cultural woodland
FOC2-2	Dry-fresh white cedar coniferous forest
FOC4-1	Fresh-moist white cedar coniferous forest (Type)
FOD	Deciduous forest
FOD4	Dry-fresh deciduous forest
FOD7-2	Fresh-moist ash lowland deciduous forest
MAM2	Mineral meadow marsh
MAS2-1	Cattail mineral shallow marsh
SWC1-1	White cedar mineral coniferous swamp
SWD2-1	Black ash mineral deciduous swamp
SWM6	Birch-poplar organic mixed swamp
SWT2	Mineral thicket swamp
SWT2-2	Willow mineral thicket swamp
SWT2-5	Red-osier mineral thicket swamp



Data Disclaimer
Produced by GHD Limited under Licence with the Ontario Ministry of Natural Resources and Forestry © King's Printer for Ontario, 2022.

Legend

- Butternut Health Assessment
- WWS - Wetland Soil Survey
- BBS - Breeding Bird Survey Station
- MAS - Modified Amphibian Survey Station
- MLS - Eastern Meadowlark/Bobolink Survey Station
- MLS - Eastern Meadowlark/Bobolink Survey Transect
- Setback, Multi-Value (See Report for Details)
- Watercourse, Field Verified (GHD, 2017)
- Study Limit (Tatham Engineering, 2019)
- Wetland, Evaluated-Provincial
- Vegetation Communities
- Wetland Communities
- Forest Communities
- Wetland Compensation
- Wetland to be Removed and Compensated for

1 cm = 46 meters
0 30 60 90 120
Meters

Map Projection: Transverse Mercator
Horizontal Datum: North American 1983
Grid: NAD 1983 UTM Zone 17N
Paper Size ANSI B

Triple T. Holdings Limited
Pt Lot 26, Con 7, Township of Smith
Town of Lakefield
Environmental Impact Study

Project No. 11214535
Revision No.
Date May 10, 2024

Wetland Loss and Compensation

Figure 4

Data source: Image © County of Peterborough, 2018.