



Draft County Official Plan

Virtual Open House
March 24, 2022





Land Acknowledgement

We respectfully acknowledge that Peterborough County is located on the Treaty 20 Michi Saagiig territory and in the traditional territory of the Michi Saagiig and Chippewa Nations, collectively known as the Williams Treaties First Nations which include: Alderville, Beausoleil, Curve Lake, Georgina Island, Hiawatha, Rama and Scugog Island First Nations.

Peterborough County and its local Municipalities respectfully acknowledge that the Williams Treaty First Nations are the stewards and caretakers of these lands and waters in perpetuity and that they continue to maintain this responsibility to ensure their health and integrity for generations to come.



Housekeeping Items

- Remain respectful and courteous to staff and other attendees throughout the duration of the Open House
- Mute your microphone unless asking a question
- Questions should be held until the end of the presentation at which time you may raise your hand (either on camera or virtually by clicking 'Raise Hand' 🙋 in the webinar controls)
- Conversations are intended to be a high-level review of policy and direction. If you have a site-specific question about an individual property, you are encouraged to contact County or Township staff for a one-on-one conversation.



Connect with us!

Comments and questions can be submitted:

- Via email: NewCountyOP@ptbocounty.ca
- Mail or drop-off to:



County of Peterborough
470 Water Street
Peterborough, ON
K9H 3M3



Open Houses

All Open Houses

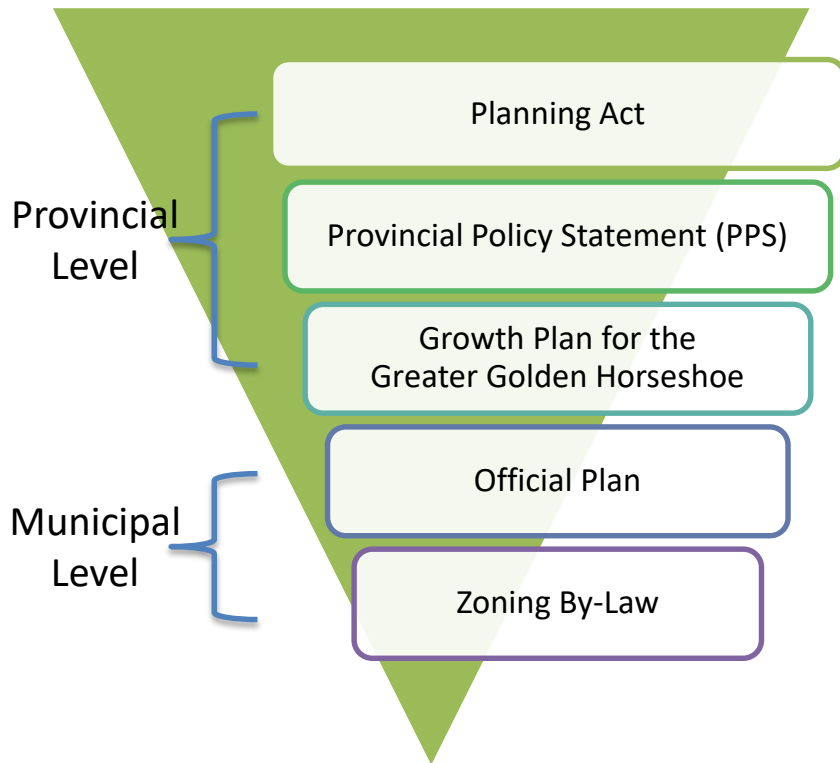
- **March 17** - Planning Administration Tools, Development Applications, Land Use Designations – recording available online
- **March 24** - Natural Heritage System, Natural Heritage Features (including wetlands, wildlife habitat), Natural Hazards, Oak Ridges Moraine
- **March 31** - Aggregates, Water Resources (including 30m water setback, lakes at capacity), Transportation and Infrastructure
- **April 7** - Growth Management (including results and recommendations of County's Growth Analysis and Land Needs Assessment)



Outline

- Background
- Overview of Draft Official Plan
 - » Natural Heritage System Approach and Overlay
 - » Natural Heritage Features
 - » Natural Hazards
 - » Oak Ridges Moraine
- Next Steps

Background

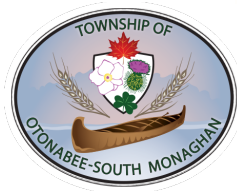


- An Official Plan is a document that is legally required under the Planning Act
- It establishes our community's growth and development goals, objectives and policies for the next 30 years
- Must conform to and be consistent with the Provincial legislation
- Official Plans are required to be reviewed periodically and must be updated to reflect any changes to Provincial planning documents



Overview of Draft Official Plan (OP)

- Serves as Municipal Comprehensive Review (MCR) as required under the Planning Act
- Also serves as a conformity exercise, bringing the Official Plan up-to-date with policies of current Growth Plan and Provincial Policy Statement
- The Draft OP provides policy for both the County and detailed land use policy for seven local Townships



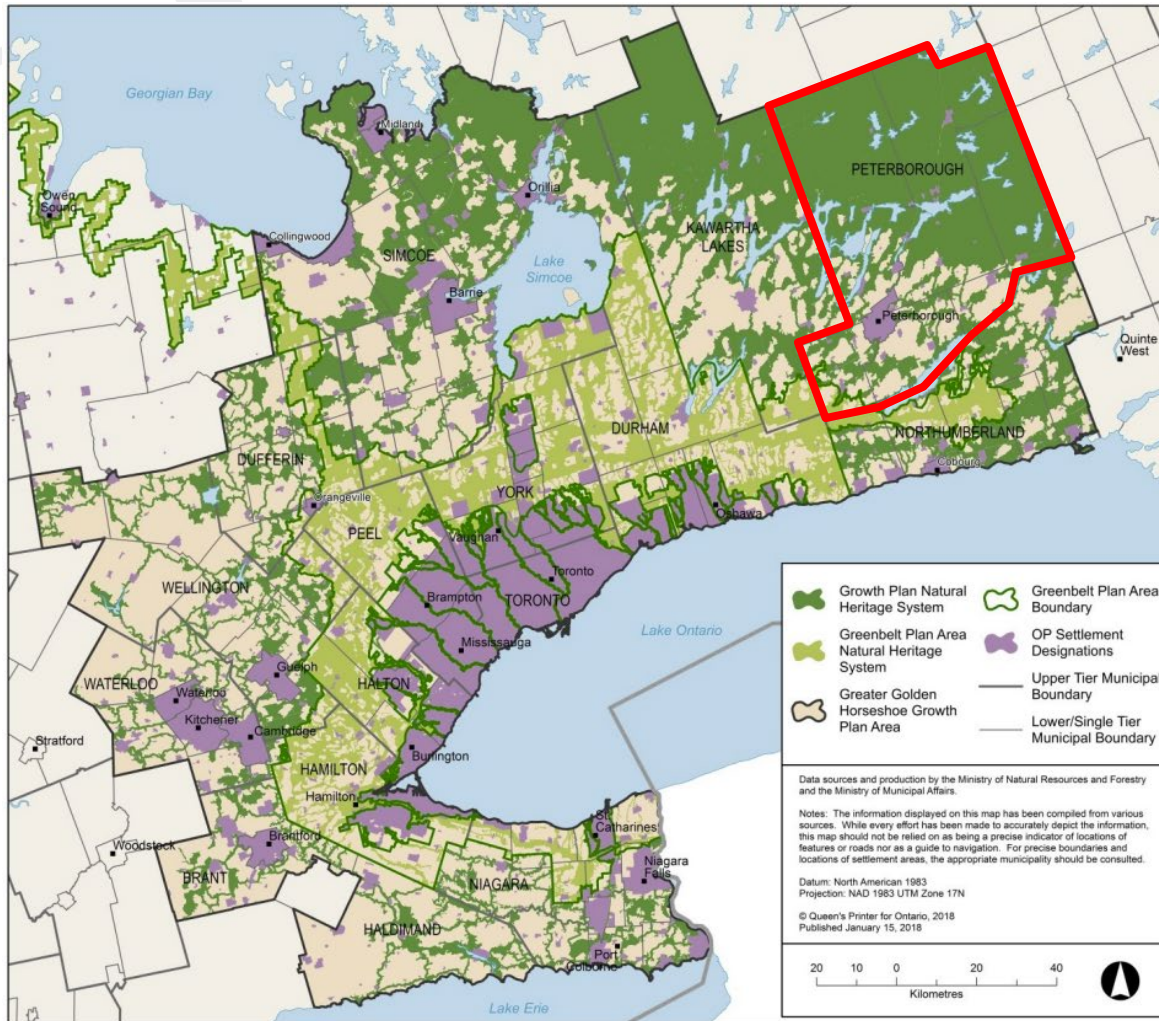


Overview of Draft Official Plan (OP)

Natural Heritage System Approach and Overlay

- Province has mapped a Natural Heritage System (NHS) that is required by the Growth Plan to be incorporated into the County's Official Plan as an overlay
- NHS does not apply until it is implemented through the County OP
- Opportunity to refine the NHS at the time of initial implementation, and only through Municipal Comprehensive Review in the future
- Intended to provide a long-term approach for the protection of natural heritage and biodiversity in the Greater Golden Horseshoe

Provincial NHS



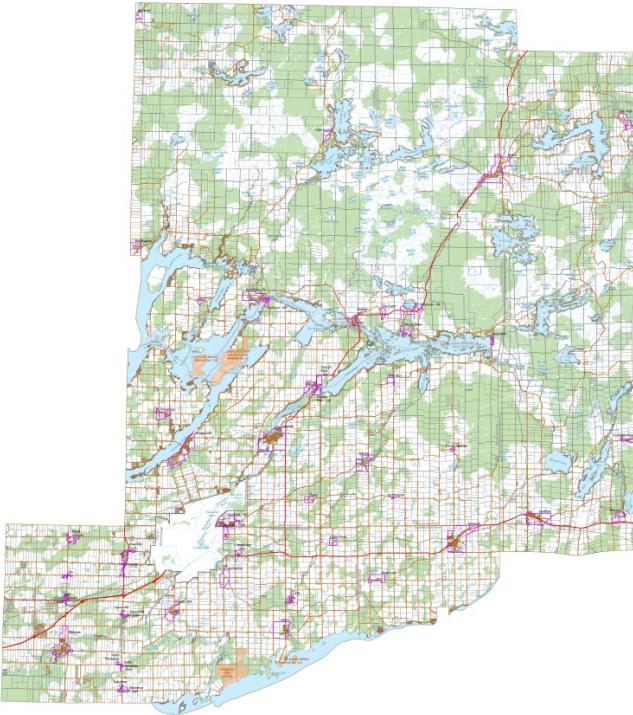
PLACES TO GROW

GROWTH PLAN FOR THE
GREATER GOLDEN HORSESHOE, 2017

Regional Natural Heritage System

Note: The information displayed on this map is not to scale, does not accurately reflect approved land-use and planning boundaries, and may be out of date. For more information on precise boundaries, the appropriate municipality should be consulted. For more information on Greenbelt Area boundaries, the Greenbelt Plan should be consulted. The Province of Ontario assumes no responsibility or liability for any consequences of any use made of this map.

Overview of Draft Official Plan (OP)



Proposed NHS Refinement

- County proposes to use Natural Heritage System mapping developed through the Kawarthas, Naturally Connected (KNC) project
- Developed locally and involved all Municipalities, First Nations, Provincial staff, stakeholder groups
- Proposal to use KNC mapping was not supported by Province
- County continues to work with local Municipalities and Province to make further refinements
 - » Likely that the solution will be a hybrid of both the KNC mapping and Provincial mapping

Overview of Draft Official Plan (OP)

Effect of NHS

- Will not extend into any identified settlement areas
- New development in the NHS will be required to address an additional list of criteria
- Additional protection for natural heritage features such as wetlands, significant woodlands, fish habitat, habitat of endangered and threatened species in the NHS
 - » New development not permitted in these areas or within the vegetation protection zone (VPZ)



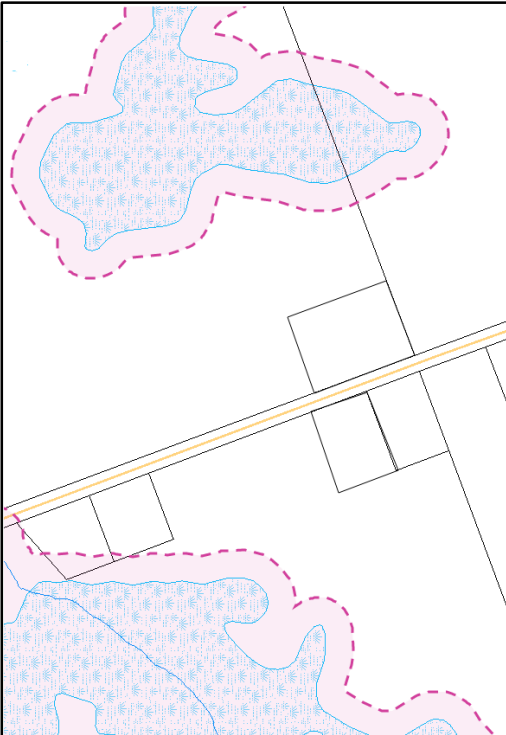


Overview of Draft Official Plan (OP)

Natural Heritage Features

- Key natural heritage features are defined by the Growth Plan – broader definition than language used in the Provincial Policy Statement (PPS)
- Each feature is defined in the OP, and policies applied depending on whether it is in/out of the Natural Heritage System
 - » Features inside of the NHS – Growth Plan policies apply
 - » Features outside of the NHS – PPS policies apply to significant features
 - » Features inside of settlement areas – PPS policies apply to significant features
- Wetlands are the exception because they are both a key natural heritage feature and a key hydrologic feature as defined by the Growth Plan
 - » Growth Plan policies more restrictive for key hydrologic features because they apply regardless as to whether the feature is inside or outside the NHS
 - » All wetlands afforded same level of protection outside of settlement areas

Overview of Draft Official Plan (OP)



Natural Heritage Features

- Generally, inside the NHS overlay, development is not permitted within natural heritage features or their Vegetation Protection Zones (VPZ), studies are required when development is within 120m of a feature
- Appendix G to the draft OP provides recommended minimum VPZ
- Policies provide minimum requirements to be addressed in environmental studies
 - » Studies are reviewed by the Conservation Authority having jurisdiction or a peer review consultant working on behalf of the County or Township
 - » Recommendations of the studies can be implemented through agreements registered on title or through the use of planning tools such as zoning or site plan control

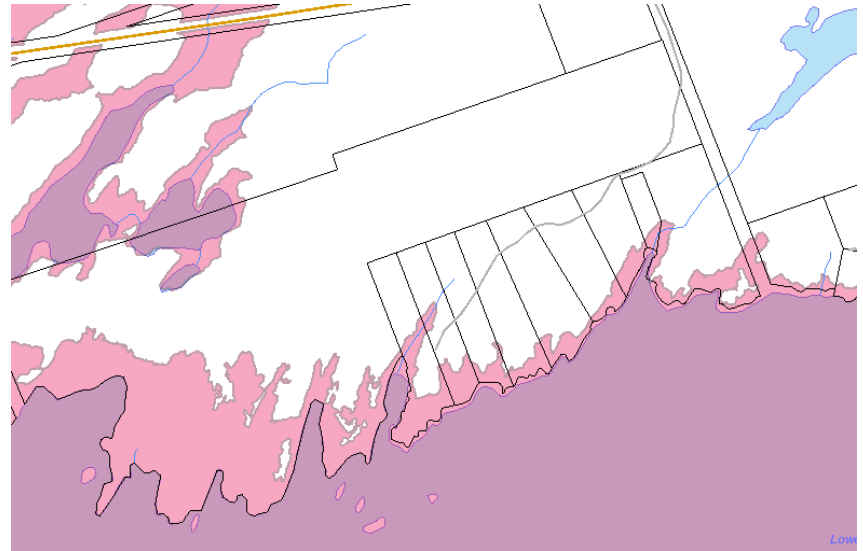
- Naturally occurring processes that have potential to render lands unsafe for development
- Development directed away from these areas in accordance with PPS
- Includes lands prone to flooding, erosion and wildfire hazards
- Wildfire hazard mapping is new to the County, provided by the Province

-

Overview of Draft Official Plan (OP)

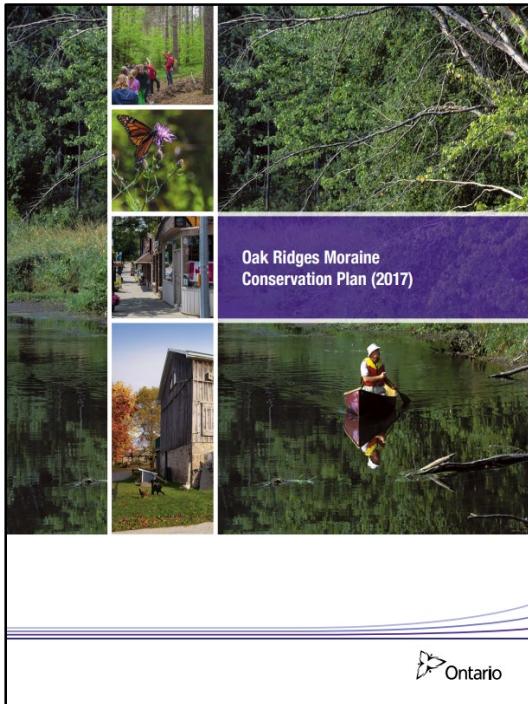
Natural Hazards

- Floodplains have been delineated around several major lakes and waterways by Conservation Authorities
- Development not permitted in the floodplain or where lands would be inaccessible during times of flooding
- Project currently underway to delineate floodplain for:
 - » Meade Creek (impacting portions of DD and OSM)
 - » Lakefield Tributaries
 - » Ouse River in Norwood
 - » Jackson Creek (impacting portions of CM and SEL)
 - » Baxter Creek (impacting portions of CM)
 - » Curtis Creek (revised mapping, impacting DD)



Visit:
<https://www.otonabeeconservation.com>

Overview of Draft Official Plan (OP)



Oak Ridges Moraine (ORM)

- ORM is an ecologically important landform that stretches from Caledon to Rice Lake, and within the County is only found in the Township of Cavan Monaghan
- County's OP must include policy that conforms with the Provincial Oak Ridges Moraine Conservation Plan
 - » ORMCP more prescriptive than other Provincial planning documents, setting out specific land use designations, development policies
 - » Aligns with Growth Plan for key natural heritage and key hydrologic features
- Development on the Moraine is generally more limited and may be subject to additional study
- ORM policies currently found throughout the Plan for development in Cavan Monaghan
 - » Recognize need to update these policies and provide a broader context, similar to the approach taken in the County's current OP



Resources

Additional resources and background information can be found on the County's website:

www.ptbocounty.ca/NewCountyOP



Full Draft Official Plan



Land Use Schedules



Focus Reports to Council (theme based)



Provincial information and guidelines for
Agricultural System and Natural Heritage
System

Next Steps



Additional Open Houses

March 31 - Aggregates, Water Resources, Transportation and Infrastructure

April 7 - Growth Management



Release of Revised Draft Official Plan

Updated to reflect comments received as part of consultation process



Public Meeting

To be hosted by County Council (not yet scheduled)



Thank You for Attending!

If you wish to be notified of future meetings or release of revised draft, please ask to be added to the notification list:

- Via email: NewCountyOP@ptbocounty.ca
- Mail or drop-off to:

County of Peterborough
470 Water Street
Peterborough, ON
K9H 3M3

