

Public Information Centre For County Road 18 Intersection Enhancements at Fifth Line

Please record your thoughts as you review the materials. Peterborough County and Wills staff will review your comments and compile all questions including responses. Contact information is provided at the end of the presentation.



Project Overview

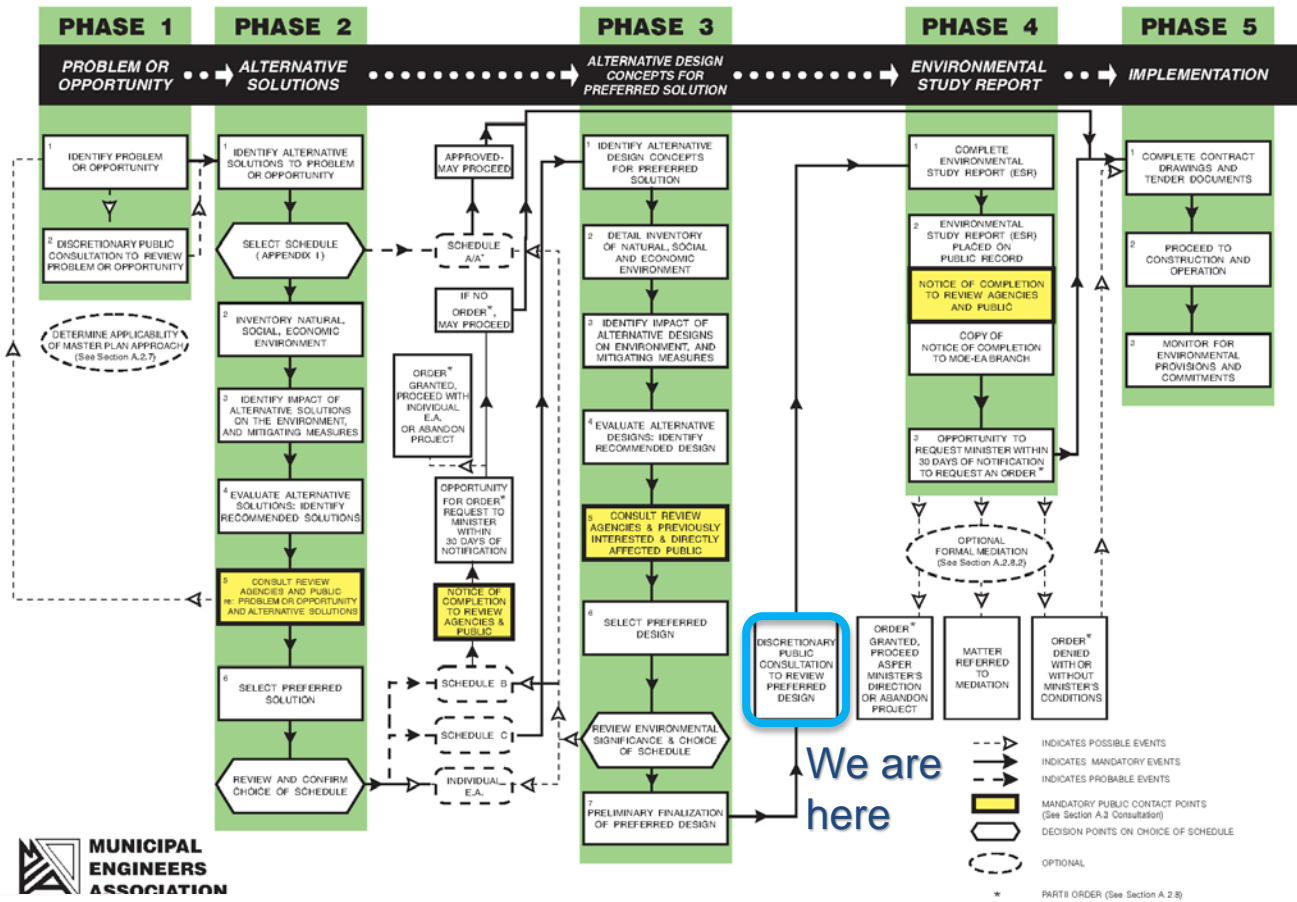
The County of Peterborough (County) together with their Consultant, D. M. Wills Associates Ltd. (Wills), is undertaking the design of intersection enhancements at County Road 18 (Chemong Road) and Fifth Line. Enhancements are to include the addition of a southbound left turn lane on County Rd 18.



Project Process

EXHIBIT A.2 MUNICIPAL CLASS EA PLANNING AND DESIGN PROCESS

NOTE: This flow chart is to be read in conjunction with Part A of the Municipal Class EA



This project is being conducted in accordance with the requirements of a Schedule A+ of the Municipal Engineers Association (MEA) document, Municipal Class Environmental Assessment, October 2000, as amended in 2007.



Traffic Signal Assessment

- The County's Transportation Master Plan (TMP) Update (March 2014) assessed this intersection for operational improvements and at the time of the update no significant recommendations for improvement were made and it was not included in the short term (0-10 year) forecast.
- As the 10 year forecast approaches Wills reviewed available traffic and collision data to assess Traffic Signal warrants at the intersection
- The assessment concluded that signals are not warranted for the current year (2021)
- Traffic Signals will be warranted in the 10-15 forecast (by 2036)
- The TMP update identified substantial road improvements for Chemong Road, including this intersection in the 10-20 year forecast (by 2034).



Design Considerations

Three alternatives were considered to accommodate the addition of a south-bound left turn lane:

- Widen the road platform to the West
- Widen the road platform to the East
- Widen on both sides

To evaluate these designs the following factors were considered:

- Highway Geometrics (present and future conditions)
- Traffic Operations and Safety
- Constructability and Cost
- Environmental Impacts (Terrestrial Habitat, Species at Risk)
- Community Stakeholders (Nearby Residents, Local First Nations)

After analyzing the different design options it was determined that the best solution was to widen the width of the turn lane to the west.



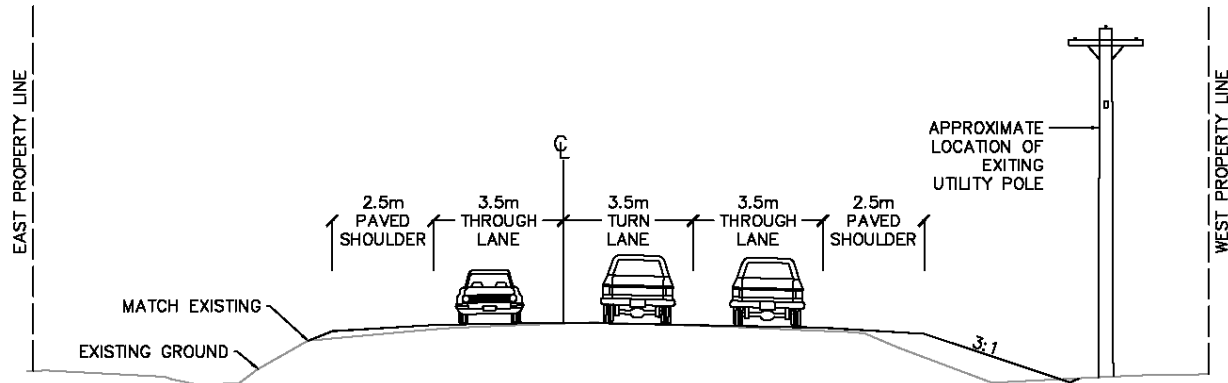
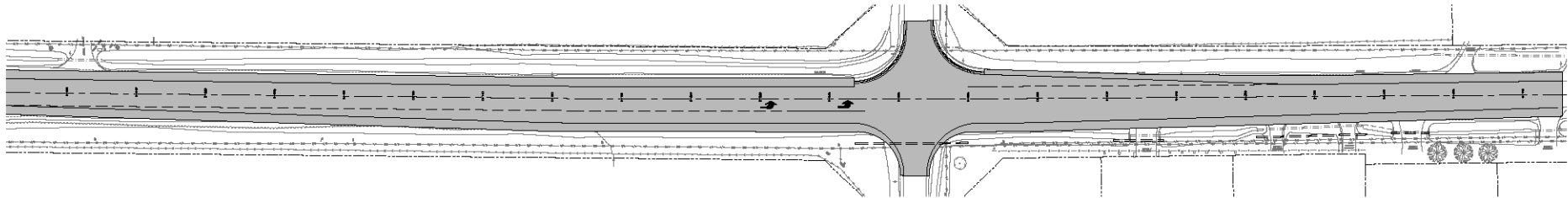
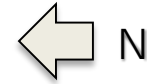
Design Considerations (continued)

- An investigation of the existing environmental conditions and environmental impact of the project was performed. All impact mitigating measures recommended by the report will be followed.
- Local First Nations were consulted at the onset of the project, Curve Lake First Nations participated in the Archeological Assessment.
- Letourneau heritage Consulting Inc. completed a Stage 1 & 2 Archeological Assessment. No concerns were noted and the assessment has been entered into the Ontario Public Register of Archeological Reports.

Preferred Alternative – Widen to the West

County Road 18 (Chemong Road)

Fifth Line



Next Steps

- Compile and review comments
 - Consider feedback and provide responses
- Complete final design
- Construction (summer 2022)

Thank you for your Feedback!

- Contact information

County of Peterborough

Doug Saccoccia, P.Eng.
Manager, Engineering & Design

dsaccoccia@ptbocounty.ca

705-775-2737 ext 3201

D.M. Wills Associates Ltd.

Mark Spiers, C. Tech,
Municipal Project Manager

mspiers@dmwills.com

705-742-2297 ext 227

- Commenting deadline September 10, 2021.

