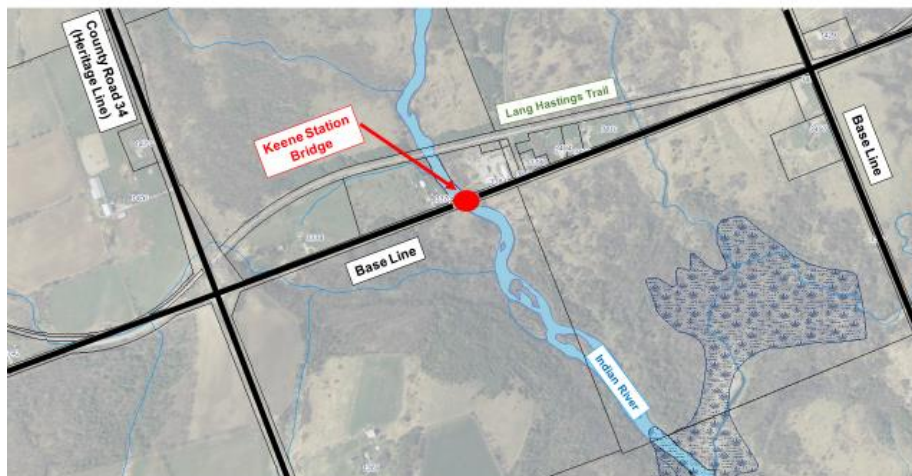


The County of Peterborough has retained HP Engineering Inc. to complete preliminary and detail design activities and to undertake the Municipal Class Environmental Assessment (MCEA) process for the replacement / rehabilitation of the Keene Station Bridge. The Keene Station Bridge is located on Base Line Road approximately 0.5 km east of County Road 34 (Heritage Line) within the Township of Otonabee South Monaghan. The location is shown on the provided key map.



The project is being initiated as a Schedule 'A+' undertaking in accordance with the MCEA, which applies to municipal infrastructure projects including roads, bridges, water, and wastewater projects.

Public and agency consultation is an important component of the Environmental Assessment process. A Public Information Centre (PIC) will be held on **Tuesday September 18th, 2018 from 5:00 pm to 7:00 pm at the Peterborough County Agricultural Building (located at the back of Lang Pioneer Village Museum), 146 Lang Road Keene, Ontario** to provide information and answer questions regarding the project. The PIC will consist of a drop-in type format with displays showing alternate solutions and the preferred solution.

Staff from the County and Project Lead Consultant will be on hand to answer any questions. Subject to comments received and the receipt of necessary approvals, the County of Peterborough intends to proceed with the planning, design and construction of this project.

If you are interested in providing comments or receiving further information on this project, please contact the following individuals:

Tashi Dwivedi, P.Eng.

Principle
HP Engineering Inc.
Suite 400, 2039 Robertson Road
Ottawa, ON K2H 8R2
Phone: (613) 695-3737
Fax: (613) 680-3636
Email: tashi.dwivedi@hpengineering.ca

Ms. Kendra Reid, C.E.T.

Sr. Engineering Technologist, Engineering & Design
County of Peterborough Public Works
310 Armour Road
Peterborough, ON K9H 1Y6
Phone: (705) 775-2737 x 3202
Fax: (705) 749-2551
Email: kreid@ptbocounty.ca

Comments and information regarding this study are being collected to assist in meeting the requirements of the *Environmental Assessment Act*. These comments will be maintained on file for use during the study in accordance with the *Freedom of Information and Protection of Privacy Act*. All comments, with the exception of personal information, will become part of the public record. If you have any accommodation requirements in order to participate in this project please contact one of the project team members listed above.